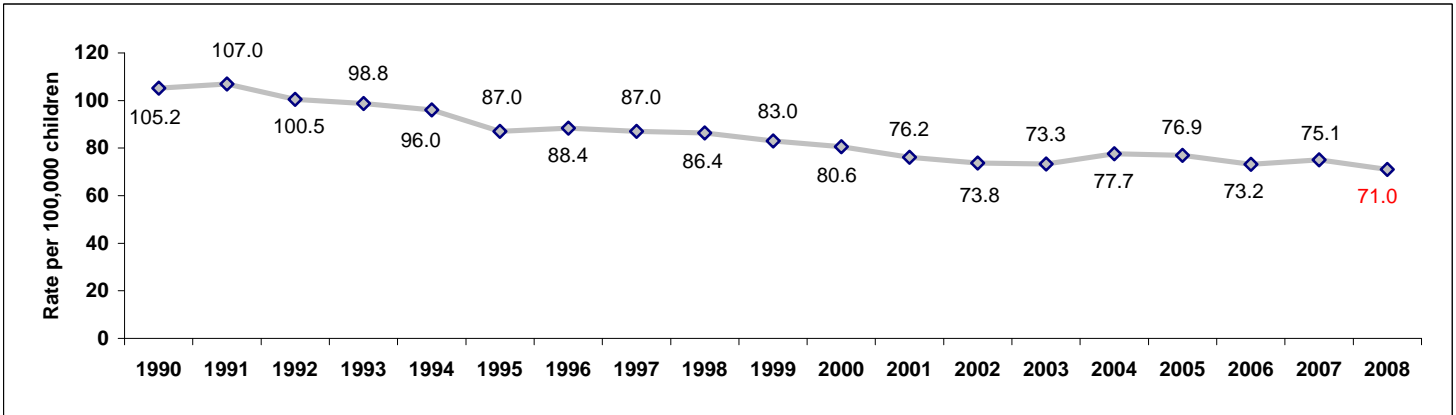


# 2008 CHILD DEATHS IN NORTH CAROLINA

Trend in Rate of Child Deaths 1990-2008\*  
Ages Birth through 17 Years



## Child Deaths by Cause in North Carolina Ages Birth through 17 Years

Cause of Death	Average Annual Number 2004-2008	Number in 2007	Number in 2008	Percent Rate Change 2007-2008
Birth defects	218	231	232	0%
Other birth-related conditions	564	580	528	-9%
Sudden infant death syndrome	107	98	136	39%
Illnesses	302	329	297	-10%
Unintentional injuries	275	271	248	-8%
<i>Motor vehicle injuries</i>	155	142	123	-13%
<i>Bicycle injuries</i>	5	4	3	-25%
<i>Injuries caused by fire</i>	18	24	17	-29%
<i>Drowning</i>	23	26	30	15%
<i>Falls</i>	3	2	2	0%
<i>Poisoning</i>	17	17	18	6%
<i>Other unintentional injuries</i>	55	56	55	-2%
Homicide	63	61	58	-5%
Suicide	25	26	22	-15%
All other	50	53	52	-2%
<b>TOTAL</b>	<b>1,603</b>	<b>1,649</b>	<b>1,573</b>	<b>-5%</b>

## Child Deaths by Age

Age Group	Average 2004-2008	Number in 2007	Number in 2008	Percentage change 2007-2008
Infant	1,067	1,107	1,066	-3.7%
1-4	142	144	146	1.4%
5-9	94	106	89	-16.0%
10-14	108	115	90	-21.7%
15-17	192	177	182	2.8%

## NC POPULATION

Year	Total	Under 18
2007	9,069,398	2,194,806
2008	9,227,016	2,216,438
Percent Change	1.7%	1.0%

Data reflect state residents.

Please see Technical Notes at <http://www.schs.state.nc.us/SCHS/deaths/child/cftechnote2008.pdf>

\* Child death rates for 1990-1999 are not the same as published in some previous reports due to revised population estimates.

Produced by the N.C. Division of Public Health - Women's and Children's Health Section in conjunction with the State Center for Health Statistics.

