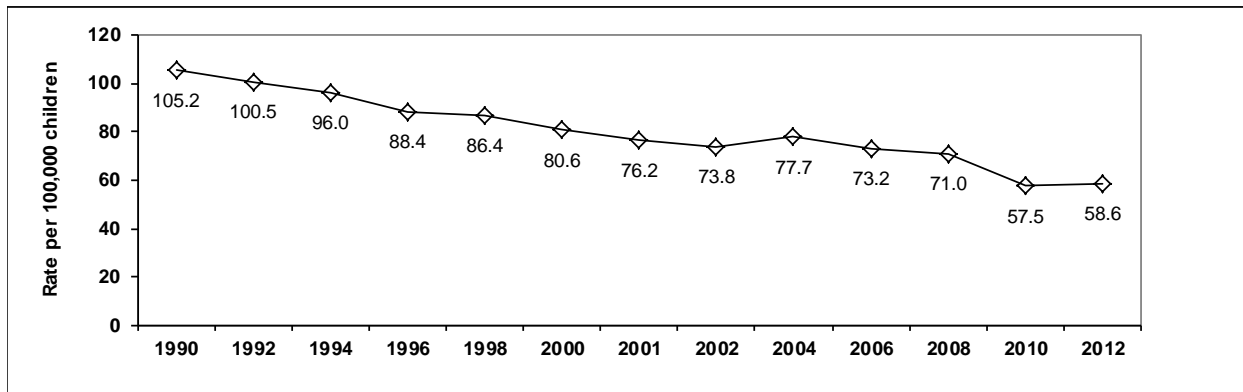


2012 CHILD DEATHS IN NORTH CAROLINA
Trend in Rate of Child Deaths 1991-2012*
Ages Birth through 17 Years



Child Deaths by Cause in North Carolina
Ages Birth through 17 Years

Cause of Death	Average Annual Number 2008-2012	Number in 2011	Number in 2012	Percent Change 2011-2012
Birth defects	211	197	206	4.6%
Other birth-related conditions	477	458	437	-4.6%
Sudden infant death syndrome	73	50	28	-44.0%
Illnesses	275	248	254	2.4%
Unintentional injuries	213	202	216	6.9%
<i>Motor vehicle injuries</i>	109	98	108	10.2%
<i>Bicycle injuries</i>	2	2	2	**
<i>Injuries caused by fire</i>	9	7	8	**
<i>Drowning</i>	29	20	29	45.0%
<i>Falls</i>	3	1	6	**
<i>Poisoning</i>	14	16	13	-18.8%
<i>Other unintentional injuries</i>	47	58	50	-13.8%
Homicide	45	43	47	9.3%
Suicide	28	23	35	52.2%
All other	83	91	116	27.5%
TOTAL	1,405	1,312	1,339	2.1%

Child Deaths by Age				
Age Group	Average 2008-2012	Number in 2011	Number in 2012	Percent Change 2011-2012
Infant	935	866	883	2.0%
1-4	140	122	132	8.2%
5-9	80	84	77	-8.3%
10-14	92	95	103	8.4%
15-17	157	145	144	-0.7%

NC POPULATION***		
Year	Total	Under 18
2011	9,651,103	2,283,980
2012	9,752,073	2,286,528
Percent Change	1.0%	0.1%

Data reflect state residents.

Please see Technical Notes at <http://www.schs.state.nc.us/SCHS/deaths/child/cftechnote2012.pdf>

* Child death rates for 1990-1999 are not the same as published in some previous reports due to revised population estimates.

** Percent change is not calculated because the numbers are too small, and are subject to random variation over time.

***Population estimates are derived from the Vintage 2012 bridged-race postcensal population estimates files.

Population estimates presented here may differ from earlier reports due to updated population estimates.