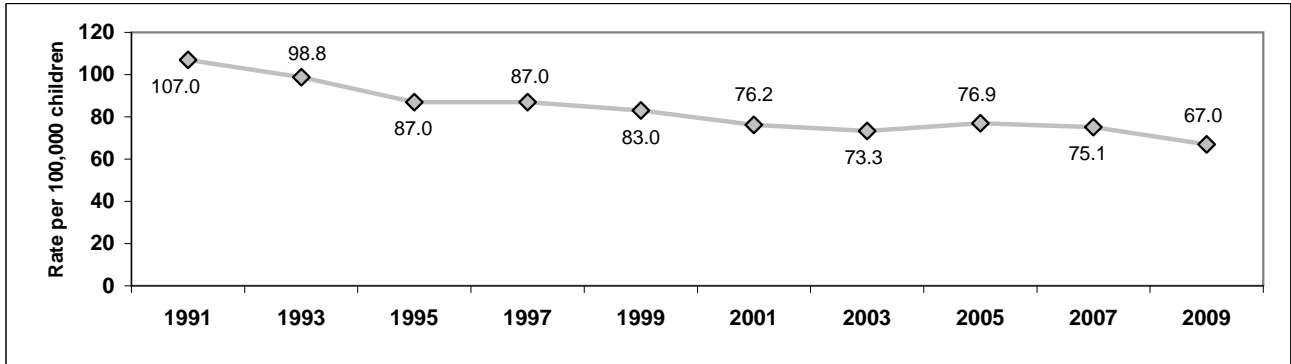


## 2009 CHILD DEATHS IN NORTH CAROLINA

### Trend in Rate of Child Deaths 1991-2009\* Ages Birth through 17 Years



### Child Deaths by Cause in North Carolina Ages Birth through 17 Years

Cause of Death	Average Annual Number 2005-2009	Number in 2008	Number in 2009	Percent Change 2008-2009
Birth defects	219	232	224	-3.4%
Other birth-related conditions	555	528	531	0.6%
Sudden infant death syndrome	106	136	98	-27.9%
Illnesses	300	297	278	-6.4%
Unintentional injuries	254	248	206	-16.9%
<i>Motor vehicle injuries</i>	139	123	114	-7.3%
<i>Bicycle injuries</i>	4	3	1	**
<i>Injuries caused by fire</i>	15	17	8	-52.9%
<i>Drowning</i>	26	30	28	-6.7%
<i>Falls</i>	3	2	5	**
<i>Poisoning</i>	16	18	15	-16.7%
<i>Other unintentional injuries</i>	50	55	35	-36.4%
Homicide	60	58	36	-37.9%
Suicide	27	22	35	59.1%
All other	58	52	78	50.0%
<b>TOTAL</b>	<b>1,579</b>	<b>1,573</b>	<b>1,486</b>	<b>-5.5%</b>

#### Child Deaths by Age

Age Group	Average 2005-2009	Number in 2008	Number in 2009	Change 2008-2009
Infant	1,058	1,066	1,006	-5.6%
1-4	144	146	148	1.4%
5-9	93	89	84	-5.6%
10-14	101	90	84	-6.7%
15-17	183	182	164	-9.9%

#### NC POPULATION

Year	Total	Under 18
2008	9,227,016	2,217,020
2009	9,382,609	2,216,736
Percent Change	1.7%	0.0%

Data reflect state residents.

Please see Technical Notes at <http://www.schs.state.nc.us/SCHS/deaths/child/cftechnote2009.pdf>

\* Child death rates for 1990-1999 are not the same as published in some previous reports due to revised population estimates.

\*\* Percent change is not calculated because the numbers are too small, and are subject to random variation over time.

Produced by the N.C. Division of Public Health - Women's and Children's Health Section in conjunction with the State Center for Health Statistics

---

CS.