

# Joint Legislative Education Oversight Committee

## Update on Competency Based Education

*Andrew J. Smith Ed.D., Assistant Superintendent  
NC DPI - Office of Innovation*

# Introduction

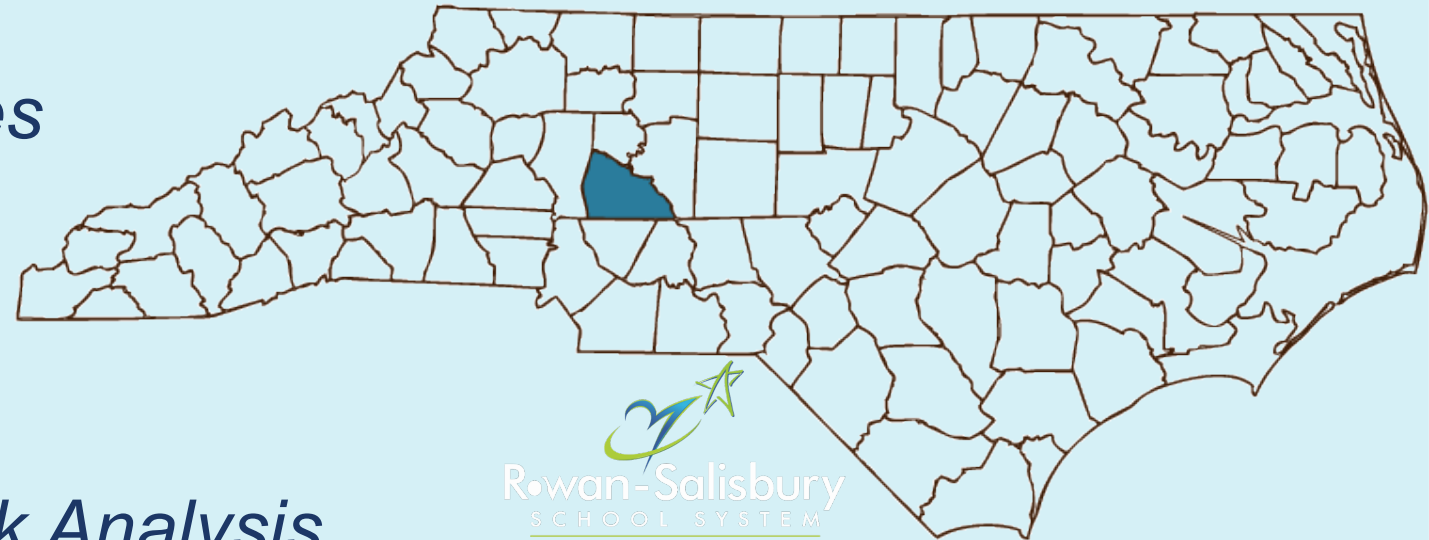
Previous Experience with:

*1:1 Technology Initiative & Educational Technology*

*Innovative Learning Practices*

*Renewal School District*

*Contingency Planning & Risk Analysis*



# Office of Innovation

*Innovative  
Practices &  
Programs*

*Charter  
Schools*

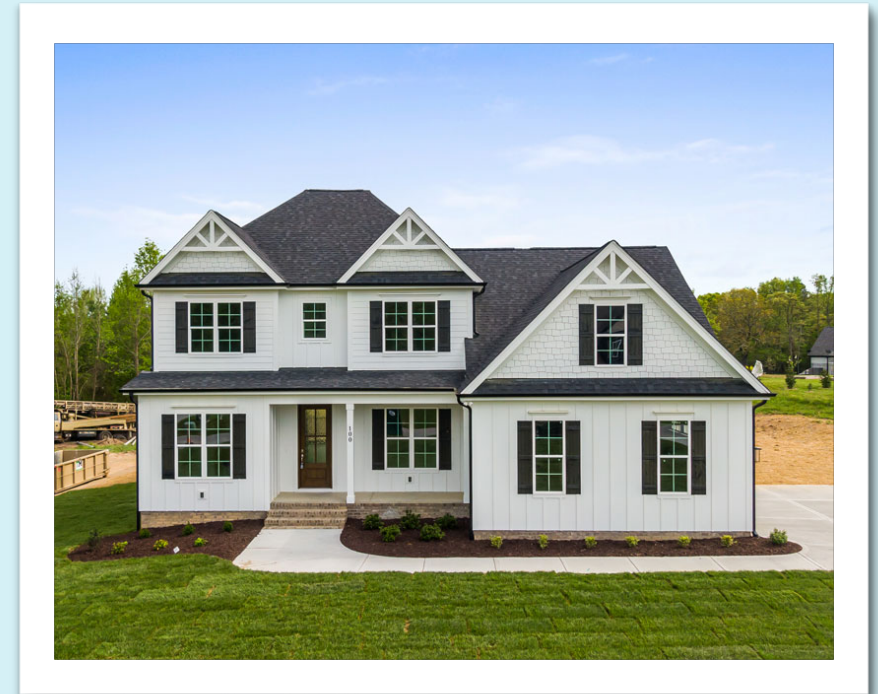
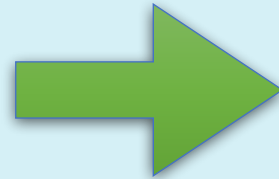
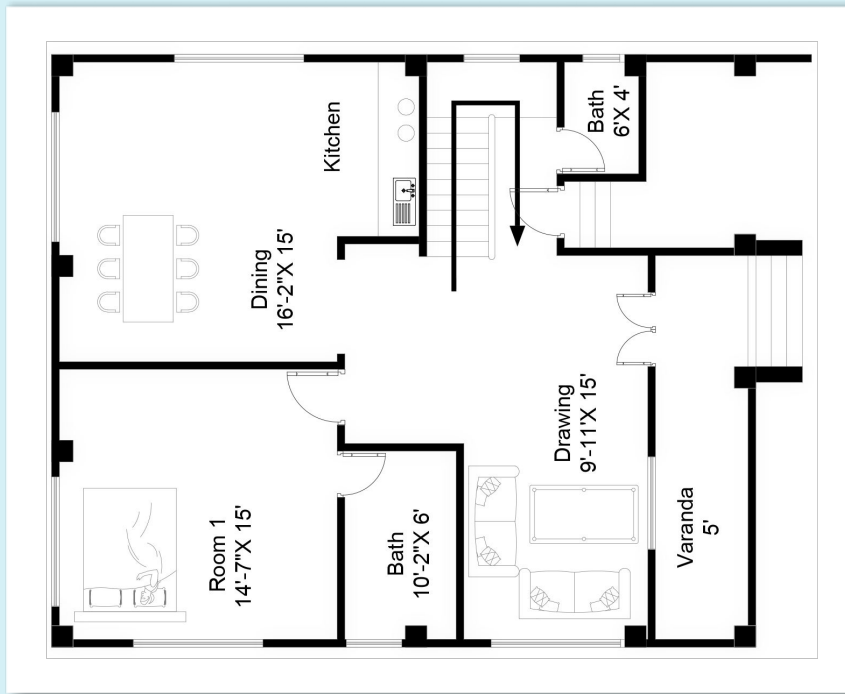
*Research &  
Evaluation*

*Learning  
Recovery &  
Acceleration*

# What is Competency Based Education?


*As a personalized learning approach, CBE provides a **flexible** and engaging learning environment in which progression is based on **mastery** of explicit learning objectives, or competencies, as **demonstrated through evidence of student learning**, rather than the **time spent** in a course/topic.*

*~ Regional Educational Laboratory Program Southeast*



# What is Competency Based Education?

**ROWAN-SALISBURY SCHOOL SYSTEM**  
Kindergarten Report Card

  
Rowan-Salisbury  
SCHOOL SYSTEM  
Competency Based Learning

Student \_\_\_\_\_ School **Bostian** School Year **2021/2022**  
Teacher \_\_\_\_\_ Principal **Mr. Stirewalt**

ATTENDANCE	1 <sup>st</sup>	2 <sup>nd</sup>	3 <sup>rd</sup>	4 <sup>th</sup>	TOTAL
Days Absent					
Days Tardy					

**PLACEMENT**  
 Promoted to grade **1**  
 Retained in grade \_\_\_\_\_

**EXPLANATION OF GRADES FOR READING, MATHEMATICS, SOCIAL STUDIES, & SCIENCE**  
 4 Exceeds grade level expectations.  
 3 Proficient – meets grade level expectations.  
 2 Not yet proficient – sometimes meets grade level expectations.  
 1 Limited performance – not yet meeting expectations.  
 □ Blank if Not Assessed This Quarter

(Students not reading at grade level or at risk of not reading at grade level are in danger of non-promotion.)

See teacher comments below for information about your child's academic strengths and areas of need.

	1 <sup>st</sup>	2 <sup>nd</sup>	3 <sup>rd</sup>	4 <sup>th</sup>		1 <sup>st</sup>	2 <sup>nd</sup>	3 <sup>rd</sup>	4 <sup>th</sup>
<b>OVERALL ENGLISH/LANGUAGE ARTS PROFICIENCY</b>	<b>3</b>	<b>3</b>	<b>3</b>	<b>3</b>	<b>OVERALL SOCIAL STUDIES PROFICIENCY</b>	<b>3</b>	<b>3</b>	<b>3</b>	<b>3</b>
Reading: Literature	3	3	3	4	History	3	3	3	3
Reading: Informational Text	3	3	3	4	Geography / Environmental Literacy	3	3	3	3
Reading: Foundational Skills	3	3	3	3	Economics / Financial Literacy	3	3		
Writing	3	3	3	3	Civics and Governance	3			
Speaking and Listening	3	3	3	3	Culture			3	
Language	3	3	3	3					
<b>OVERALL MATHEMATICS PROFICIENCY</b>	<b>3</b>	<b>3</b>	<b>3</b>	<b>3</b>	<b>OVERALL SCIENCE PROFICIENCY</b>	<b>3</b>	<b>3</b>	<b>3</b>	<b>3</b>
Counting and Cardinality	3	3	3	3	Life Science				3
Operations and Algebraic Thinking			3	3	Physical Science	3	3		
Numbers and Operations in Base Ten			3	3	Earth Science	3	3	3	
Measurement and Data	3								
Geometry		3							

**SOCIAL DEVELOPMENT and WORK HABITS**      S = Satisfactory    N = Needs Improvement    U = Unsatisfactory

	1 <sup>st</sup>	2 <sup>nd</sup>	3 <sup>rd</sup>	4 <sup>th</sup>		1 <sup>st</sup>	2 <sup>nd</sup>	3 <sup>rd</sup>	4 <sup>th</sup>
Follows classroom and school rules.	S	S	S	S	Participates and works cooperatively with others.	S	S	S	S
Shows respect for self, others, and property.	S	S	S	S	Works carefully and neatly.	S	S	S	S
Pays attention in class; follows oral and written directions.	S	S	S	S	Completes class assignments on time.	S	S	S	S
Thinks and works independently.	S	S	S	S					

**TEACHER COMMENTS:**

	1 <sup>st</sup>	2 <sup>nd</sup>	3 <sup>rd</sup>	4 <sup>th</sup>
<b>OVERALL ENGLISH/LANGUAGE ARTS PROFICIENCY</b>	<b>3</b>	<b>3</b>	<b>3</b>	<b>3</b>
Reading: Literature	3	3	3	4
Reading: Informational Text	3	3	3	4
Reading: Foundational Skills	3	3	3	3
Writing	3	3	3	3
Speaking and Listening	3	3	3	3
Language	3	3	3	3

# What is Competency Based Education?

## Quarter Progress Report

Student:

Grade: 7

Class	Teacher	Grade	%	Q1 Abs	Q1 Tar	Teacher comment
MS Social Studies		D	67	3	2	Many missing assignments, please turn them in. Late is better than never!
MS Language Arts		F	59	5	0	Close to passing, please complete your journal entries.
MS Math		B	82	4	0	Showing good academic progress. Uses class time wisely. Participates in class.
MS Physical Education		F	57	3	1	Grade can still be raised. Comes unprepared for class. Does not dress for P.E.
MS Science		B	83	3	1	Keep up the good work. Extra credit options available.
MS Exploring Woodworking		D	66	4	3	First project has not been completed yet, please finish ASAP.
MS Keyboarding		B	85	0	0	Words per minute (WPM) baseline has been set, we have set goals in class for each student to raise theirs by 10 this quarter.
MS Technology		A	95	0	0	Student is a natural using MS Word.

# DPI CBE Work to Date

- NCDPI Operation Polaris
  - CBE Subcommittee
  - State Review of CBE Approaches
- NC CBE Site Visits
- Project Based Learning Academy
- JLEOC Report - March 2022



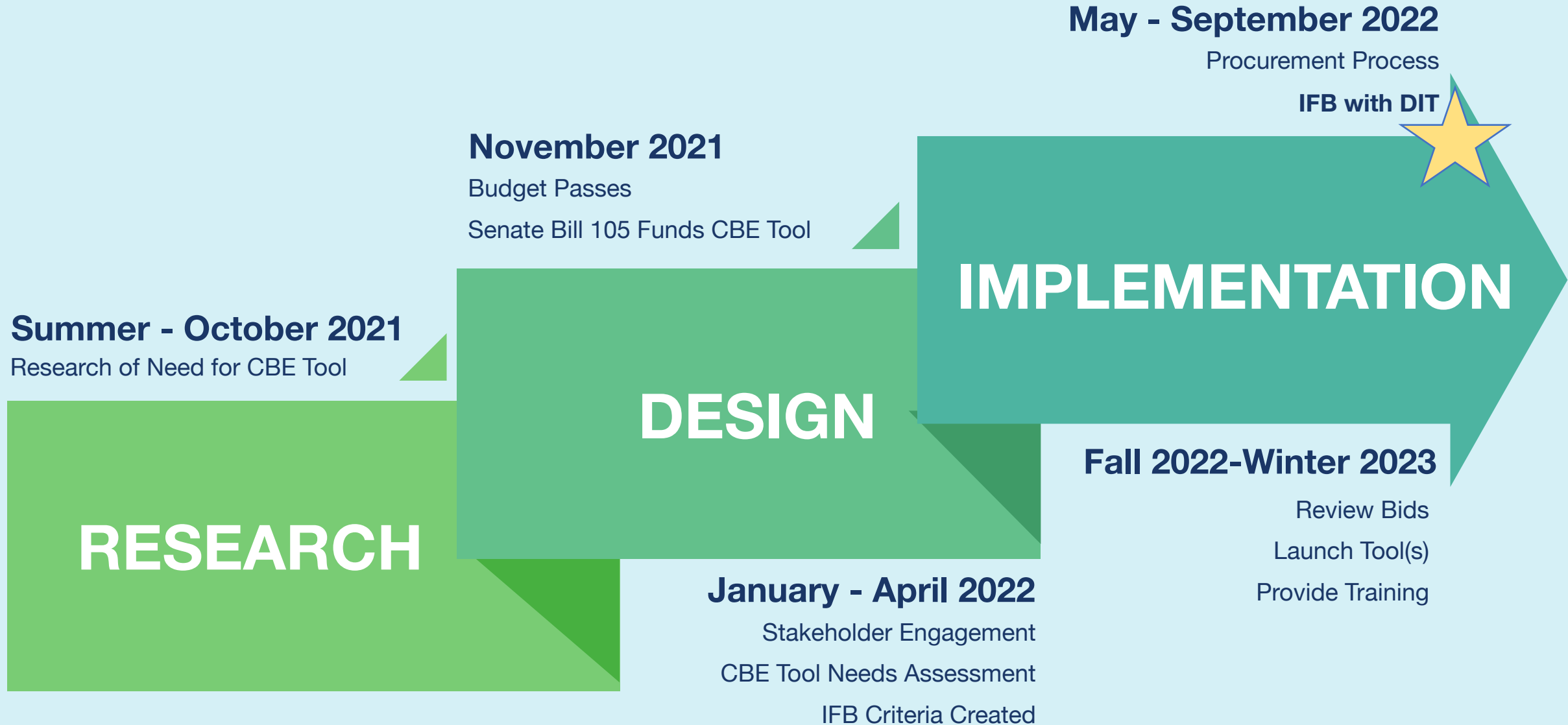
# CBE Platform Update

“\$9,000,000 to contract with a third-party entity for a period of up to three years for a **new software platform**, in response to the COVID-19 pandemic, to evaluate and improve student learning and performance and to provide students with an **individualized roadmap for improving learning and performance.**”

*Session Law 2021-180, Senate Bill 105, Section 7.27(a)(10)*



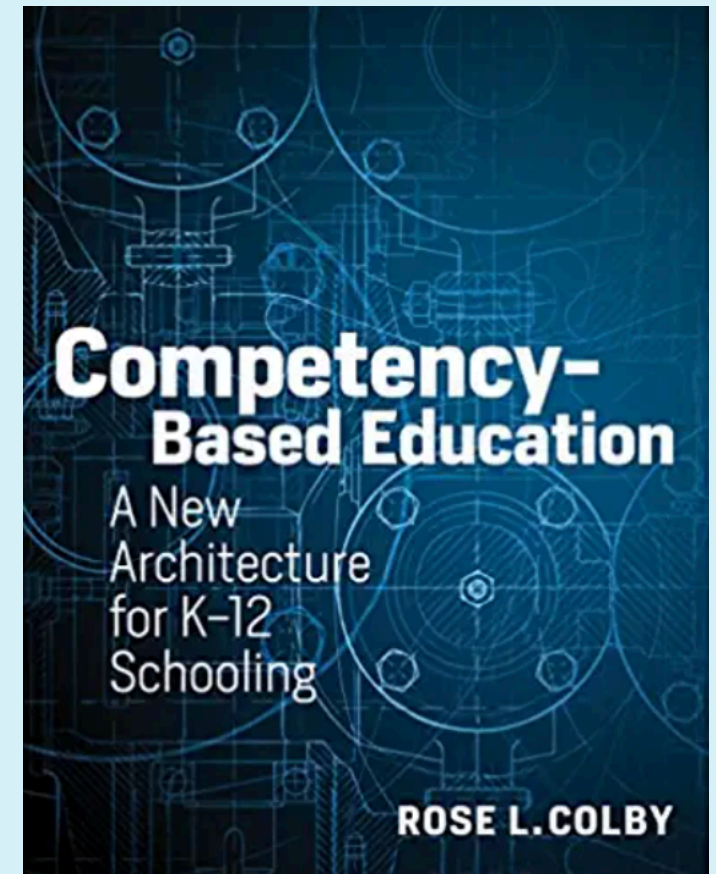
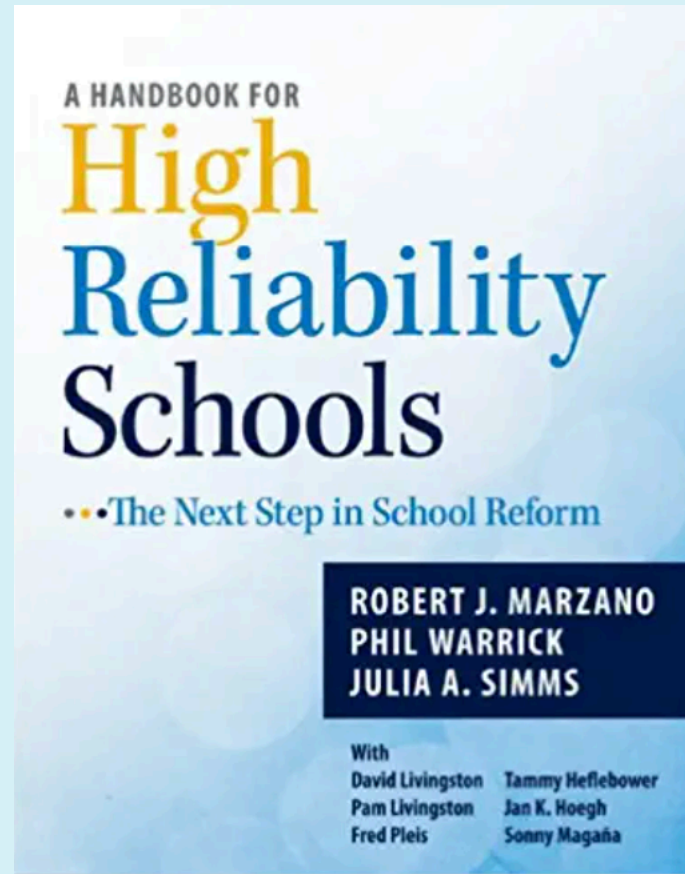
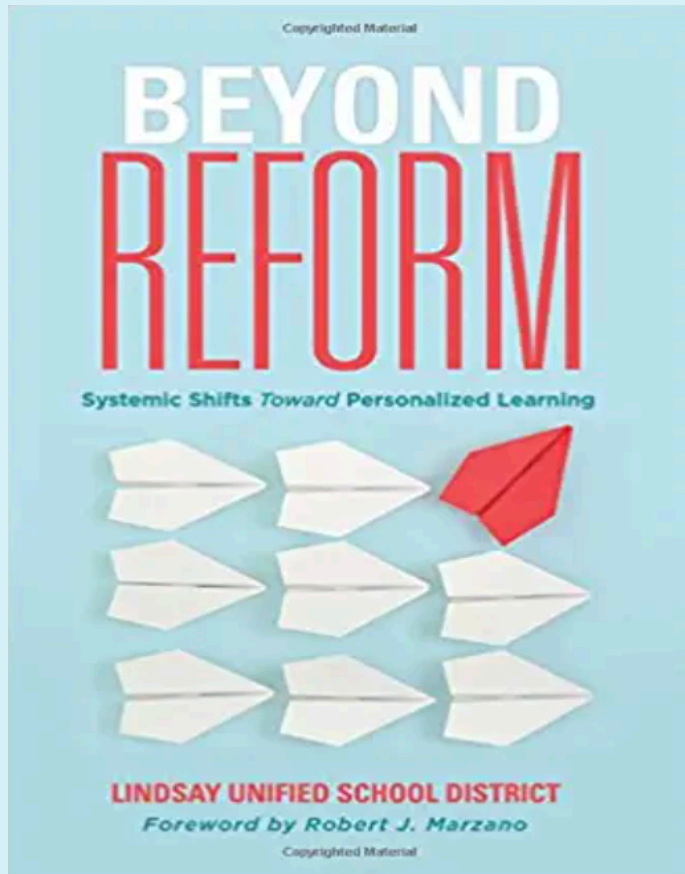
# DPI Work to Date - CBE Platform



# What's Next for CBE in NC?

- Launch CBE Platform(s)
- Develop Network of Early Adopters to Pilot CBE Platform(s)
- Evaluate Platforms for Effectiveness
- Continue Visiting CBE Models/Schools Across NC
- Develop CBE Roadmap for North Carolina

# Interested in Learning More?



# Update on Competency Based Education

## Questions?

*Andrew J. Smith Ed.D., Assistant Superintendent - Office of Innovation*

[Andrew.Smith@dpi.nc.gov](mailto:Andrew.Smith@dpi.nc.gov)