



**NORTH CAROLINA**  
State Board of Education  
Department of Public Instruction

---

# Report to the North Carolina General Assembly

Low-Performing Districts and  
Schools, Improvement Planning,  
and Statewide Support

---

*HB 2436 (Sec.7.3a-7.3b)*

*SL 2007-323.Sec.7.18(b)*

*HB 1473, 2007*

*Budget Act G.S. 115C-12(25)*

**Date Due: ---**

November 15, 2022

DPI Chronological Schedule, 2021-2022

Reporting on the 2021-2022 School Year

## STATE BOARD OF EDUCATION

STATE BOARD OF EDUCATION VISION: Every public school student in North Carolina will be empowered to accept academic challenges, prepared to pursue their chosen path after graduating high school, and encouraged to become lifelong learners with the capacity to engage in a globally-collaborative society.

STATE BOARD OF EDUCATION MISSION: The mission of the North Carolina State Board of Education is to use its constitutional authority to guard and maintain the right of a sound, basic education for every child in North Carolina Public Schools.

### **ERIC DAVIS**

Chair: Charlotte – At-Large

### **JILL CAMNITZ**

Greenville – Northeast Region

### **JOHN BLACKBURN**

Linville – Northwest Region

### **ALAN DUNCAN**

Vice Chair: Greensboro – Piedmont-Triad Region

### **REGINALD KENAN**

Rose Hill – Southeast Region

### **DONNA TIPTON-ROGERS**

Brasstown – Western Region

### **MARK ROBINSON**

Lieutenant Governor: High Point – Ex Officio

### **AMY WHITE**

Garner – North Central Region

### **J. WENDELL HALL**

Ahoskie – At-Large

### **DALE FOLWELL**

State Treasurer: Raleigh – Ex Officio

### **OLIVIA OXENDINE**

Lumberton – Sandhills Region

### **JAMES FORD**

At-Large

### **CATHERINE TRUITT**

Superintendent & Secretary to the Board: Cary

### **VACANT**

Southwest Region

## NC DEPARTMENT OF PUBLIC INSTRUCTION

**Catherine Truitt, State Superintendent :: 301 N. Wilmington Street :: Raleigh, North Carolina 27601-2825**

In compliance with federal law, the NC Department of Public Instruction administers all state-operated educational programs, employment activities and admissions without discrimination because of race, religion, national or ethnic origin, color, age, military service, disability, or gender, except where exemption is appropriate and allowed by law.

### **Inquiries or complaints regarding discrimination issues should be directed to:**

Thomas Tomberlin, Director of Educator Recruitment and Support, NCDPI

6301 Mail Service Center, Raleigh, NC 27699-6301 / Phone: (984) 236-2114 / Fax: (984) 236-2099

**Visit us on the Web: [www.dpi.nc.gov](http://www.dpi.nc.gov)**

# **Committee on Low-Performing Districts and Schools, Improvement Planning, and Statewide Support**

---

## **Executive Summary**

G. S. §115C-12(25) requires the State Board of Education to submit a report to the Joint Legislative Education Oversight Committee (JLEOC) annually regarding districts and schools identified as low-performing, effective improvement planning, and recommendations for additional legislation to improve student performance and increase local flexibility.

This report contains information regarding the implementation of new and/or amended statute in G. S. §115C-105.37. Identification of low-performing schools; G. S. §115C-105.37B. Reform of continually low performing schools; and G. S. §115C-105.39A. Identification of low-performing local school administrative units. Specifically, the report provides a summary about the results of the steps and process developed and implemented by the North Carolina Department of Public Instruction to support those districts and schools identified as low performing based on the 2021-2022 performance results. Additionally, the report includes the plans for reviewing and providing feedback on the improvement plans based on the results and appendices with the resources, documents, and calendar of events to be provided to districts and schools across the state with low-performing schools.

## Table of Contents

### Table of Contents

<b>STATE BOARD OF EDUCATION.....</b>	<b>2</b>
<b>NC DEPARTMENT OF PUBLIC INSTRUCTION .....</b>	<b>2</b>
<b>Executive Summary.....</b>	<b>4</b>
<b>Overview of Legislation and District/School Data .....</b>	<b>6</b>
Legislation .....	6
Execution of Legislation.....	8
Trends and Patterns from Low-Performing Plans .....	8
Strategic Reform Services: School Reform Models.....	9
<b>Low-Performing Districts and Schools.....</b>	<b>13</b>
<b>Overview of North Carolina Department of Public Instruction Support .....</b>	<b>16</b>
Office of District & Regional Support .....	16
Diagnostic Services: Comprehensive Needs Assessments and Follow-Up Support .....	16
Transformation (CARES): An Intensive Intervention Pilot.....	18
Recommendations for Additional School Improvement Legislation .....	22
<b>Appendix .....</b>	<b>24</b>
2021-2022 Low-Performing Schools List.....	25
2021-2022 Low-Performing Districts .....	51
2021-2022 Recurring Low Performing Schools List .....	52
2021-2022 Continually Low Performing Charter Schools List .....	69
CARES Intensive Intervention Pilot 2021-2022 .....	71

## Overview of Legislation and District/School Data

The following report provides a brief summary of legislation about the definition of low-performing schools and low-performing local school administrative units. In addition, the report provides a general analysis of trends and patterns identified in the plans submitted to the Department of Public Instruction for feedback. Also included in the report are the final results of performance and growth data for low-performing districts and schools based on the analysis of School Performance Grades (SPG) from the 2021-2022 year. The report specifically presents the following information and data:

1. Summary of the legislation concerning low-performing districts and schools,
2. Summary of findings based on the submitted Low-Performing Local School Administrative Units' and Schools' improvement plans,
3. Summary analysis of 2021-2022 Accountability results, and
4. Overview of the projected timeline and process for the 2021-2022 improvement plans based on low-performing results.

### *Legislation*

In September 2015, Session Law 2015-241 House Bill 97, provided amended definitions for low-performing schools and a new designation for low-performing districts. Included in both the amended and new designations were specifically defined processes, procedures, and requirements for low-performing schools and districts. The following tables provide summary information regarding the requirements based on current legislation:

**Table 1: September 2015 Statute for Low-Performing Schools and Local School Administrative Units**

General Statute	Explanation
<b>§ 115C-105.37. Identification of low-performing schools</b>	Defines low-performing schools as those that receive a school performance grade of <b>D</b> or <b>F</b> <i><b>and</b></i> a school growth score of " <b>met expected growth</b> " or " <b>not met expected growth</b> "
<b>§ 115C-105.39A. Identification of low-performing local school administrative units</b>	Defines a low-performing school administrative unit as a unit in which the <b>majority</b> of the schools in that unit that earned an overall school performance grade and school growth score identified as <b>low-performing schools</b>

**Table 2: Low-Performing Legislative Requirements**

<b>Requirement According to Legislation</b>	<b>Explanation</b>	<b>Timeline/Deadline</b>
Identification	State Board of Education identifies low-performing schools and low performing districts	Annually
<b>Low-Performing Schools</b>		
Principal Decision	Superintendent determines from 4 options employment of the principal of each low-performing school	Within 30 days of low-performing designation
School Plan for Improvement	A preliminary plan (with public input) for improving both the school performance grade and school growth score submitted to the local board	Within 30 days of low-performing designation
Written Notification to Parents	Written notice should contain school's performance grade and growth score earned, and plan for improvement	Within 30 days of low-performing designation
Local Board Approval	Local Board approves, modifies, or rejects preliminary plan	Within 30 days of receiving the plan
Submit plan to State Board	The plan is submitted to the State Board for recommendations	Within 5 days of local board approval
Feedback regarding the plan	The State Board reads and provides recommendations about the plan	Expedientiously
Consider feedback	Local board amends the plan as needed and submits final plan to the State Board	After local board final approval
Access to the final plan	The final plan is accessible through local school administrative unit website and the NC Department of Public Instruction's website	Upon final submission
<b>Low-Performing Local School Administrative Unit</b>		
Principal Decision	Superintendent determines from 4 options employment of the principal of each low-performing school	Within 30 days of low-performing designation
District Plan for Improvement	A preliminary plan (with public input) for improving each schools' performance grade and school growth score, monitoring each schools' progress, and administrative unit's possible policy changes is submitted to the local board	Within 30 days of low-performing designation
Written Notification to Parents	Written notice should be sent to parents of all students attending any school deemed low-performing in the local administrative unit. Notification should define low-performing local school administrative unit, percentage of schools identified, information about individual low-performing school, and plan for improvement	Within 30 days of low-performing designation
Local Board Approval	Local Board approves, modifies, or rejects preliminary plan	Within 30 days of receiving the plan
Submit plan to State Board	The plan is submitted to the State Board for Recommendations (December 2019)	Within 5 days of local board approval

Feedback regarding the plan	The State Board reads and provides recommendations about the plan	Expeditionously
Consider feedback	Local board amends the plan as needed and submits final plan to the State Board	After local board final approval
Access to the final plan	The final plan is accessible through local school administrative unit website and NC Department of Public Instruction's website	Upon final submission

### *Execution of Legislation*

The Department of Public Instruction provides a series of support services to guide districts and schools through the statutory requirements of the low performing designation. In the month of September 2021, the Department's Office of District & Regional Support provided multiple communications streams to districts about S.B. 654 which continued designations from the 2018-2019 year, continued availability of School Improvement Plans on the Department's website, eliminated parental notification, and continued assistance and intervention levels provided for the 2019-2020 school year. Districts/schools were given until December 4, 2021 to update/submit the 2020-2021 improvement plan and archive the previous year's plan with a deadline of January 31, 2021, for receiving feedback from the Office of District & Regional Support. After reminder emails, 98% of the schools designated as Low Performing submitted an improvement plan via the NCStar platform. These schools were offered support with school improvement planning and NCStar from School Leadership Coaches and other members of District & Regional Support specially trained to offer support. Formal letters were not sent to those out of compliance due to the continuation of the designation in S.B. 654.

### *Trends and Patterns from Low-Performing Plans*

The Office of District & Regional Support and the Office of Charter Schools provided feedback to Low-Performing districts, schools, and charters within each region through NCStar. NCStar is a web-based tool that guides a district or school team in charting its improvement and managing the continuous improvement process. The plans for improvement submitted by low-performing districts and schools focused on practices that would help achieve yearly goals and were submitted to the North Carolina Department of Public Instruction for feedback through NCStar. Many of the plans contained similar strategies for addressing the needs in low-performing schools and the data summarized in Table 3 also suggests implications for ongoing professional development to continue to build the capacity of district and school personnel. Identifying these trends has been an integral aspect of developing and continuing effective practices of support for classroom, building level, and district level personnel.

In addition to the themes found in Table 3, one common finding is the limited coaching statewide that is occurring from district to schools regarding school improvement. Many districts lack the human capital and resources to devote time to assist school administrators and/or school improvement teams. A recent study by the SERVE Center at UNC-G also found the need for constructive communication between districts and schools around school improvement planning<sup>1</sup>. Respondents in the SERVE study indicated that the support and guidance provided by district coaches when available were of great help. Unfortunately, a number of respondents to the study shared that no district coach was assigned to their school.

<sup>1</sup>SERVE Center at UNCG. (August 2019). NCStar: A pilot study of fidelity of implementation.

**Table 3: Common Themes in Low-Performing Plans**

Plan is a compliance artifact that helps meet statutory requirements instead of a guiding, living document that drives improvement
No performance measures that help the school keep track of progress towards goals and allow for data-driven decisions to be made throughout the school year
Lack of understanding of a tiered-instructional model that contains interventions that help all students achieve success
Attempting to address all areas of need instead of focusing on a limited number of effective practices - a concentrated approach to school improvement
Stagnant plan instead of it being continuously revised and adjusted as student needs are addressed
Overall necessity to develop action steps that help sustain effective practices even with yearly human capital changes
Limited distribution of leadership which assists in growing leaders and building internal capacity

### *Strategic Reform Services: School Reform Models*

In addition to the themes identified through these plans, the State Board of Education sought to identify practices that nationally supported school and district improvement. Successful implementation with fidelity of the components of the school reform models Transformation, Turnaround, Restart, and Closure showed promise in improving chronically under-performing schools nationally. Aligning with North Carolina's law for reform of low-performing schools (G.S. 115C-105.37B) the State Board of Education adopted a policy (DSTR-040) in May of 2016, allowing recurring low-performing schools an opportunity to apply for approval to implement components of these reform initiatives.

A summary of each reform initiative can be found in Table 4. Recurring low-performing schools are those schools that have been low-performing for two of the previous three consecutive years. The list of recurring low-performing schools can be found in the Appendix.

In March of 2020, the State Board of Education approved updates to the DSTR-040 policy, which provided clarification on the criteria for Academic Gain, the monitoring cycle, and the continued authorization for Restart schools. Due to the impact of COVID19, the policy was updated again in May of 2020 and November 2021, to account for the lack of performance data to extend the monitoring cycle. In December of 2020, the policy was updated to include an express commitment to Restart model during the full monitoring cycle. In September of 2022, revisions to the policy included clarification concerning Continued Authorization, support, and Removing Authority for the Model.

**Table 4: School Reform Models**

<b>Transformation</b>	In order to qualify for implementation of the transformation model, the LEA must demonstrate that a school has created a plan for developing and improving teacher and school leader effectiveness; for implementing comprehensive instructional reform strategies; for increasing learning time; for creating community-oriented schools; and for providing operational flexibility and sustain support. The LEA shall submit specific goals for academic
-----------------------	--



	achievement and shall submit a budget showing the revenues and expenditures needed to reach the goals.
<b>Turnaround</b>	In order to qualify for implementation of the turnaround model, the LEA submits specific grounds supporting the implementation of this model; specifies the academic goals expected from implementation of this model; specifies the procedures to be utilized in removing staff, including procedures consistent with Due Process; describes with specificity the new governance structure and the budget to be implemented; sets forth specific academic achievement expected to be realized from use of this model.
<b>Restart</b>	In order to qualify for implementation of the restart model, the LEA submits a detailed plan outlining the goals to be achieved, including how to provide each student with the opportunity for a sound basic education; a statement as to how operating the school with the same exemptions from statutes and rules as a charter school authorized under N.C.G.S. 115C-218 et seq. will facilitate accomplishing these goals; how these exemptions will increase student achievement; whether the LEA will employ an educational management organization and, if so, the name and credentials of that organization and a budget setting out anticipated revenue and expenditures necessary to achieve the goal. A school operated under this subdivision remains under the control of the local board of education, and employees assigned to the school are employees of the local school administrative unit.
<b>Closure</b>	In order to qualify for implementation of the closure model, the LEA submits the specific grounds recommending closure of a particular school; the procedures it intends to follow in closing the school, including opportunities for public hearing; the procedures for ensuring a smooth transition for employee and students affected by the closure; how the resources realized from closure will continue to support student achievement, and the specific academic gains expected to be realized by the closure.

As of July 2022, twenty-eight school districts have been approved to implement a reform model, all of which selected the Restart Model. Table 4.1 summarizes the current information of authorization for reform model implementation.

**Table 4.1: School Reform Model Totals**

<b>Reform Model Selected</b>	<b>Number of Participating Schools</b>
Transformation	0
Turnaround	0
Restart	151
Closure	0

All Reform Models are required by GS 115C-105.37B and State Board Policy DSTR-040 to submit an Annual Report documenting academic gains. Schools complete the report all subsequent years after completing the first year of implementation of the approved Reform Model. Table 4.2 summarizes the number of schools submitting an annual report after their initial year of implementation. The 58 schools in Cohort 1 have implemented the Restart Model since either 2016-2017 or 2017-2018. There are 49 schools from Cohort 2 who have implemented the model since 2018-2019. Cohort 3 included an additional 13 schools implementing the model since 2019-2020. Finally, Cohort 4 included an additional 16 schools implementing the Restart Model since 2020-2021.

**Table 4.2: Annual Report Summary – Number of Schools Reporting**

Annual Report Restart Schools	Number of Participating Schools	Cohort
Submitted March 2019*	58	Cohort 1
Submitted December 2019	107	Cohort 1-2
Submitted December 2020	120**	Cohort 1-3
Submitted December 2021	135	Cohort 1-4

\*Submission deadline delaying due to Hurricane Florence. Original submission date would have been December 2018.

\*\*One school in Cohort 1 has since rescinded their Restart application adjusting the current total to 119 Restart schools in Cohort 1, 2, & 3.

Restart Model schools are monitored for their progress in demonstrating Academic Gain. There are five criteria for Academic Gain including: Recurring Low-Performing designation, School Growth Status, Achievement Score, Subgroup Growth Status, and school defined Flexibility Outcomes.

Yearly progress monitoring is conducted to inform the school if they are above, meeting, or not meeting the expectations for Academic Gain and based on a comparison between the year before implementation and the most recent year of implementation.

For the 2020–21 school year, the United States Department of Education and the North Carolina General Assembly granted North Carolina waivers from school accountability (School Performance Grades). Therefore, Academic Gain Results for the 135 Restart schools who submitted *December 2021 Restart Annual Report* were not calculated for Continued Authorization.

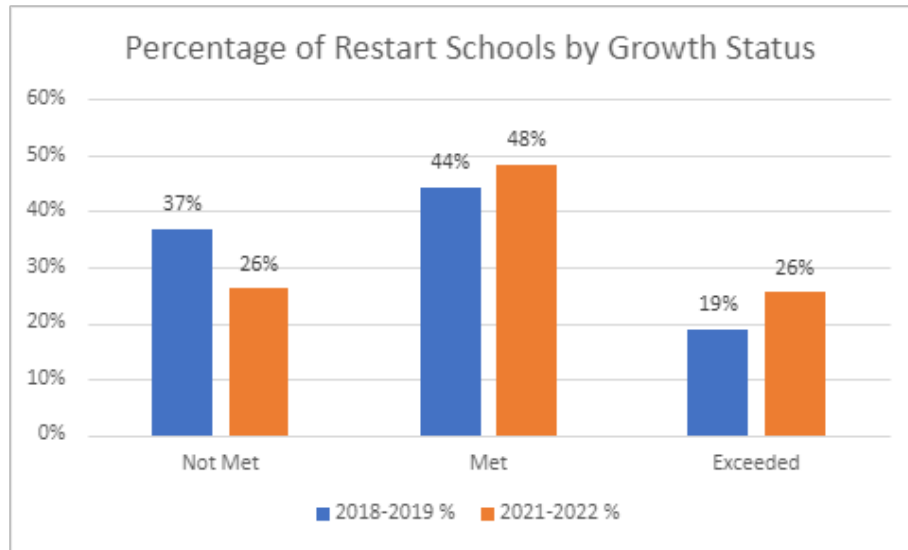
The *December 2021 Restart Annual Report* only required reporting on the Restart flexibilities utilized in the 2020-2021 school year. Of the 135 schools implementing the Restart Model and required to report, the following Table 4.5 represents a summary of the flexibilities reported as being employed in the Annual Report. Flexibilities are self-reported in the annual report.

**Table 4.3: Restart Model Summary on Utilized Flexibilities During 2020-2021**

**(Based on December 2021 Annual Report)**

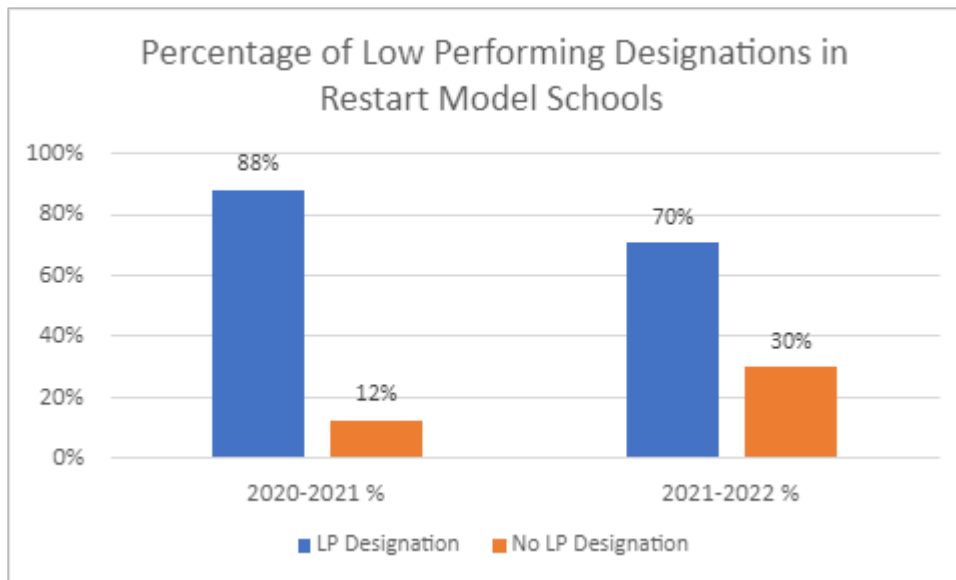
Flexibility/Exemption from law	Percentage of Schools Utilizing Flexibility	Number of Schools Utilizing Flexibility
Budget	95%	128 / 135 schools
Calendar	17%	23 / 135 schools
Employment Requirement	39%	52 / 135 schools
Standard Course of Study/Curriculum	7%	10 / 135 schools
Assessment	12%	12 / 135 schools

The Restart Annual Report is due on December 1<sup>st</sup> of each year as outlined in SBE DSTR-040 policy. The deadline for the upcoming *December 2022 Restart Annual Report* is December 1<sup>st</sup>, 2022, and thus, Academic Gain results will be calculated after this time. Preliminary data released to the SBE in September 2022 indicate the following changes based on 2021-2022 performance data:



**Table 4.4 Percentage of Restart Schools by Growth Status**

Growth Status	2018-2019*	2018-2019 %	2021-2022	2021-2022 %
Not Met	39	37%	38	26%
Met	47	44%	72	48%
Exceeded	20	19%	39	26%
Total Schools Operating	106		149	
*Growth Status was not available for 2020-2021 due to the USED and the NCGA waiver granted to North Carolina from school accountability (School Performance Grades).				



**Table 4.5 Percentage of Low Performing Designations in Restart Model Schools**

Low Performing Designation	2020-2021*	2020-2021 %	2021-2022	2021-2022 %
LP Designation	116	88%	105	70%
No LP Designation	16	12%	44	30%
Total Schools Operating	132		149	
*2020-2021 designations continued from 2018-2019 based on North Carolina General Assembly Session Law 2021-130.				

## Low-Performing Districts and Schools

In September of 2022, the State Board of Education approved the lists of 2021-2022 low-performing schools, traditional and charter, and low-performing districts and recurring low-performing schools. The full list of schools and districts can be found in the Appendix beginning on page 24.

### *Accountability Data Sets and Reports*

The 2021–22 school year was the third school year with impacts from the COVID-19 Pandemic. Schools resumed face-to-face instruction, and virtual programs continued to be available for students. Students and the education community continued to be affected by COVID, particularly when COVID exposures required students to be absent from school or revert to remote learning. This report must be reviewed within that context, meaning, though instructional delivery was not as varied as in the 2020–21 school year, it continued to be an anomaly in comparison to the 2018–2019 school year, which was prior to the onset of the pandemic. The table below provides a summary of the low-performing schools and districts by NC State Board Region.

**Table 5: Summary of the 2021-22 Low-Performing Traditional Schools, Charter Schools and Districts**

Designation	Total	Southeast Region	Northeast Region	North Central Region	Sandhills Region	Piedmont-Triad Region	Northwest Region	Southwest Region	Western Region
<b>Low-Performing Traditional Schools</b>	793	84	67	138	84	173	45	165	37
<b>Low-Performing Public Charter Schools</b>	67*	9	2	17	6	9	0	22	0
<b>Low-Performing Lab School</b>	4	1	1	0	0	2	0	0	0
<b>Low-Performing District</b>	29	2	10	6	2	5	0	3	1

\*The 2 Virtual Charter Schools are not assigned to a region

Table 6 below provides the summary of schools and districts removed (No Longer Designated), newly identified (Newly Designated), the net change from the 2020-2021 (based on 2018-19 data) and the new total for 2021-2022. When comparing the results from 2020-2021 to 2021-2022, there is an overall increase of 376 low-performing schools, from 488 to 864. Although, it should be noted that even with the recovery from the pandemic, 146 schools were no longer designated as Low Performing. When comparing the low-performing districts in 2020-2021 to 2021-2022, there was an increase of 20 low-performing districts, from 9 to 29. Further analysis of the data shows a breakdown of schools and districts that remain on the list, the

totals that are no longer low-performing and those schools and districts newly identified in the recent release of Accountability results.

**Table 6: Comparison Data for 2020-2021 to 2021-2022**

	<b>Total 2020-2021</b>	<b>No Longer Designated</b>	<b>Newly Designated</b>	<b>Net Change</b>	<b>Total 2021-2022</b>
<b>All Schools</b>	488	146	522	<b>(+376)</b>	864
<b>Traditional Public</b>	441	131	483	<b>(+352)</b>	793
<b>Public Charter</b>	42	14	39	<b>(+25)</b>	67
<b>Lab School</b>	5	1	0	<b>(-1)</b>	4
<b>Districts</b>	9*	3*	23	<b>(+20)</b>	29
<b>Recurring Traditional LP Schools</b>	423	52	93	<b>(+41)</b>	464
<b>Continually LP Charters</b>	38	10	7	<b>(-3)</b>	35

\* This count includes ISD as a district which transferred ownership of Southside Ashepole ES back to Public Schools of Robeson County in June 2022.

Tables 7.1-7.4 show a breakdown of the 2021-2022 school performance grade and growth status for the 864 low-performing schools by the definition criteria established in Session Law 2015-241 House Bill 97.

**Table 7.1: 2021-2022 Low-Performing Schools Total by Grade and Growth**

ALL LP SCHOOLS	<b>Letter Grade D Growth MET</b>	<b>Letter Grade D Growth NOT MET</b>	<b>Letter Grade F Growth MET</b>	<b>Letter Grade F Growth NOT MET</b>
<b>Low-Performing Traditional Schools</b>	292	280	95	126
<b>Low-Performing Charter Schools</b>	28	22	10	7
<b>Low-Performing Lab Schools</b>	1	0	3	0
<b>TOTAL</b>	321	302	108	133

**Table 7.2: 2021-2022 Low-Performing Schools D School + Met Growth by Region**

D School + Met Growth	<b>Southeast Region</b>	<b>Northeast Region</b>	<b>North Central Region</b>	<b>Sandhills Region</b>	<b>Piedmont -Triad Region</b>	<b>Northwest Region</b>	<b>Southwest Region</b>	<b>Western Region</b>	<b>Total</b>
<b>Low-Performing Traditional Schools</b>	22	33	63	32	60	21	46	15	292
<b>Low-Performing Charter Schools</b>	5	0	7	1	4	0	11	0	28
<b>Low-Performing Lab Schools</b>	0	1	0	0	0	0	0	0	1
<b>TOTAL</b>	27	34	70	33	64	21	57	15	321

**Table 7.3: 2021-2022 Low Performing Schools D School + Did NOT Meet Growth by Region**

D School + Did NOT Meet Growth	Southeast Region	Northeast Region	North Central Region	Sandhills Region	Piedmont -Triad Region	Northwest Region	Southwest Region	Western Region	Virtual	Total
Low-Performing Traditional Schools	36	15	38	23	64	22	63	19	0	280
Low Performing Charter Schools	2	1	5	3	4	0	5	0	2	22
Low Performing Lab Schools	0	0	0	0	0	0	0	0	0	0
<b>TOTAL</b>		16	43	26	68	22	68	19	2	302

**Table 7.4: 2021-2022 Low-Performing Schools F School + Met Growth by Region**

F School + Met Growth	Southeast Region	Northeast Region	North Central Region	Sandhills Region	Piedmont -Triad Region	Northwest Region	Southwest Region	Western Region	Total
Low-Performing Traditional Schools	13	10	16	13	19	0	23	1	95
Low-Performing Charter Schools	1	1	2	1	1	0	4	0	10
Low-Performing Lab Schools	1	0	0	0	2	0	0	0	3
<b>TOTAL</b>	15	11	18	14	22	0	27	1	108

**Table 7.5: 2021-2022 Low-Performing Schools F School + Did NOT Meet Growth by Region**

F School + Did NOT Meet Growth	Southeast Region	Northeast Region	North Central Region	Sandhills Region	Piedmont -Triad Region	Northwest Region	Southwest Region	Western Region	Total
Low-Performing Traditional Schools	13	9	21	16	30	2	33	2	126
Low-Performing Charter Schools	1	0	3	1	0	0	2	0	7
Low-Performing Lab Schools	0	0	0	0	0	0	0	0	0
<b>TOTAL</b>	14	9	24	17	30	2	35	2	133

## **Overview of North Carolina Department of Public Instruction Support**

The Department of Public Instruction provides a series of support services to districts and schools designated as low performing. Webinars were held in September to guide districts/schools through the statutory requirements of the low performing designation including the timeline to submit improvement plans, samples of parental notification, and guidance for the super observation process. Once all plans are submitted to the State Board of Education through NCStar, feedback will be given to each school and district based on best practices related to school improvement planning. Professional Development is held every fall and spring to provide technical assistance on NCStar and to share best practices for continuous improvement. Additional services are provided to designated schools through the Office of District & Regional Support.

### ***Office of District & Regional Support***

The statewide unit of District and Regional Support (DRS) within the Division of District & School Support Services provides support for Low Performing and Recurring Low Performing Schools across the state. The division includes the following sections: Educator Advancement, School/District Improvement Plan Support, Diagnostic Services, Strategic Reform, and the currently piloted, intensive intervention known as Transformation (CARES). The mission of DRS is to provide support to identified districts and schools through partnerships that result in every child having equitable access to a meaningful, sound basic education. DRS works on the development and implementation of processes, procedures, and structures that will lead to higher student achievement and sustainable change. As the needs of the district or school increase, the level of services provided also increases.

### ***Diagnostic Services: Comprehensive Needs Assessments and Follow-Up Support***

Diagnostic Services provide evidence-based frameworks to assist identified districts/schools in analyzing and determining the impact of practices on student learning. Diagnostic Services result in a diagnosis of strengths and weaknesses to support districts and schools in improving outcomes. These steps are essential in supporting low performing schools. NC DPI's Comprehensive Needs Assessment process is a systematic assessment of instructional practices, processes, and systems within a school district that assists district and school leadership in determining needs, examining their nature and causes, and setting priorities for future action led by the Diagnostic Services team. The assessment consequently guides meaningful strategic/improvement planning at both the district and/or school level and suggests benchmarks to guide improvement evaluation. Research suggests that school districts that undergo a careful analysis of data and information from a third-party make better decisions about what to change and how to institutionalize systemic change. The district/school Comprehensive Needs Assessment provides a framework for conducting this analysis in a process-driven, evidence-based way.

Prior to the assessment, professional development is provided to principals and central office staff that explains the following:

- the Comprehensive Needs Assessment process;
- the NC DPI Comprehensive Needs Assessment rubric (which has been revised to include Early Learning indicators) utilized during the district/school assessment;
- personnel's role in the assessment; and
- preparation of a Self-Evaluation that begins the review process.

The site visit conducted as part of the process consists of the following:

- collaborative discussions with district and school leadership;
- classroom visits; and
- focus group sessions with teachers, students, and parents.

All of which are underpinned by the NC DPI Comprehensive Needs Assessment rubric.

The District Comprehensive Needs Assessment site visit consists of the following:

- collaborative discussions with the superintendent;
- collaborative discussions with district-level staff;
- focus group sessions with school board members and principals; and
- observation of a school board meeting.

All of which are underpinned by the NC DPI Comprehensive Needs Assessment rubric.

The assessment culminates with a report that:

- triangulates the evidence found during the assessment process and reports findings for all six dimensions of the NC DPI Comprehensive Needs Assessment rubric in terms of evidence and resulting impact on students and improvement efforts;
- is written in draft form and sent to district or school leadership for a check of factual accuracy; and
- is finalized and provided to district, school, and Department of Public Instruction leaders so that they may use this information to drive, revise, and support improvement efforts.

After the completion of the Comprehensive Needs Assessment Process, the Diagnostic Services team provides follow-up support by way of a Virtual Bridge Support session with the school's administrative team and a two-day professional development session referred to as the "CNA Unpacking." Over the course of the two-day "CNA Unpacking" session an assigned Instructional Review Coach or Diagnostic Liaison works the school principal and the School Improvement Team to accomplish the following:

- deepening the staff's understanding of the NC DPI Comprehensive Needs Assessment process and rubric;
- reading the report in its entirety and identifying and analyzing the evidence reported with a focus on noting and discussing IMPACT of the work on students and improvement efforts;
- engaging in and completing a root cause analysis exercise around one of the identified areas for improvement;
- engaging in a detailed strategic planning activity to address one of the resulting root causes; and
- connecting resulting actions to existing improvement indicators and incorporating changes and revisions based on the work over the course of the two-day session into the school's improvement plan.

Work started during the Unpacking training is continued by the Diagnostic Liaisons (DL) who works alongside school leaders and engages in the subsequent Unpacking training to:

- build capacity for effective self-assessment using tools from the CNA process;
- Work with schools in building processes to support a cycle of continuous improvement;
- develop tools and training aligned with identified needs resulting from the CNA process;
- collaborate with regional team members in order to leverage diagnostic findings and cross-agency support; and
- support School Improvement Teams in both strategic planning and progress analysis using results from the CNA process.

Follow-up support for districts that have engaged in a Comprehensive Needs Assessment includes engaging with the Superintendent, district-level staff, and some board members in the same professional



development work as described above to support district leadership in improving the districts strategic plan and support for schools.

In response to House Bill 1050, the Comprehensive Needs Assessment rubrics have been amended to include a high-level review of early childhood learning opportunities in low-performing administrative units, highlighting any areas for improvement that may arise related to (1) training levels of early childhood teachers and support staff (2) the ratio of students to teachers (3) alignment of preschool curricula to curricula for kindergarten through third grade (4) kindergarten transition supports, including collaboration with preschool educators and (5) kindergarten preparedness within the context of the Comprehensive Needs Assessment process. The amended rubric will be in place beginning with the 2021-22 school year.

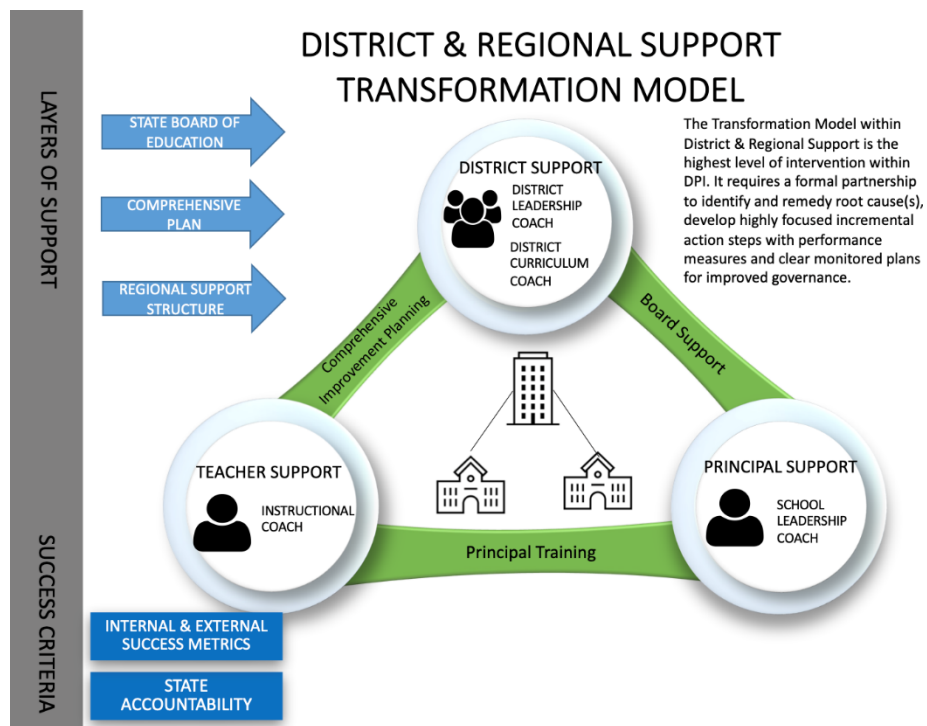
### ***Transformation (CARES): An Intensive Intervention Pilot***

Transformation (CARES) Support is the highest level of intervention within the Department of Public Instruction. It requires a formal partnership to identify and remedy root cause(s) and develop highly focused incremental action steps with performance measures and clearly monitored plans for improved governance.

The purpose of this initiative is to assist those in need of the greatest intervention in managing obstacles to achieving student success during the pandemic. Support was targeted and continues, based on schools with chronic performance issues (low performing status since 2015-2016 designation), high poverty status (defined in WestEd report), and percentage of students affected in the district. In September 2015, Session Law 2015-241 House Bill 97, provided amended definitions for low-performing schools and a new designation for low-performing districts. Trend analysis revealed that 181 traditional schools had been on the list for low performance since this 2015 law change. These schools and districts were categorized internally as *chronically low performing*. These schools were also then analyzed according to high poverty status (>70%) and percentage of students affected. Districts and schools were approached, and a partnership was formed with those who were receptive to participating.

With the federal funding that has been provided to assist with the impact of COVID-19, DRS developed additional support to extend the current services offered to low performing schools. In this model, staff were assigned to districts and/or schools to provide daily coaching and support with the goal of improving daily practices that lead to improved student achievement. The Office of DRS developed partnerships with 24 districts to support 81 schools statewide. The supports for these schools have been customized depending on identified needs (see Appendix A for list of CARES schools).

## THE MODEL



### SUPPORT ROLES

- **District Leadership Coach (DLC)** – District Leadership Coaches work onsite at the district level to build leadership capacity by developing and implementing reformative and innovative processes, procedures, and structures that will lead to improved student achievement. This role leads the Assistance Team that is outlined in Part 3 of Chapter 115C of the General Statutes.
- **District Curriculum Coach (DCC)** – District Curriculum Coaches provide onsite support to the six CARES districts by assisting district leadership in the development and implementation of strategic methods to improve curriculum alignment, the use of evidence-based instructional practices, and the effective implementation of the North Carolina Standard Course of Study.
- **School Leadership Coach (SLC)** – School Leadership Coaches work at the school site to build the capacity of the principal and school leadership team with an emphasis on instructional leadership and the development of continuous improvement processes that result in strong systems and structures.
- **Instructional Coach (IC)** – Instructional Coaches will provide high leverage targeted on school site instructional support to identified low-performing districts/schools. The ICs will work in collaboration with the DLCs, DCCs, and SLCs.

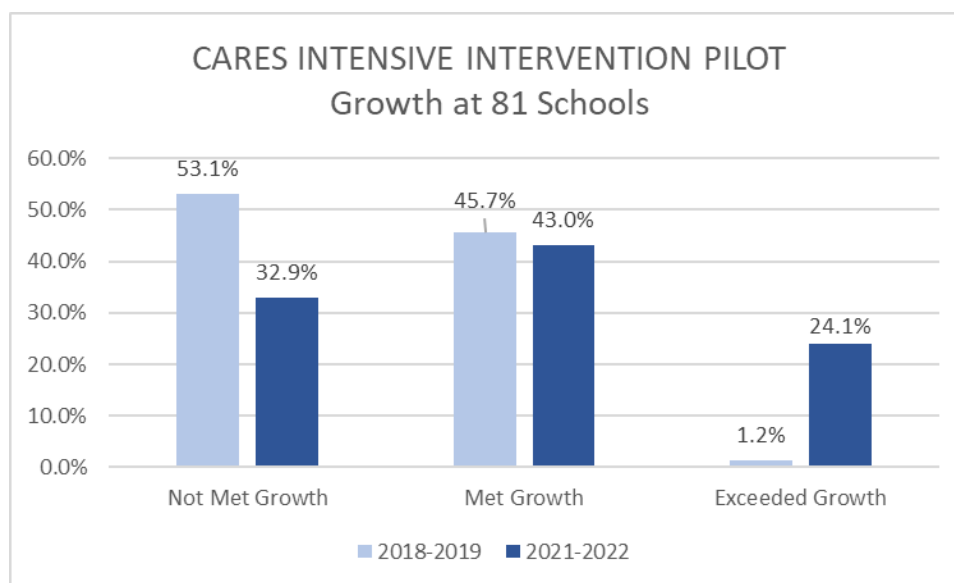
Because of the temporary federal funding, DRS has established a prototype for the highest level of intensive support known as the CARES initiative. This enables DRS to enter a formal partnership with and provide resources to chronically low-performing schools and districts. The support has been established to align to the permanent work of the division and directly connects to both well-established, research-based support levels, Diagnostic Services and School/District Improvement Planning. All 24 districts and 81 schools agreed to participate in the CARES initiative through a Memorandum of Agreement.

## NC ILA PILOT

The NC Instructional Leadership Academy (NC ILA) Pilot provided principals and principal managers the unique opportunity to deepen their skills in instructional leadership levers as identified in Leverage Leadership (Bambrick-Santoyo, 2012) and Leverage Leadership 2.0 (Bambrick-Santoyo, 2018). The curriculum is rooted in pedagogical theory and grounded in evidence of what works best in schools. The program incorporates skills and mindsets that have the greatest impact on student learning and character development. The faculty are experienced PK-12 school leaders with track records of helping students achieve exceptional academic growth. They observe, coach, and develop leaders onsite and virtually to support growth and continuous improvement. In 2021, DRS initiated a pilot program within one of the CARES districts with 50 participants formed by principal supervisors and 12 school teams, which consisted of a principal and two additional school leaders. In 2022, the pilot has expanded to work with an additional 100 participants and the remaining 24 school teams in the district. The work will help build instructional capacity of all teachers, academic coaches, school administrators, and central office leaders in the district which should result in all schools meeting or exceeding growth. Starting in the Fall of 2022, NCDPI will launch their first statewide cohort of North Carolina Instructional Leadership Academy where approximately 1500 educators that help build instructional capacity in schools will participate in a two-year professional development program designed to improve their instructional leadership skills at both district and school level.

### SUCCESS METRICS

Based on the work of the CARES team in 24 districts across the state, external metrics were selected that quantify efforts for school improvement. These metrics include: Student Proficiency, Chronic Absenteeism, Behavior/Discipline Data, and Culture & Climate Data (as evidenced by TWC). These data will be tracked and used to determine progress for external stakeholders. Even though the majority of these data points are not available for analysis until November, below is a chart that shows the impact of the CARES team of coaches after working in these 81 schools during the first year. Schools that previously did not meet growth decreased from 53.1% to 32.9% and schools that exceeded growth increased from 1.2% to 24.1%. Districts have also seen the impact of the NCDPI coaching and have requested for more schools to be served. Unfortunately, with limited human capital we are unable to fulfill all requests for job-embedded daily coaching support.



Internal metrics of success will be used to show a progression of improvement in seven piloted areas: Governance, Instructional Excellence & Alignment, Leadership Capacity; Human Capital; Planning & Operational Effectiveness; Culture; and Family & Community. These areas were correlated with foundational documents already in use by the Department to gauge effectiveness (Professional Teaching Standards; Principal Evaluation Standards, Comprehensive Needs Assessment dimensions, NCStar indicators, etc.) DRS Leadership Team and District Leadership Coaches are piloting improvement areas in current districts being served.

*TRANSFORMATION (CARES): AN INTENSIVE INTERVENTION FUNDING\**

ESSER/CARES FEDERAL FUNDING (TO DATE)		
2020-2022	Positions: School Leadership Coach (14)	\$ 4,528,800
	Contracts: District Leadership Coach (3) Instructional Leadership Pilot (NC ILA)	
2022-2023	Positions: School Leadership Coach (14)	\$ 2,993,290
	Contracts: District Leadership Coach (3)	
2022-2024	Positions: School Leadership Coach (14)	\$18,993,290
	Contracts: District Leadership Coach (4)	
	Instructional Leadership (NC ILA) Pilot Yr 2	
	Instructional Leadership (NC ILA) Pilot Yr 3	
	NC ILA Statewide Yr 1	
	NC ILA Statewide Yr 2	
	Flexible Improvement/Intervention Grants	
	Positions: DLC, SLC, IC (6)	
	Positions: School Instructional Coach (8)	
		\$ 2,639,311
		\$ 2,535,776

*\*As of the date of this report, funding for the initial fourteen time-limited positions have been secured until September 2024. Session Law 2021-180 Senate Bill 105 stipulated 20 positions to be created with \$2,000,000 dollars for funding. The Department has covered deficits for all 20 positions by using administrative ESSER II funds. To complete the model as designed, the Department has used additional ESSER III funds to secure positions needed for classroom level support.*

## *Recommendations for Additional School Improvement Legislation*

- Fully fund the Transformation (CARES) Intensive Intervention Pilot. The CARES pilot is based on a coaching model at each level of school governance. Currently, there are 28 coaches assigned to 81 schools in 24 districts. The model is based on the evidence-based TALAS model deployed by the Department from 2010-2015. The Transformation Model within District & Regional Support is the highest level of intervention within DPI. It requires a formal partnership to identify and remedy root cause(s), develop highly focused incremental action steps with performance measures and clearly monitored plans for improved governance.
- The Office of District & Regional Support would like to add 4 Comprehensive Support Specialists to assist schools in strengthening their continuous improvement processes. Our work with executing §115C-105.37 has shown a great need as the 2021-2022 low performing school count has almost doubled. Adding 4 of these consultants will give all schools the support they need.
- Change date requirement for this report. The data needed for this report is more readily available after the December submission of School Improvement Plans. A date change will allow a more accurate picture of the progress of schools and districts designated low performing.
- Principal Recruitment Supplement--§115C-285.1 is managed by District & Regional Support. The program provides recruitment supplements to highly effective principals who move to high-needs schools. We recommend alignment to § 115C-105.39 which outlines removal of school principals for two years of non-performance. Our recommendation is to shift from a fixed number of principals bonuses (40) to a fluid availability of the funds that can match the needs presented in the state. This bonus could be a recruitment tool for superintendents to use when executing § 115C-105.39.
- Increase local board accountability. While the requirements in Part 3 of Chapter 115C of the General Statutes mention local school boards, there are no accountability measures or improvement steps for this integral part of school governance. Recommendation: Local school boards would be strengthened by: (1) Board Chair, Vice Chair, and Superintendent participating in mandatory training about the legalities of being a chronically low performing district/school; (2) Implementing a continual monitoring process that describes local board action after the assignment of an assistance team to ensure continued progress; (3) Incorporate local school board training series, coaching, support, and self-evaluation into model of support for chronically low performing districts/schools; (4) Noncompliance in training and continual monitoring process could result in suspension of duties as a local board member and loss of funding for district
- Allow Assistance Teams the ability to recommend to State Board of Education the suspension of any powers and duties of the local board of education that the State Board considers are necessary or appropriate to improve student performance in the local school administrative unit while leaving the superintendent employment intact.
- Allow Assistance Teams to create a support “clustering” network for districts that allow for the regional hiring of highly qualified individuals in the areas of human resources and finance. This would allow the pooling of human capital in hard-to-staff areas of the state.
- As a result of noncompliance with the State Assistance Team, an interim superintendent can be appointed. Based on the CARES initiative pilot, we would strengthen legislation by:
  - Extending autonomy of interim superintendent to hire, fire, and enter into agreements to improve student achievement
  - Defining interim appointment as not more than 3 years

- Requiring transition plan crafted by local board, interim superintendent, and Assistance Team Lead approved by State Board of Education
- Defining role of local board of education, interim superintendent, Assistance Team in hiring of new superintendent

## Appendix

### ***2021-2022 Low-Performing Schools List***

A low-performing school has a School Performance Grade of 'D' or 'F', and a growth status of 'Met' or 'Not Met.' Schools are sorted by public school unit with charter schools at the end of the list.

Beginning with the 2022–23 school year, Southside Ashpole has been transferred back to Public Schools of Robeson County from the Innovative School District. Therefore, Southside Ashpole is reported under the Public Schools of Robeson County using school code 295300. Questions regarding Southside Ashpole should be directed to Public Schools of Robeson County.

<b>District Name</b>	<b>School Code</b>	<b>School Name</b>	<b>State Board Region</b>	<b>Grade Span</b>	<b>School Performance Grade</b>	<b>EVAAS Growth Status</b>
Alamance-Burlington Schools	010310	Broadview Middle	Piedmont-Triad	06-08	F	Not Met
Alamance-Burlington Schools	010346	B. Everett Jordan Elementary	Piedmont-Triad	0K-05	D	Met
Alamance-Burlington Schools	010350	Graham Middle	Piedmont-Triad	06-08	F	Not Met
Alamance-Burlington Schools	010351	Grove Park Elementary	Piedmont-Triad	PK-05	F	Met
Alamance-Burlington Schools	010354	Harvey R Newlin Elementary	Piedmont-Triad	PK-05	F	Not Met
Alamance-Burlington Schools	010357	Haw River Elementary	Piedmont-Triad	PK-05	F	Met
Alamance-Burlington Schools	010358	Hillcrest Elementary	Piedmont-Triad	PK-05	F	Met
Alamance-Burlington Schools	010360	Hugh M Cummings High	Piedmont-Triad	09-12	D	Not Met
Alamance-Burlington Schools	010364	North Graham Elementary	Piedmont-Triad	PK-05	F	Met
Alamance-Burlington Schools	010380	South Graham Elementary	Piedmont-Triad	PK-05	D	Met
Alamance-Burlington Schools	010394	Turrentine Middle	Piedmont-Triad	06-08	F	Not Met
Alamance-Burlington Schools	010450	Alamance Virtual School	Piedmont-Triad	0K-12	D	Not Met
Alexander County Schools	020306	East Alexander Middle	Northwest	06-08	D	Not Met
Alexander County Schools	020316	Hiddenite Elementary	Northwest	PK-05	D	Not Met
Alexander County Schools	020332	Wittenburg Elementary	Northwest	PK-05	D	Not Met
Alleghany County Schools	030316	Piney Creek Elementary	Northwest	PK-08	D	Not Met
Alleghany County Schools	030320	Sparta Elementary	Northwest	PK-08	D	Not Met
Anson County Schools	040306	Anson High School	Southwest	09-12	D	Not Met
Anson County Schools	040309	Anson Middle	Southwest	06-08	F	Not Met
Anson County Schools	040311	Wadesboro Primary	Southwest	0K-03	F	Met
Anson County Schools	040316	Lilesville Elementary	Southwest	0K-05	D	Met
Anson County Schools	040324	Morven Elementary	Southwest	0K-05	F	Met
Anson County Schools	040330	Wadesboro Elementary	Southwest	04-05	F	Not Met
Asheboro City Schools	761304	Asheboro High	Piedmont-Triad	09-12	D	Not Met
Asheboro City Schools	761308	South Asheboro Middle	Piedmont-Triad	06-08	D	Met
Asheboro City Schools	761312	Balfour Elementary	Piedmont-Triad	PK-05	D	Met
Asheboro City Schools	761320	Charles W McCrary Elementary	Piedmont-Triad	0K-05	F	Not Met
Asheboro City Schools	761332	Lindley Park Elementary	Piedmont-Triad	0K-05	D	Met



District Name	School Code	School Name	State Board Region	Grade Span	School Performance Grade	EVAAS Growth Status
Asheboro City Schools	761336	North Asheboro Middle	Piedmont-Triad	06-08	D	Met
Asheville City Schools	111304	Hall Fletcher Elementary	Western	PK-05	D	Met
Asheville City Schools	111307	Asheville Primary	Western	PK-04	D	Not Met
Avery County Schools	060318	Avery Middle	Northwest	06-08	D	Not Met
Avery County Schools	060328	Newland Elementary	Northwest	PK-05	D	Met
Avery County Schools	060332	Riverside Elementary	Northwest	PK-05	D	Met
Beaufort County Schools	070325	Chocowinity Middle	Northeast	05-08	D	Not Met
Beaufort County Schools	070327	John C Tayloe Elementary	Northeast	02-03	D	Met
Beaufort County Schools	070328	John Small Elementary	Northeast	04-05	D	Not Met
Beaufort County Schools	070329	Northeast Elementary	Northeast	PK-08	D	Met
Beaufort County Schools	070338	P S Jones Middle	Northeast	06-08	D	Not Met
Beaufort County Schools	070340	S W Snowden Elementary	Northeast	PK-08	D	Met
Beaufort County Schools	070342	Washington High	Northeast	09-12	D	Not Met
Bertie County Schools	080312	Bertie High	Northeast	09-12	D	Not Met
Bertie County Schools	080314	Bertie Middle	Northeast	06-08	D	Met
Bertie County Schools	080356	West Bertie Elementary	Northeast	PK-05	D	Met
Bertie County Schools	080360	Colerain Elementary	Northeast	PK-05	D	Met
Bladen County Schools	090317	Bladenboro Primary	Sandhills	PK-04	D	Not Met
Bladen County Schools	090318	Bladen Lakes Primary	Sandhills	PK-04	D	Met
Bladen County Schools	090324	Dublin Primary	Sandhills	PK-04	D	Not Met
Bladen County Schools	090332	Elizabethtown Middle	Sandhills	05-08	F	Not Met
Bladen County Schools	090333	Elizabethtown Primary	Sandhills	PK-04	F	Not Met
Bladen County Schools	090365	Tar Heel Middle	Sandhills	05-08	D	Met
Brunswick County Schools	100304	Bolivia Elementary	Southeast	PK-05	D	Not Met
Brunswick County Schools	100316	Leland Middle	Southeast	06-08	D	Not Met
Brunswick County Schools	100320	Lincoln Elementary	Southeast	0K-05	D	Not Met
Brunswick County Schools	100332	Shallotte Middle	Southeast	06-08	D	Not Met
Brunswick County Schools	100341	Town Creek Middle	Southeast	06-08	D	Not Met
Buncombe County Schools	110306	Reynolds Middle	Western	06-08	D	Not Met
Buncombe County Schools	110338	Owen Middle	Western	06-08	D	Not Met
Buncombe County Schools	110342	Erwin Middle	Western	07-08	D	Not Met
Buncombe County Schools	110348	Emma Elementary	Western	0K-04	D	Met
Buncombe County Schools	110372	Johnston Elementary	Western	0K-04	F	Met
Buncombe County Schools	110376	Leicester Elementary	Western	0K-04	D	Met
Buncombe County Schools	110384	Oakley Elementary	Western	0K-05	D	Met
Buncombe County Schools	110401	Enka Middle	Western	07-08	D	Not Met
Buncombe County Schools	110408	Sand Hill-Venable Elem	Western	0K-04	D	Met
Buncombe County Schools	110410	Avery's Creek Elementary	Western	0K-04	D	Met
Buncombe County Schools	110412	Williams Elementary	Western	0K-05	D	Not Met
Buncombe County Schools	110444	Woodfin Elementary	Western	0K-05	F	Not Met

District Name	School Code	School Name	State Board Region	Grade Span	School Performance Grade	EVAAS Growth Status
Buncombe County Schools	110451	Eblen Intermediate	Western	05-06	D	Met
Burke County Schools	120316	Forest Hill Elementary	Northwest	PK-05	D	Met
Burke County Schools	120338	Hildebran Elementary	Northwest	PK-05	D	Met
Burke County Schools	120340	Hillcrest Elementary	Northwest	PK-05	D	Met
Burke County Schools	120354	Mountain View Elementary	Northwest	PK-05	D	Met
Burke County Schools	120368	Ray Childers Elementary	Northwest	PK-05	D	Met
Burke County Schools	120390	Walter R Johnson Middle	Northwest	06-08	D	Not Met
Cabarrus County Schools	130313	Concord Middle	Southwest	06-08	D	Met
Cabarrus County Schools	130318	C C Griffin Middle	Southwest	06-08	D	Not Met
Cabarrus County Schools	130329	Rocky River Elementary	Southwest	PK-05	D	Met
Cabarrus County Schools	130339	West Cabarrus High	Southwest	09-12	D	Not Met
Cabarrus County Schools	130340	Winecoff Elementary	Southwest	PK-05	D	Met
Cabarrus County Schools	130342	W M Irvin Elementary	Southwest	PK-05	D	Met
Cabarrus County Schools	130355	Harold E. Winkler Middle	Southwest	06-08	D	Not Met
Caldwell County Schools	140312	Davenport A+ School	Northwest	PK-05	D	Met
Caldwell County Schools	140316	Dudley Shoals Elementary	Northwest	PK-05	D	Not Met
Caldwell County Schools	140324	Gamewell Elementary	Northwest	PK-05	D	Met
Caldwell County Schools	140332	Gamewell Middle	Northwest	06-08	D	Met
Caldwell County Schools	140344	Happy Valley Elementary	Northwest	PK-08	D	Met
Caldwell County Schools	140360	Kings Creek Elementary	Northwest	PK-08	D	Not Met
Caldwell County Schools	140368	William Lenoir Middle	Northwest	06-08	D	Not Met
Caldwell County Schools	140384	Sawmills Elementary	Northwest	PK-05	D	Not Met
Caldwell County Schools	140390	West Caldwell High	Northwest	09-12	D	Not Met
Caldwell County Schools	140392	West Lenoir Elementary	Northwest	03-05	F	Not Met
Caldwell County Schools	140396	Whitnel Elementary	Northwest	PK-05	D	Met
Caswell County Schools	170316	Bartlett Yancey High	Piedmont-Triad	09-12	D	Not Met
Caswell County Schools	170338	N L Dillard Middle	Piedmont-Triad	06-08	D	Met
Caswell County Schools	170339	Oakwood Elementary	Piedmont-Triad	PK-05	D	Met
Caswell County Schools	170342	South Elementary	Piedmont-Triad	PK-05	D	Met
Catawba County Schools	180312	Banoak Elementary	Northwest	0K-06	D	Not Met
Catawba County Schools	180316	Blackburn Elementary	Northwest	0K-06	D	Not Met
Catawba County Schools	180343	Lyle Creek Elementary	Northwest	PK-06	D	Not Met
Catawba County Schools	180344	Maiden Elementary	Northwest	PK-06	D	Not Met
Catawba County Schools	180360	Oxford Elementary	Northwest	PK-06	D	Met
Catawba County Schools	180364	River Bend Middle	Northwest	07-08	D	Not Met
Catawba County Schools	180372	Saint Stephens Elementary	Northwest	PK-06	D	Met
Catawba County Schools	180388	Webb A Murray Elementary	Northwest	PK-06	D	Not Met
Charlotte-Mecklenburg Schools	600301	Albemarle Road Middle	Southwest	06-08	D	Met

District Name	School Code	School Name	State Board Region	Grade Span	School Performance Grade	EVAAS Growth Status
Charlotte-Mecklenburg Schools	600303	Charlotte East Language Academy	Southwest	0K-08	D	Met
Charlotte-Mecklenburg Schools	600305	J. M. Alexander Middle	Southwest	06-08	F	Not Met
Charlotte-Mecklenburg Schools	600311	Ashley Park PreK-8 School	Southwest	PK-08	F	Met
Charlotte-Mecklenburg Schools	600321	Charlotte-Mecklenburg Virtual Elementary	Southwest	0K-05	F	Not Met
Charlotte-Mecklenburg Schools	600323	Charlotte-Mecklenburg Virtual Middle	Southwest	06-08	F	Not Met
Charlotte-Mecklenburg Schools	600341	Cochrane Collegiate Academy	Southwest	06-12	F	Met
Charlotte-Mecklenburg Schools	600349	Cotswold Elementary	Southwest	03-05	D	Not Met
Charlotte-Mecklenburg Schools	600362	David Cox Road Elementary	Southwest	PK-05	F	Met
Charlotte-Mecklenburg Schools	600364	Military and Global Leadership	Southwest	09-12	D	Not Met
Charlotte-Mecklenburg Schools	600366	Marie G Davis School	Southwest	0K-08	F	Met
Charlotte-Mecklenburg Schools	600374	Druid Hills Academy	Southwest	PK-08	F	Met
Charlotte-Mecklenburg Schools	600397	Garinger High School	Southwest	09-12	D	Not Met
Charlotte-Mecklenburg Schools	600405	Harding University High School	Southwest	09-12	D	Not Met
Charlotte-Mecklenburg Schools	600410	Hickory Grove Elementary	Southwest	PK-05	F	Met
Charlotte-Mecklenburg Schools	600416	Hornets Nest Elementary	Southwest	PK-05	F	Met
Charlotte-Mecklenburg Schools	600422	Huntingtowne Farms Elementary	Southwest	PK-05	D	Met
Charlotte-Mecklenburg Schools	600428	James Martin Middle	Southwest	06-08	F	Not Met
Charlotte-Mecklenburg Schools	600432	Joseph W Grier Academy	Southwest	PK-05	D	Met
Charlotte-Mecklenburg Schools	600434	Kennedy Middle	Southwest	06-08	D	Met
Charlotte-Mecklenburg Schools	600440	Lebanon Road Elementary	Southwest	PK-05	D	Met
Charlotte-Mecklenburg Schools	600446	Mallard Creek Elementary	Southwest	0K-05	D	Met
Charlotte-Mecklenburg Schools	600448	Martin Luther King, Jr Middle	Southwest	06-08	F	Not Met
Charlotte-Mecklenburg Schools	600450	McClintock Middle	Southwest	06-08	D	Met
Charlotte-Mecklenburg Schools	600457	Rocky River High School	Southwest	09-12	D	Not Met
Charlotte-Mecklenburg Schools	600459	Montclair Elementary	Southwest	PK-05	F	Met
Charlotte-Mecklenburg Schools	600462	Mountain Island Lake Academy	Southwest	PK-08	D	Met
Charlotte-Mecklenburg Schools	600463	River Oaks Academy	Southwest	PK-05	F	Not Met
Charlotte-Mecklenburg Schools	600474	Newell Elementary	Southwest	0K-05	F	Not Met
Charlotte-Mecklenburg Schools	600479	Northeast Middle	Southwest	06-08	F	Not Met

District Name	School Code	School Name	State Board Region	Grade Span	School Performance Grade	EVAAS Growth Status
Charlotte-Mecklenburg Schools	600485	Oakdale Elementary	Southwest	0K-05	F	Met
Charlotte-Mecklenburg Schools	600498	Performance Learning Center	Southwest	09-12	F	Met
Charlotte-Mecklenburg Schools	600500	Pineville Elementary	Southwest	0K-05	D	Met
Charlotte-Mecklenburg Schools	600501	Pinewood Elementary	Southwest	PK-05	F	Met
Charlotte-Mecklenburg Schools	600503	Piney Grove Elementary	Southwest	PK-05	F	Met
Charlotte-Mecklenburg Schools	600514	Ranson Middle	Southwest	06-08	F	Not Met
Charlotte-Mecklenburg Schools	600517	Reid Park Academy	Southwest	PK-05	D	Met
Charlotte-Mecklenburg Schools	600518	Ridge Road Middle	Southwest	06-08	D	Not Met
Charlotte-Mecklenburg Schools	600520	Sedgefield Middle	Southwest	06-08	D	Not Met
Charlotte-Mecklenburg Schools	600538	Southwest Middle School	Southwest	06-08	D	Not Met
Charlotte-Mecklenburg Schools	600545	Starmount Academy of Excellence	Southwest	PK-05	F	Met
Charlotte-Mecklenburg Schools	600546	Statesville Road Elementary	Southwest	0K-05	F	Met
Charlotte-Mecklenburg Schools	600549	Steele Creek Elementary	Southwest	0K-05	D	Met
Charlotte-Mecklenburg Schools	600550	Sterling Elementary	Southwest	PK-05	F	Met
Charlotte-Mecklenburg Schools	600565	University Park Creative Arts	Southwest	0K-05	F	Not Met
Charlotte-Mecklenburg Schools	600576	West Charlotte High School	Southwest	09-12	D	Not Met
Charlotte-Mecklenburg Schools	600579	West Mecklenburg High School	Southwest	09-12	D	Not Met
Charlotte-Mecklenburg Schools	600586	Winding Springs Elementary	Southwest	PK-05	D	Met
Charlotte-Mecklenburg Schools	600588	Winget Park Elementary	Southwest	PK-05	D	Met
Charlotte-Mecklenburg Schools	600592	Julius L. Chambers High School	Southwest	09-12	D	Not Met
Charter Schools	00A000	North Carolina Cyber Academy	Virtual	0K-12	D	Not Met
Charter Schools	00B000	NC Virtual Academy	Virtual	0K-12	D	Not Met
Charter Schools	09A000	Paul R. Brown Leadership Academy	Sandhills	06-12	F	Not Met
Charter Schools	09B000	Emereau Bladen	Sandhills	0K-08	D	Not Met
Charter Schools	13B000	Cabarrus Charter Academy	Southwest	0K-12	D	Not Met
Charter Schools	13C000	A.C.E. Academy	Southwest	0K-08	D	Met
Charter Schools	24N000	Classical Charter Schools of Whiteville	Sandhills	0K-08	D	Met
Charter Schools	26C000	The Capitol Encore Academy	Sandhills	0K-08	D	Not Met
Charter Schools	29A000	Davidson Charter Academy	Piedmont-Triad	0K-07	D	Not Met
Charter Schools	32C000	Community School of Digital & Visual Art	North Central	0K-08	D	Met
Charter Schools	32D000	Kestrel Heights School	North Central	0K-08	D	Met
Charter Schools	32H000	Research Triangle Charter	North Central	0K-08	D	Met

District Name	School Code	School Name	State Board Region	Grade Span	School Performance Grade	EVAAS Growth Status
Charter Schools	32M000	Global Scholars Academy	North Central	0K-08	D	Met
Charter Schools	32P000	The Institute Development Young Leaders	North Central	0K-08	D	Met
Charter Schools	32R000	Excelsior Classical Academy	North Central	0K-10	D	Not Met
Charter Schools	34D000	Carter G. Woodson School	Piedmont-Triad	0K-12	F	Met
Charter Schools	35A000	Crosscreek Charter School	North Central	0K-08	D	Met
Charter Schools	35B000	Youngsville Academy	North Central	0K-08	D	Not Met
Charter Schools	36F000	Ridgeview Charter School	Southwest	0K-06	F	Not Met
Charter Schools	36G000	Community Public Charter	Southwest	0K-07	D	Not Met
Charter Schools	41C000	Guilford Preparatory Academy	Piedmont-Triad	0K-08	D	Met
Charter Schools	41L000	Gate City Charter	Piedmont-Triad	0K-08	D	Not Met
Charter Schools	41M000	Next Generation Academy	Piedmont-Triad	0K-05	D	Met
Charter Schools	41N000	The Experiential School of Greensboro	Piedmont-Triad	0K-08	D	Met
Charter Schools	41R000	Summit Creek Academy	Piedmont-Triad	0K-05	D	Met
Charter Schools	42A000	KIPP Halifax College Preparatory	Northeast	0K-08	F	Met
Charter Schools	43D000	Achievement Charter Academy	North Central	0K-05	F	Not Met
Charter Schools	49B000	American Renaissance School	Southwest	0K-08	D	Met
Charter Schools	49D000	Success Institute Charter	Southwest	0K-08	D	Met
Charter Schools	53C000	MINA Charter School of Lee County	North Central	0K-06	F	Met
Charter Schools	54A000	Children's Village Academy	Southeast	0K-08	D	Met
Charter Schools	60K000	Charlotte Secondary	Southwest	06-12	D	Met
Charter Schools	60L000	KIPP Charlotte	Southwest	0K-08	F	Met
Charter Schools	60N000	Aristotle Preparatory Academy	Southwest	0K-08	D	Met
Charter Schools	60P000	Eastside STREAM Academy	Southwest	0K-08	F	Not Met
Charter Schools	60Q000	Invest Collegiate Transform	Southwest	0K-11	D	Met
Charter Schools	61J000	Lakeside Charter Academy	Southwest	0K-08	D	Met
Charter Schools	61K000	United Community School	Southwest	0K-08	D	Met
Charter Schools	61N000	Queen City STEM School	Southwest	0K-11	D	Not Met
Charter Schools	61P000	VERITAS Community School, CFA	Southwest	0K-08	F	Met
Charter Schools	61Q000	Mallard Creek STEM Academy	Southwest	0K-08	D	Not Met
Charter Schools	61T000	Movement Charter School	Southwest	0K-06	D	Met
Charter Schools	61U000	UpROAR Leadership Academy	Southwest	05-12	F	Met
Charter Schools	61Y000	Steele Creek Preparatory Academy	Southwest	0K-08	D	Met
Charter Schools	62A000	Tillery Charter Academy	Sandhills	0K-04	F	Met
Charter Schools	62J000	Southwest Charlotte STEM Academy	Southwest	0K-08	D	Met
Charter Schools	63C000	Moore Montessori Community School	Sandhills	0K-05	D	Not Met

District Name	School Code	School Name	State Board Region	Grade Span	School Performance Grade	EVAAS Growth Status
Charter Schools	64A000	Rocky Mount Preparatory	North Central	0K-12	F	Not Met
Charter Schools	65B000	Wilmington Preparatory Academy	Southeast	0K-08	D	Met
Charter Schools	65C000	Classical Charter Schools of Wilmington	Southeast	0K-05	D	Met
Charter Schools	65F000	American Leadership Academy-Coastal	Southeast	0K-09	D	Not Met
Charter Schools	65G000	Girls Leadership Academy of Wilmington	Southeast	06-11	D	Met
Charter Schools	65H000	Wilmington School of the Arts	Southeast	0K-05	F	Met
Charter Schools	67B000	Z.E.C.A. School of Arts and Technology	Southeast	0K-08	F	Not Met
Charter Schools	69A000	Arapahoe Charter School	Southeast	0K-12	D	Not Met
Charter Schools	76A000	Uwharrie Charter Academy	Piedmont-Triad	0K-12	D	Not Met
Charter Schools	79A000	Bethany Community School	Piedmont-Triad	06-12	D	Not Met
Charter Schools	90D000	Monroe Charter Academy	Southwest	0K-05	F	Met
Charter Schools	90F000	Apprentice Academy High School	Southwest	09-12	D	Not Met
Charter Schools	92P000	Southern Wake Academy	North Central	06-12	D	Not Met
Charter Schools	93A000	Haliwa-Saponi Tribal School	North Central	0K-12	F	Not Met
Charter Schools	93J000	RISE Southeast Raleigh Charter	North Central	0K-07	F	Met
Charter Schools	93Q000	Carolina Charter Academy	North Central	0K-08	D	Not Met
Charter Schools	93R000	Raleigh Oak Charter	North Central	0K-07	D	Met
Charter Schools	93T000	Cardinal Charter Acad at Wendell Falls	North Central	0K-07	D	Not Met
Charter Schools	94A000	Pocosin Innovative Charter	Northeast	0K-08	D	Not Met
Charter Schools	96F000	Wayne Preparatory Academy	Southeast	0K-11	D	Met
Chatham County Schools	190308	Bonlee School	North Central	0K-08	D	Met
Chatham County Schools	190312	Chatham Middle	North Central	06-08	D	Met
Chatham County Schools	190336	Jordan Matthews High	North Central	09-12	D	Not Met
Chatham County Schools	190350	Siler City Elementary	North Central	PK-05	D	Met
Cherokee County Schools	200304	Andrews Elementary	Western	PK-05	D	Met
Cherokee County Schools	200320	Martins Creek Elementary/Mid	Western	PK-08	D	Met
Cleveland County Schools	230323	Cleveland Innovation	Southwest	0K-12	D	Not Met
Cleveland County Schools	230336	Shelby Intermediate	Southwest	05-06	F	Not Met
Cleveland County Schools	230342	Graham Elementary	Southwest	PK-04	F	Met
Cleveland County Schools	230362	Shelby Middle	Southwest	07-08	D	Met
Cleveland County Schools	230368	Township Three Elementary	Southwest	PK-05	D	Met
Cleveland County Schools	230376	Washington Elementary	Southwest	PK-05	D	Not Met
Columbus County Schools	240308	Acme Delco Elementary	Sandhills	PK-06	D	Met
Columbus County Schools	240328	Cerro Gordo Elementary	Sandhills	PK-08	D	Not Met
Columbus County Schools	240332	Chadbourn Elementary	Sandhills	PK-05	D	Not Met

District Name	School Code	School Name	State Board Region	Grade Span	School Performance Grade	EVAAS Growth Status
Columbus County Schools	240334	East Columbus Junior-Senior High	Sandhills	07-12	D	Not Met
Columbus County Schools	240344	Evergreen Elementary	Sandhills	PK-08	F	Not Met
Columbus County Schools	240354	Hallsboro-Artesia Elementary	Sandhills	PK-06	D	Not Met
Columbus County Schools	240368	Nakina Middle	Sandhills	05-08	D	Not Met
Columbus County Schools	240372	Tabor City Elementary	Sandhills	PK-05	D	Not Met
Columbus County Schools	240376	Tabor City Middle	Sandhills	06-08	D	Met
Columbus County Schools	240388	Williams Township	Sandhills	PK-08	D	Not Met
Craven County Schools	250344	Havelock Middle	Southeast	06-08	D	Not Met
Craven County Schools	250348	J T Barber Elementary	Southeast	PK-05	F	Met
Craven County Schools	250360	Oaks Road Academy	Southeast	PK-05	F	Not Met
Craven County Schools	250362	Roger Bell New Tech Academy	Southeast	PK-05	D	Met
Craven County Schools	250372	West Craven High	Southeast	09-12	D	Not Met
Craven County Schools	250376	West Craven Middle	Southeast	06-08	D	Met
Craven County Schools	250379	Craven Virtual Academy	Southeast	03-12	D	Not Met
Cumberland County Schools	260308	Ashley Elementary	Sandhills	03-05	D	Met
Cumberland County Schools	260316	Lillian Black Elementary	Sandhills	0K-05	D	Met
Cumberland County Schools	260322	Douglas Byrd High	Sandhills	09-12	D	Met
Cumberland County Schools	260326	Elizabeth M Cashwell Elementary	Sandhills	PK-05	D	Met
Cumberland County Schools	260340	College Lakes Elementary	Sandhills	0K-05	D	Met
Cumberland County Schools	260358	Luther Nick Jeralds Middle	Sandhills	06-08	D	Met
Cumberland County Schools	260365	R Max Abbott Middle	Sandhills	06-08	D	Met
Cumberland County Schools	260368	Hope Mills Middle	Sandhills	06-08	D	Met
Cumberland County Schools	260386	Margaret Willis Elementary	Sandhills	PK-05	F	Met
Cumberland County Schools	260400	Montclair Elementary	Sandhills	PK-05	D	Met
Cumberland County Schools	260404	William H Owen Elementary	Sandhills	PK-05	D	Met
Cumberland County Schools	260425	South View Middle	Sandhills	06-08	D	Met
Cumberland County Schools	260428	Spring Lake Middle	Sandhills	06-08	F	Not Met
Cumberland County Schools	260440	Sunnyside Elementary	Sandhills	0K-05	D	Met
Cumberland County Schools	260444	Teresa C Berrien Elementary	Sandhills	0K-05	F	Met
Cumberland County Schools	260455	Westover High	Sandhills	09-12	D	Not Met
Cumberland County Schools	260460	Cumberland Academy 6-12 Virtual School	Sandhills	06-12	D	Not Met
Cumberland County Schools	260461	Cumberland Academy K-5 Virtual School	Sandhills	0K-05	F	Not Met
Currituck County Schools	270304	Central Elementary	Northeast	PK-05	D	Met
Dare County Schools	280312	Manteo Elementary School	Northeast	PK-05	D	Met
Davidson County Schools	290302	Brier Creek Elementary	Piedmont-Triad	PK-05	D	Met
Davidson County Schools	290307	Southmont Elementary	Piedmont-Triad	PK-05	D	Not Met
Davidson County Schools	290320	Denton Elementary	Piedmont-Triad	PK-05	D	Met
Davidson County Schools	290322	E Lawson Brown Middle	Piedmont-Triad	06-08	D	Not Met

District Name	School Code	School Name	State Board Region	Grade Span	School Performance Grade	EVAAS Growth Status
Davidson County Schools	290328	Fair Grove Elementary	Piedmont-Triad	PK-05	D	Met
Davidson County Schools	290364	Silver Valley Elementary	Piedmont-Triad	PK-05	F	Not Met
Davidson County Schools	290367	South Davidson Middle	Piedmont-Triad	06-08	D	Not Met
Davidson County Schools	290375	Tyro Elementary	Piedmont-Triad	PK-05	D	Met
Davie County Schools	300320	Mocksville Elementary	Piedmont-Triad	PK-05	D	Not Met
Davie County Schools	300330	South Davie Middle	Piedmont-Triad	06-08	D	Not Met
Duplin County Schools	310308	Beulaville Elementary	Southeast	PK-08	D	Not Met
Duplin County Schools	310336	Warsaw Elementary	Southeast	PK-08	F	Met
Duplin County Schools	310352	James Kenan High	Southeast	09-12	D	Not Met
Duplin County Schools	310364	North Duplin Jr Sr High	Southeast	07-12	D	Not Met
Duplin County Schools	310384	Rose Hill-Magnolia Elementary	Southeast	PK-08	F	Met
Duplin County Schools	310392	Wallace-Rose Hill High	Southeast	09-12	D	Not Met
Durham Public Schools	320314	The School for Creative Studies	North Central	06-12	D	Met
Durham Public Schools	320324	Hillandale Elementary	North Central	PK-05	D	Met
Durham Public Schools	320332	Forest View Elementary	North Central	0K-05	D	Met
Durham Public Schools	320339	Lakewood Elementary	North Central	PK-05	F	Met
Durham Public Schools	320355	Neal Middle	North Central	06-08	F	Met
Durham Public Schools	320356	Northern High	North Central	09-12	D	Not Met
Durham Public Schools	320362	Parkwood Elementary	North Central	PK-05	D	Met
Durham Public Schools	320368	Southern School of Energy and Sustainabi	North Central	09-12	D	Not Met
Durham Public Schools	320374	C C Spaulding Elementary	North Central	PK-05	F	Not Met
Durham Public Schools	320388	W G Pearson Elementary	North Central	PK-05	D	Met
Durham Public Schools	320400	Y E Smith Elementary	North Central	PK-05	D	Met
Durham Public Schools	320401	Ignite Online Academy	North Central	0K-12	D	Not Met
Edgecombe County Public School	330304	G W Bulluck Elementary	North Central	PK-05	F	Not Met
Edgecombe County Public School	330312	Coker-Wimberly Elementary	North Central	PK-05	D	Met
Edgecombe County Public School	330328	North Edgecombe High	North Central	09-12	D	Met
Edgecombe County Public School	330334	Princeville Elementary	North Central	PK-05	F	Not Met
Edgecombe County Public School	330340	South Edgecombe Middle	North Central	06-08	D	Met
Edgecombe County Public School	330344	W A Pattillo Middle	North Central	06-08	F	Not Met
Edgecombe County Public School	330348	West Edgecombe Middle	North Central	06-08	D	Met



District Name	School Code	School Name	State Board Region	Grade Span	School Performance Grade	EVAAS Growth Status
Edgecombe County Public School	330354	Stocks Elementary	North Central	PK-05	F	Not Met
Edgecombe County Public School	330358	Tarboro High	North Central	09-12	D	Met
Edgecombe County Public School	330360	Martin Millennium Academy	North Central	0K-08	F	Not Met
Elkin City Schools	861316	Global E-Learning Academy	Piedmont-Triad	0K-12	D	Met
Forsyth County Schools	340308	Ashley Academy	Piedmont-Triad	PK-05	F	Met
Forsyth County Schools	340314	Bolton Elementary	Piedmont-Triad	PK-05	D	Met
Forsyth County Schools	340320	Brunson Elementary	Piedmont-Triad	PK-05	D	Met
Forsyth County Schools	340326	Caleb's Creek Elementary	Piedmont-Triad	PK-05	D	Met
Forsyth County Schools	340330	Carver High	Piedmont-Triad	09-12	D	Met
Forsyth County Schools	340364	East Forsyth High	Piedmont-Triad	09-12	D	Not Met
Forsyth County Schools	340366	East Forsyth Middle School	Piedmont-Triad	06-08	F	Met
Forsyth County Schools	340372	Flat Rock Middle	Piedmont-Triad	06-08	F	Not Met
Forsyth County Schools	340376	Forest Park Elementary	Piedmont-Triad	PK-05	F	Not Met
Forsyth County Schools	340382	Robert B Glenn High School	Piedmont-Triad	09-12	D	Not Met
Forsyth County Schools	340384	Griffith Elementary	Piedmont-Triad	PK-05	D	Met
Forsyth County Schools	340390	Hall-Woodward Elementary	Piedmont-Triad	PK-05	F	Not Met
Forsyth County Schools	340398	Virtual Academy	Piedmont-Triad	PK-12	F	Not Met
Forsyth County Schools	340424	Kimberley Park Elementary	Piedmont-Triad	PK-05	F	Met
Forsyth County Schools	340426	Kimmel Farm Elementary	Piedmont-Triad	PK-05	D	Met
Forsyth County Schools	340430	Diggs-Latham Elementary	Piedmont-Triad	PK-05	F	Met
Forsyth County Schools	340448	Mineral Springs Elementary	Piedmont-Triad	PK-05	F	Met
Forsyth County Schools	340452	Mineral Springs Middle	Piedmont-Triad	06-08	F	Not Met
Forsyth County Schools	340453	Moore Magnet Elementary	Piedmont-Triad	PK-05	D	Met
Forsyth County Schools	340460	North Forsyth High	Piedmont-Triad	09-12	D	Not Met
Forsyth County Schools	340462	North Hills Elementary	Piedmont-Triad	PK-05	F	Met
Forsyth County Schools	340464	Northwest Middle	Piedmont-Triad	06-08	F	Met
Forsyth County Schools	340480	Paisley IB Magnet School	Piedmont-Triad	06-10	D	Not Met
Forsyth County Schools	340486	Parkland High	Piedmont-Triad	09-12	D	Not Met
Forsyth County Schools	340488	J F Kennedy High	Piedmont-Triad	06-12	D	Met

District Name	School Code	School Name	State Board Region	Grade Span	School Performance Grade	EVAAS Growth Status
Forsyth County Schools	340492	Philo-Hill Magnet Academy	Piedmont-Triad	06-08	F	Not Met
Forsyth County Schools	340514	Smith Farm Elementary	Piedmont-Triad	PK-05	F	Met
Forsyth County Schools	340516	Southeast Middle	Piedmont-Triad	06-08	F	Not Met
Forsyth County Schools	340520	South Fork Elementary	Piedmont-Triad	PK-05	F	Met
Forsyth County Schools	340530	Speas Elementary	Piedmont-Triad	PK-05	D	Met
Forsyth County Schools	340532	Union Cross Traditional Acad	Piedmont-Triad	PK-05	D	Met
Forsyth County Schools	340540	Walkertown Elementary	Piedmont-Triad	PK-05	D	Met
Forsyth County Schools	340548	Ward Elementary	Piedmont-Triad	PK-05	F	Not Met
Forsyth County Schools	340564	Wiley Magnet Middle	Piedmont-Triad	06-08	D	Not Met
Forsyth County Schools	340568	Winston-Salem Preparatory Acad	Piedmont-Triad	06-12	F	Met
Franklin County Schools	350304	Bunn Elementary	North Central	PK-05	D	Met
Franklin County Schools	350310	Bunn Middle	North Central	06-08	D	Met
Franklin County Schools	350324	Franklinton Middle	North Central	06-08	F	Not Met
Gaston County Schools	360332	Bessemer City Central Elem	Southwest	03-05	D	Met
Gaston County Schools	360336	Bessemer City High	Southwest	09-12	D	Not Met
Gaston County Schools	360339	W B Beam Intermediate School	Southwest	04-05	D	Not Met
Gaston County Schools	360344	Carr Elementary	Southwest	PK-05	D	Not Met
Gaston County Schools	360352	Chapel Grove Elementary	Southwest	PK-05	D	Not Met
Gaston County Schools	360376	Costner Elementary	Southwest	PK-05	D	Not Met
Gaston County Schools	360392	Edward D Sadler Jr Elementary School	Southwest	PK-05	D	Met
Gaston County Schools	360400	Gardner Park Elementary	Southwest	PK-05	D	Met
Gaston County Schools	360408	W P Grier Middle School	Southwest	06-08	F	Not Met
Gaston County Schools	360426	Holbrook Middle	Southwest	06-08	D	Met
Gaston County Schools	360428	Hunter Huss High	Southwest	09-12	D	Not Met
Gaston County Schools	360432	Kiser Elementary	Southwest	03-05	D	Not Met
Gaston County Schools	360436	Bessemer City Middle	Southwest	06-08	D	Met
Gaston County Schools	360438	Lingerfeldt Elementary	Southwest	PK-05	F	Not Met
Gaston County Schools	360470	North Gaston High	Southwest	09-12	D	Not Met
Gaston County Schools	360480	Pleasant Ridge Elementary	Southwest	PK-05	D	Met
Gaston County Schools	360488	Robinson Elementary	Southwest	PK-05	D	Met
Gaston County Schools	360490	Sherwood Elementary	Southwest	PK-05	F	Not Met
Gaston County Schools	360492	H H Beam Elementary	Southwest	PK-05	F	Met
Gaston County Schools	360504	Tryon Elementary	Southwest	PK-05	D	Met
Gaston County Schools	360514	W C Friday Middle School	Southwest	06-08	D	Not Met
Gaston County Schools	360520	Woodhill Elementary	Southwest	PK-05	F	Met
Gaston County Schools	360526	York Chester Middle	Southwest	06-08	D	Met

District Name	School Code	School Name	State Board Region	Grade Span	School Performance Grade	EVAAS Growth Status
Gaston County Schools	360550	Gaston Virtual Academy	Southwest	0K-12	D	Not Met
Gates County Schools	370304	Buckland Elementary	Northeast	0K-05	D	Met
Graham County Schools	380306	Robbinsville Elementary	Western	PK-05	D	Not Met
Graham County Schools	380310	Robbinsville Middle	Western	06-08	D	Not Met
Granville County Schools	390309	Butner-Stem Middle	North Central	06-08	D	Met
Granville County Schools	390312	C. G. Credle Elementary	North Central	PK-05	D	Met
Granville County Schools	390316	Creedmoor Elementary	North Central	PK-05	D	Met
Granville County Schools	390322	Granville Central High	North Central	09-12	D	Not Met
Granville County Schools	390324	J. F. Webb High	North Central	09-12	D	Not Met
Granville County Schools	390333	Mount Energy Elementary	North Central	PK-05	D	Met
Granville County Schools	390334	Northern Granville Middle	North Central	06-08	D	Met
Granville County Schools	390352	South Granville High	North Central	09-12	D	Not Met
Granville County Schools	390364	West Oxford Elementary	North Central	PK-05	D	Met
Greene County Schools	400312	Greene County Middle	Southeast	06-08	F	Not Met
Greene County Schools	400318	Greene County Intermediate	Southeast	04-05	D	Met
Greene County Schools	400332	West Greene Elementary	Southeast	02-03	D	Met
Guilford County Schools	410301	Guilford eLearning Virtual School	Piedmont-Triad	0K-05	F	Not Met
Guilford County Schools	410302	Guilford eLearning University Prep	Piedmont-Triad	06-08	F	Not Met
Guilford County Schools	410307	Edwin A Alderman Elementary	Piedmont-Triad	PK-05	D	Not Met
Guilford County Schools	410310	Allen Jay Elementary	Piedmont-Triad	PK-05	D	Not Met
Guilford County Schools	410311	Allen Jay Middle - A Preparatory Academy	Piedmont-Triad	05-08	D	Not Met
Guilford County Schools	410313	Southern Guilford Middle	Piedmont-Triad	06-08	F	Not Met
Guilford County Schools	410316	Allen Middle	Piedmont-Triad	06-08	F	Not Met
Guilford County Schools	410319	T Wingate Andrews High	Piedmont-Triad	09-12	D	Not Met
Guilford County Schools	410325	Swann Middle School	Piedmont-Triad	06-08	F	Not Met
Guilford County Schools	410328	Bessemer Elementary	Piedmont-Triad	PK-05	F	Met
Guilford County Schools	410331	Bluford Elementary	Piedmont-Triad	0K-05	D	Met
Guilford County Schools	410334	Brightwood Elementary	Piedmont-Triad	PK-05	D	Met
Guilford County Schools	410340	Monticello-Brown Summit Elem	Piedmont-Triad	PK-05	D	Met
Guilford County Schools	410349	Cesar Cone Elementary	Piedmont-Triad	PK-05	F	Met
Guilford County Schools	410355	James B Dudley High	Piedmont-Triad	09-12	D	Not Met

District Name	School Code	School Name	State Board Region	Grade Span	School Performance Grade	EVAAS Growth Status
Guilford County Schools	410358	Eastern Guilford High	Piedmont-Triad	09-12	D	Not Met
Guilford County Schools	410364	Fairview Elementary	Piedmont-Triad	PK-05	D	Met
Guilford County Schools	410366	Waldo C Falkener Sr Elementary	Piedmont-Triad	PK-05	F	Met
Guilford County Schools	410367	Ferndale Middle	Piedmont-Triad	06-08	F	Not Met
Guilford County Schools	410376	Cyrus P Frazier Elementary	Piedmont-Triad	PK-05	D	Met
Guilford County Schools	410385	Gillespie Park Elementary	Piedmont-Triad	PK-05	F	Not Met
Guilford County Schools	410391	Penn-Griffin Schools	Piedmont-Triad	06-12	D	Not Met
Guilford County Schools	410397	Western Guilford Middle	Piedmont-Triad	06-08	D	Not Met
Guilford County Schools	410400	Guilford Elementary	Piedmont-Triad	PK-05	D	Not Met
Guilford County Schools	410406	High Point Central High	Piedmont-Triad	09-12	D	Not Met
Guilford County Schools	410409	Hunter Elementary	Piedmont-Triad	PK-05	D	Met
Guilford County Schools	410412	Irving Park Elementary	Piedmont-Triad	PK-05	D	Not Met
Guilford County Schools	410421	Jamestown Middle	Piedmont-Triad	06-08	D	Not Met
Guilford County Schools	410427	Johnson Street Global Studies	Piedmont-Triad	0K-08	D	Met
Guilford County Schools	410436	James Y Joyner Elementary	Piedmont-Triad	PK-05	D	Not Met
Guilford County Schools	410439	Kirkman Park Elementary	Piedmont-Triad	PK-05	D	Not Met
Guilford County Schools	410454	Madison Elementary	Piedmont-Triad	0K-05	F	Not Met
Guilford County Schools	410460	Eastern Guilford Middle	Piedmont-Triad	06-08	F	Not Met
Guilford County Schools	410461	McLeansville Elementary	Piedmont-Triad	PK-05	D	Met
Guilford County Schools	410462	Ronald E. McNair Elementary	Piedmont-Triad	PK-05	D	Not Met
Guilford County Schools	410469	Montlieu Academy of Technology	Piedmont-Triad	PK-05	D	Met
Guilford County Schools	410478	Murphey Traditional Academy	Piedmont-Triad	0K-05	D	Met
Guilford County Schools	410484	Northeast Guilford High	Piedmont-Triad	09-12	D	Not Met
Guilford County Schools	410487	Northeast Guilford Middle	Piedmont-Triad	06-08	F	Met
Guilford County Schools	410496	Northwood Elementary	Piedmont-Triad	PK-05	D	Met
Guilford County Schools	410499	Oak Hill Elementary	Piedmont-Triad	PK-05	F	Not Met
Guilford County Schools	410505	Oak View Elementary	Piedmont-Triad	PK-05	D	Not Met
Guilford County Schools	410511	Parkview Village Elementary	Piedmont-Triad	PK-05	D	Met
Guilford County Schools	410514	Clara J Peck Elementary	Piedmont-Triad	PK-05	D	Met

District Name	School Code	School Name	State Board Region	Grade Span	School Performance Grade	EVAAS Growth Status
Guilford County Schools	410530	Reedy Fork Elementary	Piedmont-Triad	PK-05	D	Met
Guilford County Schools	410532	Rankin Elementary	Piedmont-Triad	PK-05	D	Not Met
Guilford County Schools	410535	Sedalia Elementary	Piedmont-Triad	PK-05	D	Met
Guilford County Schools	410538	Sedgefield Elementary	Piedmont-Triad	PK-05	F	Not Met
Guilford County Schools	410541	Shadybrook Elementary	Piedmont-Triad	PK-05	D	Not Met
Guilford County Schools	410542	George C Simkins Jr Elementary	Piedmont-Triad	PK-05	F	Not Met
Guilford County Schools	410550	Southeast Guilford Middle	Piedmont-Triad	06-08	D	Not Met
Guilford County Schools	410556	Southern Guilford High	Piedmont-Triad	09-12	D	Not Met
Guilford County Schools	410565	Southwest Guilford Middle	Piedmont-Triad	06-08	D	Not Met
Guilford County Schools	410577	Sumner Elementary	Piedmont-Triad	0K-05	D	Not Met
Guilford County Schools	410578	Triangle Lake Montessori Elem	Piedmont-Triad	PK-05	D	Met
Guilford County Schools	410580	Union Hill Elementary	Piedmont-Triad	PK-05	D	Met
Guilford County Schools	410583	Vandalia Elementary	Piedmont-Triad	PK-05	F	Not Met
Guilford County Schools	410586	Washington Elementary	Piedmont-Triad	PK-05	D	Met
Guilford County Schools	410598	Wiley Accel/Enrichment	Piedmont-Triad	PK-05	F	Met
Halifax County Schools	420324	Enfield Middle S.T.E.A.M. Academy	Northeast	06-08	F	Met
Halifax County Schools	420328	Everetts Elementary S.T.E.M. Academy	Northeast	PK-05	F	Not Met
Halifax County Schools	420336	Hollister Elementary Leadership Academy	Northeast	PK-05	F	Met
Halifax County Schools	420346	Northwest Halifax Collegiate and Technic	Northeast	09-12	D	Not Met
Halifax County Schools	420348	Pittman Elementary Leadership Academy	Northeast	PK-05	D	Met
Halifax County Schools	420358	Southeast Halifax Collegiate Prep Academ	Northeast	09-12	D	Not Met
Halifax County Schools	420376	William R Davie Middle S.T.E.M. Academy	Northeast	06-08	F	Not Met
Harnett County Schools	430316	Boone Trail Elementary	North Central	PK-05	D	Met
Harnett County Schools	430328	Coats Elementary	North Central	PK-05	F	Met
Harnett County Schools	430336	Erwin Elementary at Gentry	North Central	0K-05	F	Met
Harnett County Schools	430344	Harnett Primary	North Central	PK-03	D	Met
Harnett County Schools	430347	Harnett Central Middle	North Central	06-08	D	Met
Harnett County Schools	430348	Johnsonville Elementary	North Central	PK-05	D	Met
Harnett County Schools	430349	Highland Elementary	North Central	0K-05	D	Not Met
Harnett County Schools	430351	Highland Middle	North Central	06-08	D	Not Met

District Name	School Code	School Name	State Board Region	Grade Span	School Performance Grade	EVAAS Growth Status
Harnett County Schools	430358	Lillington-Shawtown Elementary	North Central	PK-05	D	Met
Harnett County Schools	430369	Overhills Elementary	North Central	PK-05	F	Not Met
Harnett County Schools	430376	South Harnett Elementary	North Central	03-05	D	Not Met
Harnett County Schools	430380	Wayne Avenue Elementary	North Central	04-05	F	Not Met
Harnett County Schools	430385	Harnett Virtual Academy	North Central	0K-12	D	Not Met
Henderson County Schools	450301	Apple Valley Middle	Western	06-08	D	Not Met
Henderson County Schools	450307	Clear Creek Elementary	Western	PK-05	D	Not Met
Henderson County Schools	450322	Edneyville Elementary	Western	PK-05	D	Not Met
Henderson County Schools	450344	Sugarloaf Elementary	Western	PK-05	D	Not Met
Henderson County Schools	450346	Upward Elementary	Western	PK-05	D	Met
Hertford County Schools	460308	Ahoskie Elementary	Northeast	04-05	F	Met
Hertford County Schools	460312	Bearfield Primary	Northeast	PK-03	D	Met
Hertford County Schools	460318	Hertford County Middle	Northeast	06-08	F	Met
Hertford County Schools	460320	Hertford County High	Northeast	09-12	D	Not Met
Hertford County Schools	460332	Riverview Elementary	Northeast	PK-05	F	Met
Hickory City Schools	181316	Grandview Middle	Northwest	06-08	D	Met
Hickory City Schools	181344	Viewmont Elementary	Northwest	PK-05	D	Met
Hoke County Schools	470316	J W McLaughlin Elementary	Sandhills	PK-05	F	Not Met
Hoke County Schools	470320	West Hoke Middle	Sandhills	06-08	D	Met
Hoke County Schools	470332	East Hoke Middle	Sandhills	06-08	D	Not Met
Hoke County Schools	470336	West Hoke Elementary	Sandhills	PK-05	D	Met
Hoke County Schools	470441	Sandy Grove Elementary	Sandhills	PK-05	D	Met
Hoke County Schools	470442	Sandy Grove Middle	Sandhills	06-08	D	Not Met
Innovative School District	295300	Southside Ashpole Elementary	Sandhills	0K-05	F	Met
Iredell-Statesville Schools	490319	Cloverleaf Elementary	Southwest	PK-05	D	Not Met
Iredell-Statesville Schools	490326	East Iredell Elementary	Southwest	PK-05	D	Not Met
Iredell-Statesville Schools	490327	East Iredell Middle	Southwest	06-08	F	Met
Iredell-Statesville Schools	490345	N B Mills Elementary	Southwest	PK-05	F	Not Met
Iredell-Statesville Schools	490348	Scotts Elementary	Southwest	PK-05	D	Not Met
Iredell-Statesville Schools	490349	North Iredell Middle	Southwest	06-08	D	Not Met
Iredell-Statesville Schools	490352	Third Creek Middle	Southwest	06-08	F	Not Met
Iredell-Statesville Schools	490354	Statesville High	Southwest	09-12	D	Not Met
Iredell-Statesville Schools	490363	Third Creek Elementary	Southwest	PK-05	D	Not Met
Iredell-Statesville Schools	490368	Union Grove Elementary	Southwest	PK-05	D	Not Met
Iredell-Statesville Schools	490380	West Iredell High	Southwest	09-12	D	Not Met
Iredell-Statesville Schools	490384	West Iredell Middle	Southwest	06-08	D	Not Met
Jackson County Schools	500304	Cullowhee Valley School	Western	0K-08	D	Met
Jackson County Schools	500316	Blue Ridge School	Western	PK-06	D	Met
Jackson County Schools	500337	Smokey Mountain Elementary	Western	PK-08	D	Met

District Name	School Code	School Name	State Board Region	Grade Span	School Performance Grade	EVAAS Growth Status
Johnston County Schools	510326	West Clayton Elementary	North Central	PK-05	D	Met
Johnston County Schools	510365	JCPS Virtual Academy	North Central	0K-12	D	Not Met
Johnston County Schools	510396	West Smithfield Elementary	North Central	PK-05	D	Met
Johnston County Schools	510399	Smithfield-Selma High	North Central	09-12	D	Not Met
Johnston County Schools	510404	South Smithfield Elementary	North Central	PK-05	D	Met
Jones County Schools	520328	Maysville Elementary	Southeast	PK-05	D	Met
Jones County Schools	520336	Trenton Elementary	Southeast	PK-05	F	Met
Jones County Schools	520344	Jones Senior High School	Southeast	06-12	D	Not Met
Kannapolis City Schools	132304	A L Brown High	Southwest	09-12	D	Not Met
Kannapolis City Schools	132308	Forest Park Elementary	Southwest	PK-05	D	Met
Kannapolis City Schools	132312	Fred L Wilson Elementary	Southwest	0K-05	D	Met
Kannapolis City Schools	132314	GW Carver Elementary	Southwest	0K-05	F	Not Met
Kannapolis City Schools	132330	Kannapolis Middle	Southwest	06-08	F	Not Met
Kannapolis City Schools	132332	Shady Brook Elementary	Southwest	0K-05	F	Not Met
Lab Schools	34Z000	Appalachian Academy at Middle Fork	Piedmont-Triad	0K-05	F	Met
Lab Schools	65Z000	D.C. Virgo Preparatory Academy	Southeast	0K-08	F	Met
Lab Schools	74Z000	ECU Community School	Northeast	0K-05	D	Met
Lab Schools	79Z000	Moss Street Partnership School	Piedmont-Triad	0K-05	F	Met
Lee County Schools	530314	East Lee Middle	North Central	06-08	F	Not Met
Lee County Schools	530336	Lee County High	North Central	09-12	D	Not Met
Lee County Schools	530354	J R Ingram Jr Elementary	North Central	0K-05	D	Met
Lee County Schools	530356	West Lee Middle	North Central	06-08	D	Not Met
Lenoir County Public Schools	540308	Contentnea-Savannah School	Southeast	PK-08	D	Met
Lenoir County Public Schools	540315	Kinston High	Southeast	09-12	D	Met
Lenoir County Public Schools	540316	La Grange Elementary	Southeast	PK-05	D	Met
Lenoir County Public Schools	540324	North Lenoir High	Southeast	09-12	D	Not Met
Lenoir County Public Schools	540325	Northeast Elementary	Southeast	PK-05	F	Met
Lenoir County Public Schools	540330	Rochelle Middle	Southeast	06-08	F	Met
Lenoir County Public Schools	540338	Southeast Elementary	Southeast	0K-05	F	Met
Lexington City Schools	291332	Lexington Middle School	Piedmont-Triad	06-08	D	Met
Lexington City Schools	291336	Lexington Senior High School	Piedmont-Triad	09-12	D	Not Met
Lexington City Schools	291340	Pickett Elementary School	Piedmont-Triad	0K-05	D	Met
Lexington City Schools	291352	Southwest Elementary Global Academy	Piedmont-Triad	01-05	D	Not Met
Lincoln County Schools	550312	Battleground Elementary	Southwest	PK-05	F	Not Met
Lincoln County Schools	550334	Lincolnton Middle	Southwest	06-08	D	Not Met

District Name	School Code	School Name	State Board Region	Grade Span	School Performance Grade	EVAAS Growth Status
Lincoln County Schools	550336	Love Memorial Elementary	Southwest	PK-05	D	Not Met
Lincoln County Schools	550340	Childers Elementary	Southwest	PK-05	D	Not Met
Lincoln County Schools	550349	Pumpkin Center Intermediate	Southwest	03-05	D	Not Met
Lincoln County Schools	550360	S Ray Lowder Elementary	Southwest	PK-05	D	Met
Lincoln County Schools	550372	West Lincoln Middle	Southwest	06-08	D	Not Met
Macon County Schools	560328	Iotla Valley Elementary	Western	PK-04	D	Met
Macon County Schools	560331	Mountain View Intermediate	Western	05-06	D	Not Met
Macon County Schools	560340	Macon Virtual Academy	Western	0K-08	F	Not Met
Martin County Schools	580312	E J Hayes Elementary	Northeast	03-05	F	Not Met
Martin County Schools	580316	South Creek Elementary	Northeast	PK-05	F	Not Met
Martin County Schools	580337	South Creek Middle	Northeast	06-08	F	Not Met
Martin County Schools	580344	South Creek High	Northeast	09-12	D	Not Met
Martin County Schools	580368	Riverside High	Northeast	09-12	D	Not Met
Martin County Schools	580372	Riverside Middle	Northeast	06-08	D	Met
McDowell County Schools	590329	McDowell Virtual Academy	Northwest	0K-12	F	Not Met
McDowell County Schools	590336	North Cove Elementary School	Northwest	PK-05	D	Met
McDowell County Schools	590344	Pleasant Gardens Elementary School	Northwest	PK-05	D	Met
McDowell County Schools	590352	West Marion Elementary School	Northwest	PK-05	D	Met
Mitchell County Schools	610302	Bowman Middle	Northwest	05-08	D	Not Met
Montgomery County Schools	620312	Candor Elementary	Sandhills	PK-05	D	Met
Montgomery County Schools	620330	Page Street Elementary	Sandhills	03-05	F	Not Met
Montgomery County Schools	620339	West Middle	Sandhills	06-08	D	Met
Montgomery County Schools	620356	Montgomery Central High	Sandhills	09-12	D	Not Met
Moore County Schools	630308	Aberdeen Elementary	Sandhills	PK-05	F	Not Met
Moore County Schools	630312	Cameron Elementary	Sandhills	0K-05	D	Not Met
Moore County Schools	630348	Robbins Elementary	Sandhills	PK-05	F	Not Met
Moore County Schools	630356	Southern Pines Elementary	Sandhills	PK-05	D	Met
Moore County Schools	630376	Westmoore Elementary	Sandhills	0K-08	D	Not Met
Mooresville City Schools	491308	Mooresville Middle	Southwest	07-08	D	Not Met
Mount Airy City Schools	862310	Jones Intermediate	Piedmont-Triad	03-05	D	Not Met
Nash County Public Schools	640304	Bailey Elementary	North Central	PK-05	D	Met
Nash County Public Schools	640306	Baskerville Elementary	North Central	0K-05	F	Not Met
Nash County Public Schools	640308	Benvenue Elementary	North Central	0K-05	D	Met
Nash County Public Schools	640316	Cedar Grove Elementary	North Central	PK-05	D	Met
Nash County Public Schools	640320	Nash Central Middle	North Central	06-08	D	Not Met
Nash County Public Schools	640326	D S Johnson Elementary	North Central	03-05	F	Not Met
Nash County Public Schools	640328	Englewood Elementary	North Central	03-05	F	Not Met



District Name	School Code	School Name	State Board Region	Grade Span	School Performance Grade	EVAAS Growth Status
Nash County Public Schools	640334	J W Parker Middle	North Central	06-08	F	Not Met
Nash County Public Schools	640336	Middlesex Elementary	North Central	PK-05	D	Met
Nash County Public Schools	640346	Nash Central High	North Central	PK-12	D	Not Met
Nash County Public Schools	640358	Red Oak Middle	North Central	06-08	D	Not Met
Nash County Public Schools	640361	Rocky Mount High	North Central	09-12	D	Not Met
Nash County Public Schools	640362	Southern Nash Middle	North Central	06-08	D	Met
Nash County Public Schools	640364	Southern Nash High	North Central	09-12	D	Not Met
Nash County Public Schools	640376	Spring Hope Elementary	North Central	PK-05	D	Met
New Hanover County Schools	650312	R Freeman Sch of Engineering	Southeast	PK-05	F	Met
New Hanover County Schools	650316	College Park Elementary	Southeast	0K-05	D	Met
New Hanover County Schools	650324	Edwin A Alderman Elementary	Southeast	0K-05	D	Met
New Hanover County Schools	650328	Forest Hills Global Elementary	Southeast	0K-05	F	Not Met
New Hanover County Schools	650332	The International School at Gregory	Southeast	0K-08	D	Met
New Hanover County Schools	650341	John J Blair Elementary	Southeast	PK-05	D	Met
New Hanover County Schools	650343	Holly Shelter Middle	Southeast	06-08	D	Not Met
New Hanover County Schools	650351	Myrtle Grove Middle	Southeast	06-08	D	Not Met
New Hanover County Schools	650355	Career Readiness Academy at Mosley PLC	Southeast	PK-12	D	Met
New Hanover County Schools	650384	A H Snipes Academy of Arts/Des	Southeast	0K-05	F	Met
New Hanover County Schools	650392	Williston Middle	Southeast	06-08	F	Met
New Hanover County Schools	650404	Wrightsboro Elementary	Southeast	PK-05	F	Not Met
Newton Conover City Schools	182324	South Newton Elementary	Northwest	PK-05	D	Not Met
Northampton County Schools	660306	Central Elementary	Northeast	PK-05	D	Met
Northampton County Schools	660320	Gaston STEM Leadership Academy	Northeast	PK-08	F	Met
Northampton County Schools	660336	Northampton County High School	Northeast	09-12	D	Not Met
Northampton County Schools	660360	Willis Hare Elementary	Northeast	PK-05	F	Met
Onslow County Schools	670304	Bell Fork Elementary	Southeast	0K-05	D	Not Met
Onslow County Schools	670308	Blue Creek Elementary	Southeast	0K-05	D	Not Met
Onslow County Schools	670312	Clyde Erwin Elementary	Southeast	0K-05	D	Met
Onslow County Schools	670321	Hunters Creek Elementary	Southeast	PK-05	D	Met
Onslow County Schools	670322	Hunters Creek Middle	Southeast	06-08	D	Not Met
Onslow County Schools	670323	Jacksonville Commons Elem	Southeast	0K-05	D	Not Met
Onslow County Schools	670329	Meadow View Elementary	Southeast	0K-05	D	Not Met
Onslow County Schools	670332	Northwoods Elementary	Southeast	0K-05	D	Not Met
Onslow County Schools	670336	Northwoods Park Middle	Southeast	06-08	D	Not Met
Onslow County Schools	670337	Heritage Elementary School	Southeast	0K-05	D	Not Met
Onslow County Schools	670339	Richlands Elementary	Southeast	0K-05	D	Not Met
Onslow County Schools	670342	Silverdale Elementary	Southeast	0K-05	D	Not Met

District Name	School Code	School Name	State Board Region	Grade Span	School Performance Grade	EVAAS Growth Status
Onslow County Schools	670343	Southwest Elementary	Southeast	PK-05	D	Not Met
Onslow County Schools	670345	Southwest Middle	Southeast	06-08	D	Met
Onslow County Schools	670346	Summersill Elementary	Southeast	PK-05	D	Not Met
Onslow County Schools	670347	Stateside Elementary	Southeast	0K-05	D	Not Met
Onslow County Schools	670356	Trexler Middle	Southeast	06-08	D	Met
Onslow County Schools	670378	Onslow Virtual Elementary	Southeast	0K-05	F	Not Met
Orange County Schools	680300	Orange County Schools Online Academy	North Central	0K-12	D	Not Met
Orange County Schools	680327	Gravelly Hill Middle	North Central	06-08	F	Not Met
Pamlico County Schools	690312	Fred A Anderson Elementary	Southeast	04-05	D	Not Met
Pasquotank County Schools	700306	Central Elementary	Northeast	0K-05	D	Met
Pasquotank County Schools	700314	Northside Elementary	Northeast	0K-05	D	Met
Pasquotank County Schools	700316	J C Sawyer Elementary	Northeast	0K-05	F	Not Met
Pasquotank County Schools	700317	Northeastern High	Northeast	09-12	D	Not Met
Pasquotank County Schools	700318	Pasquotank Elementary	Northeast	0K-05	D	Met
Pasquotank County Schools	700319	Pasquotank County High	Northeast	09-12	D	Not Met
Pasquotank County Schools	700320	P W Moore Elementary	Northeast	0K-05	F	Met
Pasquotank County Schools	700322	River Road Middle	Northeast	06-08	D	Met
Pender County Schools	710316	Burgaw Middle	Southeast	06-08	F	Not Met
Pender County Schools	710318	Cape Fear Elementary	Southeast	PK-05	D	Met
Pender County Schools	710320	Cape Fear Middle	Southeast	06-08	D	Not Met
Pender County Schools	710326	Pender High	Southeast	09-12	D	Not Met
Pender County Schools	710328	Penderlea Elementary	Southeast	PK-08	D	Not Met
Pender County Schools	710330	Pender Innovative Learning Academy	Southeast	0K-12	F	Not Met
Pender County Schools	710332	Rocky Point Elementary	Southeast	PK-05	D	Met
Pender County Schools	710348	West Pender Middle	Southeast	06-08	F	Not Met
Person County Schools	730334	North Elementary	North Central	0K-05	F	Met
Person County Schools	730344	Northern Middle	North Central	06-08	D	Not Met
Person County Schools	730362	Person County Schools Virtual Academy	North Central	PK-13	D	Met
Pitt County Schools	740304	Ayden Elementary	Northeast	PK-05	D	Met
Pitt County Schools	740310	Belvoir Elementary	Northeast	PK-05	D	Met
Pitt County Schools	740320	Bethel Elementary	Northeast	PK-08	D	Met
Pitt County Schools	740334	Falkland Elementary	Northeast	PK-05	D	Met
Pitt County Schools	740337	E B Aycock Middle	Northeast	06-08	D	Met
Pitt County Schools	740340	Farmville Middle	Northeast	06-08	D	Met
Pitt County Schools	740352	Grifton	Northeast	PK-08	D	Met
Pitt County Schools	740368	Lakeforest Elementary	Northeast	PK-05	D	Met
Pitt County Schools	740375	Northwest Elementary	Northeast	PK-05	F	Met
Pitt County Schools	740386	Sam D Bundy Elementary	Northeast	03-05	D	Met
Pitt County Schools	740390	South Greenville Elementary	Northeast	0K-05	F	Not Met

District Name	School Code	School Name	State Board Region	Grade Span	School Performance Grade	EVAAS Growth Status
Pitt County Schools	740400	Wahl Coates Elementary	Northeast	PK-05	D	Met
Pitt County Schools	740402	Wellcome Middle	Northeast	06-08	F	Not Met
Randolph County Schools	760308	Trinity Middle School	Piedmont-Triad	06-08	D	Not Met
Randolph County Schools	760316	Coleridge Elementary School	Piedmont-Triad	0K-05	D	Not Met
Randolph County Schools	760318	Eastern Randolph High School	Piedmont-Triad	09-12	D	Not Met
Randolph County Schools	760324	Franklinville Elementary School	Piedmont-Triad	0K-05	D	Not Met
Randolph County Schools	760332	Liberty Elementary School	Piedmont-Triad	PK-05	D	Met
Randolph County Schools	760338	Northeastern Randolph Middle School	Piedmont-Triad	06-08	D	Not Met
Randolph County Schools	760340	Ramseur Elementary School	Piedmont-Triad	PK-05	D	Not Met
Randolph County Schools	760344	Randleman Elementary School	Piedmont-Triad	0K-04	D	Met
Randolph County Schools	760352	Randleman Middle School	Piedmont-Triad	05-08	D	Met
Randolph County Schools	760357	Southeastern Randolph Middle School	Piedmont-Triad	06-08	F	Not Met
Randolph County Schools	760358	Southwestern Randolph High School	Piedmont-Triad	09-12	D	Not Met
Randolph County Schools	760360	Southwestern Randolph Middle	Piedmont-Triad	06-08	D	Not Met
Randolph County Schools	760376	Trinity Elementary School	Piedmont-Triad	0K-05	D	Met
Randolph County Schools	760382	Uwharrie Ridge Six-Twelve	Piedmont-Triad	06-12	D	Not Met
Randolph County Schools	760385	The Virtual Academy at Randolph	Piedmont-Triad	0K-08	F	Not Met
Richmond County Schools	770310	East Rockingham Elementary	Sandhills	0K-05	D	Met
Richmond County Schools	770328	Hamlet Middle	Sandhills	06-08	D	Met
Richmond County Schools	770368	West Rockingham Elementary	Sandhills	PK-05	D	Met
Richmond County Schools	770370	Washington Street Elementary	Sandhills	PK-05	F	Not Met
Roanoke Rapids City Schools	421304	Belmont Elementary School	Northeast	PK-05	F	Not Met
Roanoke Rapids City Schools	421306	Chaloner Middle School	Northeast	06-08	D	Met
Roanoke Rapids City Schools	421316	Roanoke Rapids High School	Northeast	09-12	D	Not Met
Robeson County Schools	780320	Deep Branch Elementary	Sandhills	PK-06	F	Not Met
Robeson County Schools	780325	Fairmont High	Sandhills	09-12	D	Not Met
Robeson County Schools	780326	Fairmont Middle	Sandhills	05-08	F	Met
Robeson County Schools	780328	Fairgrove Elementary School	Sandhills	PK-04	F	Met
Robeson County Schools	780330	L Gilbert Carroll	Sandhills	04-05	F	Met
Robeson County Schools	780340	Long Branch Elementary	Sandhills	PK-04	D	Met
Robeson County Schools	780341	Lumberton Junior	Sandhills	06-08	F	Met
Robeson County Schools	780352	Orrum Middle	Sandhills	05-08	F	Met
Robeson County Schools	780360	Parkton Elementary	Sandhills	PK-08	D	Met
Robeson County Schools	780364	Pembroke Elementary	Sandhills	PK-05	D	Met
Robeson County Schools	780374	Peterson Elementary	Sandhills	PK-04	F	Met

District Name	School Code	School Name	State Board Region	Grade Span	School Performance Grade	EVAAS Growth Status
Robeson County Schools	780376	Piney Grove Elementary	Sandhills	PK-06	F	Met
Robeson County Schools	780391	Red Springs High	Sandhills	09-12	D	Not Met
Robeson County Schools	780392	Rex-Rennert Elementary	Sandhills	PK-05	F	Met
Robeson County Schools	780393	Red Springs Middle	Sandhills	05-08	F	Not Met
Robeson County Schools	780394	Rosenwald Elementary	Sandhills	PK-04	F	Not Met
Robeson County Schools	780410	Townsend	Sandhills	PK-08	F	Not Met
Robeson County Schools	780417	W H Knuckles	Sandhills	PK-03	D	Met
Robeson County Schools	780420	Purnell Swett High	Sandhills	09-12	D	Not Met
Robeson County Schools	780421	South Robeson Intermediate	Sandhills	05-08	F	Met
Rockingham County Schools	790318	Douglass Elementary	Piedmont-Triad	PK-05	D	Met
Rockingham County Schools	790327	Huntsville Elementary	Piedmont-Triad	PK-05	D	Met
Rockingham County Schools	790330	J E Holmes Middle	Piedmont-Triad	06-08	D	Met
Rockingham County Schools	790347	Lincoln Elementary	Piedmont-Triad	PK-05	D	Met
Rockingham County Schools	790354	John M Morehead High	Piedmont-Triad	09-12	D	Not Met
Rockingham County Schools	790362	John W Dillard Academy	Piedmont-Triad	PK-05	D	Met
Rockingham County Schools	790366	Reidsville High	Piedmont-Triad	PK-12	D	Not Met
Rockingham County Schools	790386	South End Elementary	Piedmont-Triad	PK-05	D	Met
Rowan-Salisbury Schools	800314	Erwin Middle	Southwest	06-08	D	Not Met
Rowan-Salisbury Schools	800315	Overton Elementary	Southwest	0K-05	F	Not Met
Rowan-Salisbury Schools	800316	China Grove Elementary	Southwest	PK-05	D	Not Met
Rowan-Salisbury Schools	800320	China Grove Middle	Southwest	06-08	D	Not Met
Rowan-Salisbury Schools	800328	Corriher Lipe Middle	Southwest	06-08	D	Not Met
Rowan-Salisbury Schools	800346	Koontz Elementary	Southwest	PK-05	F	Met
Rowan-Salisbury Schools	800347	Shive Elementary	Southwest	PK-05	D	Not Met
Rowan-Salisbury Schools	800356	Granite Quarry Elementary	Southwest	PK-05	D	Met
Rowan-Salisbury Schools	800358	Isenberg Elementary	Southwest	PK-05	D	Met
Rowan-Salisbury Schools	800359	Dole Elementary	Southwest	PK-05	F	Not Met
Rowan-Salisbury Schools	800360	Hurley Elementary	Southwest	PK-05	F	Met
Rowan-Salisbury Schools	800362	Knollwood Elementary	Southwest	PK-05	F	Not Met
Rowan-Salisbury Schools	800363	Knox Middle	Southwest	06-08	F	Not Met
Rowan-Salisbury Schools	800368	Morgan Elementary	Southwest	PK-05	D	Not Met
Rowan-Salisbury Schools	800373	North Rowan Elementary	Southwest	PK-05	F	Not Met
Rowan-Salisbury Schools	800376	North Rowan High	Southwest	09-12	D	Not Met
Rowan-Salisbury Schools	800377	North Rowan Middle	Southwest	06-08	F	Not Met
Rowan-Salisbury Schools	800396	Salisbury High	Southwest	09-12	D	Not Met
Rowan-Salisbury Schools	800398	Southeast Middle	Southwest	06-08	F	Not Met
Rowan-Salisbury Schools	800400	South Rowan High	Southwest	09-12	D	Not Met
Rowan-Salisbury Schools	800406	West Rowan Elementary	Southwest	PK-05	D	Met

District Name	School Code	School Name	State Board Region	Grade Span	School Performance Grade	EVAAS Growth Status
Rowan-Salisbury Schools	800408	West Rowan High	Southwest	09-12	D	Not Met
Rowan-Salisbury Schools	800410	West Rowan Middle	Southwest	06-08	F	Not Met
Rowan-Salisbury Schools	800500	Summit K-8 Virtual Academy	Southwest	0K-08	F	Not Met
Rutherford County Schools	810326	Chase Middle School	Western	06-08	D	Not Met
Rutherford County Schools	810342	East Rutherford Middle School	Western	06-08	D	Not Met
Rutherford County Schools	810364	Mt. Vernon-Ruth Elementary School	Western	0K-05	D	Not Met
Sampson County Schools	820312	Roseboro Elementary	Sandhills	PK-05	D	Met
Sampson County Schools	820347	Hobbs Middle	Sandhills	06-08	D	Not Met
Sampson County Schools	820370	Union Middle	Sandhills	06-08	D	Met
Sampson County Schools	820372	Roseboro-Salemburg Middle	Sandhills	06-08	D	Not Met
Sampson County Schools	820385	Union Intermediate	Sandhills	03-05	D	Not Met
Scotland County Schools	830304	Carver Middle	Sandhills	06-08	F	Met
Scotland County Schools	830328	Laurel Hill Elementary	Sandhills	PK-05	D	Met
Scotland County Schools	830360	Wagram Elementary	Sandhills	PK-05	F	Not Met
Scotland County Schools	830364	Sycamore Lane Elementary	Sandhills	03-05	F	Not Met
Stanly County Schools	840302	Albemarle High	Southwest	09-12	D	Not Met
Stanly County Schools	840303	Albemarle Middle	Southwest	06-08	D	Met
Stanly County Schools	840304	Aquadale Elementary	Southwest	PK-05	D	Not Met
Stanly County Schools	840312	Endy Elementary	Southwest	PK-05	D	Met
Stanly County Schools	840316	East Albemarle Elementary	Southwest	0K-05	D	Met
Stanly County Schools	840328	North Stanly Middle	Southwest	06-08	D	Not Met
Stanly County Schools	840336	Norwood Elementary	Southwest	0K-05	D	Met
Stanly County Schools	840358	South Stanly Middle	Southwest	06-08	D	Met
Stanly County Schools	840360	Stanfield Elementary	Southwest	0K-05	D	Met
Stanly County Schools	840366	Stanly County Virtual Education	Southwest	0K-12	D	Met
Stokes County Schools	850312	Germanton Elementary School	Piedmont-Triad	0K-05	D	Not Met
Stokes County Schools	850320	Lawsonville Elementary School	Piedmont-Triad	0K-05	D	Met
Stokes County Schools	850336	Pine Hall Elementary School	Piedmont-Triad	0K-05	D	Met
Stokes County Schools	850338	Piney Grove Middle School	Piedmont-Triad	06-08	D	Not Met
Stokes County Schools	850350	Southeastern Stokes Middle School	Piedmont-Triad	06-08	D	Not Met
Stokes County Schools	850356	Walnut Cove Elementary School	Piedmont-Triad	PK-05	D	Not Met
Surry County Schools	860306	Central Middle	Piedmont-Triad	06-08	D	Not Met
Surry County Schools	860330	Meadowview Magnet Middle	Piedmont-Triad	06-08	D	Not Met
Surry County Schools	860332	Mountain Park Elementary	Piedmont-Triad	PK-05	D	Met
Swain County Schools	870318	Swain County Middle School	Western	PK-08	D	Not Met
Swain County Schools	870320	Swain County East Elementary	Western	0K-05	D	Met
Thomasville City Schools	292316	Liberty Drive Elementary	Piedmont-Triad	04-05	F	Not Met

District Name	School Code	School Name	State Board Region	Grade Span	School Performance Grade	EVAAS Growth Status
Thomasville City Schools	292318	Thomasville Primary	Piedmont-Triad	PK-03	D	Met
Thomasville City Schools	292324	Thomasville High	Piedmont-Triad	09-12	D	Not Met
Transylvania County Schools	880318	Pisgah Forest Elementary	Western	PK-05	D	Not Met
Transylvania County Schools	880336	T C Henderson	Western	PK-05	D	Not Met
Tyrrell County Schools	890306	Columbia Middle	Northeast	06-08	D	Met
Tyrrell County Schools	890308	Tyrrell Elementary	Northeast	PK-05	D	Met
Union County Public Schools	900304	Benton Heights Elementary	Southwest	PK-05	D	Met
Union County Public Schools	900306	East Elementary	Southwest	PK-05	D	Met
Union County Public Schools	900308	East Union Middle	Southwest	06-08	D	Met
Union County Public Schools	900314	Monroe Middle	Southwest	06-08	F	Not Met
Union County Public Schools	900336	Monroe High	Southwest	09-12	D	Not Met
Union County Public Schools	900341	Porter Ridge Elementary	Southwest	PK-05	D	Not Met
Union County Public Schools	900346	Parkwood Middle	Southwest	06-08	D	Not Met
Union County Public Schools	900356	Shiloh Valley Elementary	Southwest	03-05	D	Not Met
Union County Public Schools	900364	Union Elementary	Southwest	PK-05	D	Not Met
Union County Public Schools	900370	Walter Bickett Elementary	Southwest	PK-05	F	Not Met
Union County Public Schools	900384	Western Union Elementary	Southwest	PK-05	D	Not Met
Union County Public Schools	900388	Wingate Elementary	Southwest	PK-05	D	Not Met
Vance County Schools	910308	Carver Elementary	North Central	PK-05	F	Met
Vance County Schools	910311	Clarke Elementary	North Central	PK-05	F	Met
Vance County Schools	910316	Vance County Middle School	North Central	06-08	F	Met
Vance County Schools	910340	New Hope Elementary	North Central	PK-05	F	Met
Vance County Schools	910346	E O Young Jr Elementary	North Central	PK-05	D	Met
Vance County Schools	910360	E M Rollins Elementary	North Central	PK-05	F	Met
Vance County Schools	910369	Vance Virtual Village Academy	North Central	0K-12	F	Not Met
Vance County Schools	910370	Vance County High School	North Central	09-12	D	Not Met
Wake County Schools	920302	River Bend Elementary	North Central	PK-05	D	Met
Wake County Schools	920320	Aversboro Elementary	North Central	PK-05	D	Not Met
Wake County Schools	920325	Banks Road Elementary	North Central	PK-05	D	Not Met
Wake County Schools	920326	Baileywick Road Elementary	North Central	PK-05	D	Met
Wake County Schools	920342	Brier Creek Elementary	North Central	PK-05	D	Not Met
Wake County Schools	920360	Carroll Middle	North Central	06-08	D	Not Met
Wake County Schools	920370	Centennial Campus Middle	North Central	06-08	D	Met
Wake County Schools	920393	Dillard Drive Elementary	North Central	PK-05	D	Not Met

District Name	School Code	School Name	State Board Region	Grade Span	School Performance Grade	EVAAS Growth Status
Wake County Schools	920394	Dillard Drive Middle	North Central	06-08	D	Not Met
Wake County Schools	920398	Durant Road Elementary	North Central	PK-05	D	Met
Wake County Schools	920399	Durant Road Middle	North Central	06-08	D	Met
Wake County Schools	920403	East Garner Elementary	North Central	PK-05	D	Met
Wake County Schools	920404	East Garner Middle	North Central	06-08	F	Not Met
Wake County Schools	920408	East Millbrook Middle	North Central	06-08	F	Met
Wake County Schools	920410	Neuse River Middle	North Central	06-08	D	Met
Wake County Schools	920417	Forest Pines Drive Elementary	North Central	PK-05	D	Met
Wake County Schools	920420	Fuquay-Varina Elementary	North Central	PK-05	D	Not Met
Wake County Schools	920440	Green Elementary	North Central	PK-05	D	Met
Wake County Schools	920451	Harris Creek Elementary	North Central	PK-05	D	Not Met
Wake County Schools	920466	Knightdale High	North Central	09-12	D	Met
Wake County Schools	920480	Lockhart Elementary	North Central	PK-05	D	Met
Wake County Schools	920496	Millbrook Elementary	North Central	PK-05	F	Not Met
Wake County Schools	920512	North Garner Middle	North Central	06-08	D	Met
Wake County Schools	920536	Powell Elementary	North Central	PK-05	D	Not Met
Wake County Schools	920540	Rand Road Elementary	North Central	PK-05	D	Met
Wake County Schools	920542	Reedy Creek Elementary	North Central	0K-05	D	Met
Wake County Schools	920560	Smith Elementary	North Central	PK-05	D	Met
Wake County Schools	920562	Southeast Raleigh High	North Central	09-12	D	Not Met
Wake County Schools	920563	Southeast Raleigh Elementary	North Central	PK-05	F	Met
Wake County Schools	920580	Vandora Springs Elementary	North Central	PK-05	D	Met
Wake County Schools	920584	Wake Forest Elementary	North Central	PK-05	D	Met
Wake County Schools	920592	Wake Forest Middle School	North Central	06-08	D	Not Met
Wake County Schools	920593	Wakefield Elementary	North Central	PK-05	D	Met
Wake County Schools	920597	Wakelon Elementary	North Central	PK-05	D	Met
Wake County Schools	920600	Wendell Elementary	North Central	0K-05	D	Not Met
Wake County Schools	920607	West Lake Middle	North Central	06-08	D	Not Met
Wake County Schools	920616	Wilburn Elementary	North Central	PK-05	D	Met

District Name	School Code	School Name	State Board Region	Grade Span	School Performance Grade	EVAAS Growth Status
Wake County Schools	920632	Zebulon Elementary	North Central	PK-05	D	Met
Warren County Schools	930330	Mariam Boyd Elementary	North Central	PK-05	F	Met
Warren County Schools	930340	Northside K-8	North Central	PK-08	F	Met
Warren County Schools	930348	Vaughan Elementary	North Central	PK-05	F	Not Met
Warren County Schools	930352	Warren County High	North Central	09-12	D	Not Met
Warren County Schools	930354	Warren County Middle	North Central	06-08	F	Met
Washington County Schools	940306	Creswell Elementary	Northeast	PK-05	D	Met
Washington County Schools	940314	Pines Elementary	Northeast	PK-05	D	Met
Washington County Schools	940316	Washington County High	Northeast	09-12	D	Not Met
Wayne County Public Schools	960312	Brogden Middle	Southeast	05-08	F	Not Met
Wayne County Public Schools	960314	Brogden Primary	Southeast	PK-04	F	Not Met
Wayne County Public Schools	960318	Carver Heights Elementary	Southeast	03-05	F	Met
Wayne County Public Schools	960326	Dillard Middle	Southeast	06-08	F	Met
Wayne County Public Schools	960329	Eastern Wayne Elementary	Southeast	PK-05	F	Met
Wayne County Public Schools	960330	Eastern Wayne High	Southeast	09-12	D	Not Met
Wayne County Public Schools	960331	Eastern Wayne Middle	Southeast	06-08	D	Met
Wayne County Public Schools	960335	Goldsboro High	Southeast	09-12	F	Not Met
Wayne County Public Schools	960338	Grantham Middle	Southeast	05-08	F	Not Met
Wayne County Public Schools	960340	Greenwood Middle	Southeast	05-08	D	Met
Wayne County Public Schools	960348	Mount Olive Middle	Southeast	05-08	F	Not Met
Wayne County Public Schools	960380	Southern Wayne High	Southeast	09-12	D	Not Met
Wayne County Public Schools	960387	Spring Creek Middle	Southeast	05-08	D	Not Met
Wayne County Public Schools	960388	Tommy's Road Elementary	Southeast	PK-05	D	Met
Weldon City Schools	422314	Weldon Elementary Global Academy	Northeast	PK-04	F	Met
Weldon City Schools	422315	Weldon STEM High School Career Academies	Northeast	09-12	D	Met
Whiteville City Schools	241308	Edgewood Elementary	Sandhills	03-05	D	Not Met
Wilkes County Schools	970308	Boomer-Ferguson Elementary School	Northwest	PK-05	D	Met
Wilkes County Schools	970312	C C Wright Elementary School	Northwest	PK-05	D	Not Met
Wilkes County Schools	970315	Central Wilkes Middle School	Northwest	06-08	D	Not Met
Wilson County Schools	980317	Charles H Darden Middle	North Central	06-08	F	Not Met
Wilson County Schools	980344	John W Jones Elementary	North Central	PK-05	D	Met
Wilson County Schools	980356	Margaret Hearne Elementary	North Central	PK-05	D	Met
Wilson County Schools	980357	Vick Elementary	North Central	PK-05	F	Met
Wilson County Schools	980380	Speight Middle	North Central	06-08	D	Not Met
Wilson County Schools	980388	Stantonsburg Elementary	North Central	0K-05	D	Met



<b>District Name</b>	<b>School Code</b>	<b>School Name</b>	<b>State Board Region</b>	<b>Grade Span</b>	<b>School Performance Grade</b>	<b>EVAAS Growth Status</b>
Wilson County Schools	980390	Toisnot Middle	North Central	06-08	F	Not Met
Yadkin County Schools	990304	Boonville Elementary	Piedmont-Triad	PK-12	D	Not Met
Yadkin County Schools	990321	Forbush Middle	Piedmont-Triad	06-08	D	Not Met
Yadkin County Schools	990324	Jonesville Elementary	Piedmont-Triad	PK-05	D	Met
Yadkin County Schools	990325	Starmount Middle	Piedmont-Triad	06-09	D	Not Met
Yadkin County Schools	990328	West Yadkin Elementary	Piedmont-Triad	PK-05	D	Not Met
Yadkin County Schools	990336	Yadkinville Elementary	Piedmont-Triad	PK-08	D	Not Met
Yancey County Schools	995328	Micaville Elementary	Northwest	0K-05	D	Met

### ***2021-2022 Low-Performing Districts***

Low-performing districts are defined as districts that had greater than 50% of schools identified as low-performing. Beginning with the 2022–23 school year, Southside Ashpole has been transferred back to Public Schools of Robeson County from the Innovative School District. Therefore, Southside Ashpole is reported under the Public Schools of Robeson County using school code 295300. Questions regarding Southside Ashpole should be directed to Public Schools of Robeson County.

<b>District Code</b>	<b>District Name</b>	<b>Number of Low-Performing Schools</b>	<b>Number of Schools with a School Performance Grade and Growth</b>	<b>Percent of Low-Performing Schools in District</b>
460	Hertford County Schools	5	6	83.3
291	Lexington City Schools	4	5	80.0
660	Northampton County Schools	4	5	80.0
132	Kannapolis City Schools	6	8	75.0
292	Thomasville City Schools	3	4	75.0
580	Martin County Schools	6	8	75.0
761	Asheboro City Schools	6	8	75.0
800	Rowan-Salisbury Schools	24	32	75.0
940	Washington County Schools	3	4	75.0
240	Columbus County Schools	10	14	71.4
330	Edgecombe County Public School	10	14	71.4
930	Warren County Schools	5	7	71.4
040	Anson County Schools	6	9	66.7
170	Caswell County Schools	4	6	66.7
380	Graham County Schools	2	3	66.7
700	Pasquotank County Schools	8	12	66.7
890	Tyrrell County Schools	2	3	66.7
420	Halifax County Schools	7	11	63.6
640	Nash County Public Schools	15	24	62.5
400	Greene County Schools	3	5	60.0
421	Roanoke Rapids City Schools	3	5	60.0
520	Jones County Schools	3	5	60.0
070	Beaufort County Schools	7	12	58.3
080	Bertie County Schools	4	7	57.1
780	Robeson County Schools	20	35	57.1
390	Granville County Schools	9	16	56.3
910	Vance County Schools	8	15	53.3
430	Harnett County Schools	13	25	52.0
410	Guilford County Schools	59	116	50.9

### ***2021-2022 Recurring Low Performing Schools List***

A recurring low-performing school is identified as low-performing in any two of the last three years. The years used for this list are the 2017–18, 2018–19 and 2021–22 school years, as 2019–20 and 2020–21 do not have data. A low-performing school has a school performance grade of 'D' or 'F', and a growth status of 'Met' or 'Not Met'. For the purposes of this list, charter schools are not identified as recurring low-performing schools.

<b>District Name</b>	<b>School Code</b>	<b>School Name</b>	<b>State Board Region</b>	<b>Low Performing 2021–22</b>	<b>Low Performing 2018–19</b>	<b>Low Performing 2017–18</b>
Alamance-Burlington Schools	010310	Broadview Middle	Piedmont-Triad	Y	Y	Y
Alamance-Burlington Schools	010326	Eastlawn Elementary	Piedmont-Triad		Y	Y
Alamance-Burlington Schools	010346	B. Everett Jordan Elementary	Piedmont-Triad	Y	Y	Y
Alamance-Burlington Schools	010350	Graham Middle	Piedmont-Triad	Y	Y	Y
Alamance-Burlington Schools	010351	Grove Park Elementary	Piedmont-Triad	Y	Y	Y
Alamance-Burlington Schools	010354	Harvey R Newlin Elementary	Piedmont-Triad	Y	Y	Y
Alamance-Burlington Schools	010357	Haw River Elementary	Piedmont-Triad	Y	Y	Y
Alamance-Burlington Schools	010358	Hillcrest Elementary	Piedmont-Triad	Y	Y	Y
Alamance-Burlington Schools	010364	North Graham Elementary	Piedmont-Triad	Y	Y	Y
Alamance-Burlington Schools	010380	South Graham Elementary	Piedmont-Triad	Y	Y	Y
Alamance-Burlington Schools	010392	Sylvan Elementary	Piedmont-Triad		Y	Y
Alamance-Burlington Schools	010394	Turrentine Middle	Piedmont-Triad	Y	Y	Y
Alexander County Schools	020316	Hiddenite Elementary	Northwest	Y		Y
Anson County Schools	040306	Anson High School	Southwest	Y	Y	
Anson County Schools	040309	Anson Middle	Southwest	Y	Y	Y
Anson County Schools	040311	Wadesboro Primary	Southwest	Y		Y
Anson County Schools	040316	Lilesville Elementary	Southwest	Y		Y
Anson County Schools	040324	Morven Elementary	Southwest	Y	Y	Y
Anson County Schools	040330	Wadesboro Elementary	Southwest	Y	Y	Y
Beaufort County Schools	070329	Northeast Elementary	Northeast	Y		Y
Beaufort County Schools	070338	P S Jones Middle	Northeast	Y		Y
Beaufort County Schools	070340	S W Snowden Elementary	Northeast	Y		Y
Bertie County Schools	080312	Bertie High	Northeast	Y	Y	Y
Bertie County Schools	080314	Bertie Middle	Northeast	Y	Y	Y
Bertie County Schools	080356	West Bertie Elementary	Northeast	Y	Y	

District Name	School Code	School Name	State Board Region	Low Performing 2021–22	Low Performing 2018–19	Low Performing 2017–18
Bladen County Schools	090318	Bladen Lakes Primary	Sandhills	Y	Y	
Bladen County Schools	090324	Dublin Primary	Sandhills	Y	Y	
Bladen County Schools	090328	East Arcadia Elementary	Sandhills		Y	Y
Bladen County Schools	090332	Elizabethtown Middle	Sandhills	Y	Y	Y
Bladen County Schools	090365	Tar Heel Middle	Sandhills	Y	Y	Y
Brunswick County Schools	100316	Leland Middle	Southeast	Y	Y	
Brunswick County Schools	100338	Supply Elementary	Southeast		Y	Y
Buncombe County Schools	110342	Erwin Middle	Western	Y	Y	Y
Buncombe County Schools	110372	Johnston Elementary	Western	Y	Y	Y
Buncombe County Schools	110384	Oakley Elementary	Western	Y	Y	
Buncombe County Schools	110410	Avery's Creek Elementary	Western	Y	Y	
Burke County Schools	120354	Mountain View Elementary	Northwest	Y	Y	
Cabarrus County Schools	130313	Concord Middle	Southwest	Y	Y	Y
Cabarrus County Schools	130328	Royal Oaks Elementary	Southwest		Y	Y
Cabarrus County Schools	130329	Rocky River Elementary	Southwest	Y	Y	
Cabarrus County Schools	130340	Winecoff Elementary	Southwest	Y	Y	Y
Cabarrus County Schools	130342	W M Irvin Elementary	Southwest	Y		Y
Caldwell County Schools	140324	Gamewell Elementary	Northwest	Y		Y
Caldwell County Schools	140392	West Lenoir Elementary	Northwest	Y	Y	Y
Caswell County Schools	170338	N L Dillard Middle	Piedmont-Triad	Y	Y	Y
Caswell County Schools	170339	Oakwood Elementary	Piedmont-Triad	Y		Y
Caswell County Schools	170342	South Elementary	Piedmont-Triad	Y		Y
Caswell County Schools	170344	Stoney Creek Elementary	Piedmont-Triad		Y	Y
Charlotte-Mecklenburg Schools	600301	Albemarle Road Middle	Southwest	Y	Y	
Charlotte-Mecklenburg Schools	600303	Charlotte East Language Academy	Southwest	Y	Y	
Charlotte-Mecklenburg Schools	600305	J. M. Alexander Middle	Southwest	Y	Y	Y
Charlotte-Mecklenburg Schools	600308	Allenbrook Elementary	Southwest		Y	Y
Charlotte-Mecklenburg Schools	600311	Ashley Park PreK-8 School	Southwest	Y	Y	Y
Charlotte-Mecklenburg Schools	600341	Cochrane Collegiate Academy	Southwest	Y	Y	Y
Charlotte-Mecklenburg Schools	600362	David Cox Road Elementary	Southwest	Y	Y	Y
Charlotte-Mecklenburg Schools	600364	Military and Global Leadership	Southwest	Y	Y	Y

<b>District Name</b>	<b>School Code</b>	<b>School Name</b>	<b>State Board Region</b>	<b>Low Performing 2021–22</b>	<b>Low Performing 2018–19</b>	<b>Low Performing 2017–18</b>
Charlotte-Mecklenburg Schools	600365	Devonshire Elementary	Southwest		Y	Y
Charlotte-Mecklenburg Schools	600366	Marie G Davis School	Southwest	Y	Y	
Charlotte-Mecklenburg Schools	600374	Druid Hills Academy	Southwest	Y	Y	Y
Charlotte-Mecklenburg Schools	600381	Eastway Middle	Southwest		Y	Y
Charlotte-Mecklenburg Schools	600405	Harding University High School	Southwest	Y	Y	Y
Charlotte-Mecklenburg Schools	600416	Hornets Nest Elementary	Southwest	Y	Y	Y
Charlotte-Mecklenburg Schools	600428	James Martin Middle	Southwest	Y	Y	Y
Charlotte-Mecklenburg Schools	600432	Joseph W Grier Academy	Southwest	Y	Y	
Charlotte-Mecklenburg Schools	600448	Martin Luther King, Jr Middle	Southwest	Y		Y
Charlotte-Mecklenburg Schools	600457	Rocky River High School	Southwest	Y		Y
Charlotte-Mecklenburg Schools	600459	Montclair Elementary	Southwest	Y	Y	Y
Charlotte-Mecklenburg Schools	600463	River Oaks Academy	Southwest	Y	Y	
Charlotte-Mecklenburg Schools	600474	Newell Elementary	Southwest	Y	Y	Y
Charlotte-Mecklenburg Schools	600479	Northeast Middle	Southwest	Y		Y
Charlotte-Mecklenburg Schools	600485	Oakdale Elementary	Southwest	Y	Y	Y
Charlotte-Mecklenburg Schools	600489	Bruns Avenue Elementary	Southwest		Y	Y
Charlotte-Mecklenburg Schools	600498	Performance Learning Center	Southwest	Y	Y	Y
Charlotte-Mecklenburg Schools	600501	Pinewood Elementary	Southwest	Y		Y
Charlotte-Mecklenburg Schools	600514	Ranson Middle	Southwest	Y	Y	Y
Charlotte-Mecklenburg Schools	600515	Renaissance West STEAM Academy	Southwest		Y	Y
Charlotte-Mecklenburg Schools	600517	Reid Park Academy	Southwest	Y	Y	Y
Charlotte-Mecklenburg Schools	600518	Ridge Road Middle	Southwest	Y		Y
Charlotte-Mecklenburg Schools	600520	Sedgefield Middle	Southwest	Y	Y	Y
Charlotte-Mecklenburg Schools	600538	Southwest Middle School	Southwest	Y		Y
Charlotte-Mecklenburg Schools	600545	Starmount Academy of Excellence	Southwest	Y	Y	Y
Charlotte-Mecklenburg Schools	600546	Statesville Road Elementary	Southwest	Y	Y	Y

District Name	School Code	School Name	State Board Region	Low Performing 2021–22	Low Performing 2018–19	Low Performing 2017–18
Charlotte-Mecklenburg Schools	600550	Sterling Elementary	Southwest	Y	Y	Y
Charlotte-Mecklenburg Schools	600562	Tuckaseegee Elementary	Southwest		Y	Y
Charlotte-Mecklenburg Schools	600565	University Park Creative Arts	Southwest	Y	Y	
Charlotte-Mecklenburg Schools	600576	West Charlotte High School	Southwest	Y	Y	
Charlotte-Mecklenburg Schools	600579	West Mecklenburg High School	Southwest	Y		Y
Charlotte-Mecklenburg Schools	600586	Winding Springs Elementary	Southwest	Y		Y
Charlotte-Mecklenburg Schools	600589	Winterfield Elementary	Southwest		Y	Y
Charlotte-Mecklenburg Schools	600592	Julius L. Chambers High School	Southwest	Y	Y	
Chatham County Schools	190312	Chatham Middle	North Central	Y	Y	Y
Cleveland County Schools	230336	Shelby Intermediate	Southwest	Y		Y
Cleveland County Schools	230342	Graham Elementary	Southwest	Y	Y	
Cleveland County Schools	230368	Township Three Elementary	Southwest	Y		Y
Columbus County Schools	240308	Acme Delco Elementary	Sandhills	Y	Y	
Columbus County Schools	240332	Chadbourn Elementary	Sandhills	Y	Y	Y
Columbus County Schools	240344	Evergreen Elementary	Sandhills	Y	Y	Y
Columbus County Schools	240372	Tabor City Elementary	Sandhills	Y	Y	
Columbus County Schools	240376	Tabor City Middle	Sandhills	Y	Y	Y
Craven County Schools	250332	H J MacDonald Middle	Southeast		Y	Y
Craven County Schools	250344	Havelock Middle	Southeast	Y	Y	
Craven County Schools	250348	J T Barber Elementary	Southeast	Y	Y	Y
Craven County Schools	250360	Oaks Road Academy	Southeast	Y	Y	Y
Craven County Schools	250362	Roger Bell New Tech Academy	Southeast	Y		Y
Craven County Schools	250376	West Craven Middle	Southeast	Y	Y	Y
Cumberland County Schools	260308	Ashley Elementary	Sandhills	Y		Y
Cumberland County Schools	260310	Loyd E Auman Elementary	Sandhills		Y	Y
Cumberland County Schools	260321	Douglas Byrd Middle	Sandhills		Y	Y
Cumberland County Schools	260322	Douglas Byrd High	Sandhills	Y	Y	
Cumberland County Schools	260336	Anne Chesnutt Middle	Sandhills		Y	Y
Cumberland County Schools	260358	Luther Nick Jeralds Middle	Sandhills	Y	Y	Y
Cumberland County Schools	260368	Hope Mills Middle	Sandhills	Y	Y	
Cumberland County Schools	260370	Ed V Baldwin Elementary	Sandhills		Y	Y
Cumberland County Schools	260372	Lewis Chapel Middle	Sandhills		Y	Y

District Name	School Code	School Name	State Board Region	Low Performing 2021–22	Low Performing 2018–19	Low Performing 2017–18
Cumberland County Schools	260386	Margaret Willis Elementary	Sandhills	Y	Y	Y
Cumberland County Schools	260396	Mary McArthur Elementary	Sandhills		Y	Y
Cumberland County Schools	260402	Manchester Elementary	Sandhills		Y	Y
Cumberland County Schools	260404	William H Owen Elementary	Sandhills	Y	Y	
Cumberland County Schools	260425	South View Middle	Sandhills	Y	Y	Y
Cumberland County Schools	260426	Sherwood Park Elementary	Sandhills		Y	Y
Cumberland County Schools	260428	Spring Lake Middle	Sandhills	Y	Y	Y
Cumberland County Schools	260440	Sunnyside Elementary	Sandhills	Y	Y	
Cumberland County Schools	260444	Teresa C Berrien Elementary	Sandhills	Y	Y	Y
Davidson County Schools	290328	Fair Grove Elementary	Piedmont-Triad	Y	Y	
Davidson County Schools	290367	South Davidson Middle	Piedmont-Triad	Y		Y
Duplin County Schools	310336	Warsaw Elementary	Southeast	Y	Y	
Durham Public Schools	320320	Glenn Elementary	North Central		Y	Y
Durham Public Schools	320338	James E Shepard Middle	North Central		Y	Y
Durham Public Schools	320339	Lakewood Elementary	North Central	Y		Y
Durham Public Schools	320344	Fayetteville Street Elementary	North Central		Y	Y
Durham Public Schools	320346	Lowe's Grove Middle	North Central		Y	Y
Durham Public Schools	320352	Merrick-Moore Elementary	North Central		Y	Y
Durham Public Schools	320355	Neal Middle	North Central	Y	Y	
Durham Public Schools	320362	Parkwood Elementary	North Central	Y	Y	Y
Durham Public Schools	320374	C C Spaulding Elementary	North Central	Y	Y	Y
Durham Public Schools	320388	W G Pearson Elementary	North Central	Y	Y	
Durham Public Schools	320400	Y E Smith Elementary	North Central	Y		Y
Edgecombe County Public School	330304	G W Bulluck Elementary	North Central	Y	Y	Y
Edgecombe County Public School	330312	Coker-Wimberly Elementary	North Central	Y	Y	Y
Edgecombe County Public School	330332	Phillips Middle	North Central		Y	Y
Edgecombe County Public School	330334	Princeville Elementary	North Central	Y	Y	Y
Edgecombe County Public School	330340	South Edgecombe Middle	North Central	Y	Y	Y
Edgecombe County Public School	330344	W A Pattillo Middle	North Central	Y		Y

District Name	School Code	School Name	State Board Region	Low Performing 2021–22	Low Performing 2018–19	Low Performing 2017–18
Edgecombe County Public School	330350	SouthWest Edgecombe High	North Central		Y	Y
Edgecombe County Public School	330354	Stocks Elementary	North Central	Y	Y	Y
Edgecombe County Public School	330358	Tarboro High	North Central	Y	Y	Y
Edgecombe County Public School	330360	Martin Millennium Academy	North Central	Y		Y
Forsyth County Schools	340308	Ashley Academy	Piedmont-Triad	Y	Y	Y
Forsyth County Schools	340314	Bolton Elementary	Piedmont-Triad	Y	Y	Y
Forsyth County Schools	340366	East Forsyth Middle School	Piedmont-Triad	Y	Y	Y
Forsyth County Schools	340368	Easton Elementary School	Piedmont-Triad		Y	Y
Forsyth County Schools	340372	Flat Rock Middle	Piedmont-Triad	Y	Y	
Forsyth County Schools	340376	Forest Park Elementary	Piedmont-Triad	Y	Y	Y
Forsyth County Schools	340390	Hall-Woodward Elementary	Piedmont-Triad	Y	Y	Y
Forsyth County Schools	340400	Ibrahim Elementary	Piedmont-Triad		Y	Y
Forsyth County Schools	340424	Kimberley Park Elementary	Piedmont-Triad	Y	Y	Y
Forsyth County Schools	340430	Diggs-Latham Elementary	Piedmont-Triad	Y	Y	Y
Forsyth County Schools	340452	Mineral Springs Middle	Piedmont-Triad	Y	Y	Y
Forsyth County Schools	340453	Moore Magnet Elementary	Piedmont-Triad	Y	Y	Y
Forsyth County Schools	340460	North Forsyth High	Piedmont-Triad	Y	Y	
Forsyth County Schools	340462	North Hills Elementary	Piedmont-Triad	Y		Y
Forsyth County Schools	340476	Old Town Elementary	Piedmont-Triad		Y	Y
Forsyth County Schools	340486	Parkland High	Piedmont-Triad	Y	Y	Y
Forsyth County Schools	340490	Petree Elementary	Piedmont-Triad		Y	Y
Forsyth County Schools	340492	Philo-Hill Magnet Academy	Piedmont-Triad	Y	Y	Y
Forsyth County Schools	340514	Smith Farm Elementary	Piedmont-Triad	Y	Y	Y
Forsyth County Schools	340516	Southeast Middle	Piedmont-Triad	Y		Y
Forsyth County Schools	340530	Speas Elementary	Piedmont-Triad	Y	Y	Y
Forsyth County Schools	340548	Ward Elementary	Piedmont-Triad	Y	Y	Y



District Name	School Code	School Name	State Board Region	Low Performing 2021–22	Low Performing 2018–19	Low Performing 2017–18
Forsyth County Schools	340564	Wiley Magnet Middle	Piedmont-Triad	Y		Y
Forsyth County Schools	340568	Winston-Salem Preparatory Acad	Piedmont-Triad	Y	Y	Y
Franklin County Schools	350324	Franklinton Middle	North Central	Y		Y
Gaston County Schools	360332	Bessemer City Central Elem	Southwest	Y	Y	Y
Gaston County Schools	360336	Bessemer City High	Southwest	Y	Y	
Gaston County Schools	360340	Brookside Elementary	Southwest		Y	Y
Gaston County Schools	360392	Edward D Sadler Jr Elementary School	Southwest	Y	Y	
Gaston County Schools	360408	W P Grier Middle School	Southwest	Y	Y	
Gaston County Schools	360436	Bessemer City Middle	Southwest	Y		Y
Gaston County Schools	360438	Lingerfeldt Elementary	Southwest	Y	Y	
Gaston County Schools	360480	Pleasant Ridge Elementary	Southwest	Y	Y	
Gaston County Schools	360490	Sherwood Elementary	Southwest	Y	Y	Y
Gaston County Schools	360492	H H Beam Elementary	Southwest	Y	Y	Y
Gaston County Schools	360520	Woodhill Elementary	Southwest	Y	Y	Y
Gaston County Schools	360526	York Chester Middle	Southwest	Y	Y	
Graham County Schools	380310	Robbinsville Middle	Western	Y		Y
Granville County Schools	390309	Butner-Stem Middle	North Central	Y	Y	Y
Granville County Schools	390312	C. G. Credle Elementary	North Central	Y	Y	
Granville County Schools	390316	Creedmoor Elementary	North Central	Y	Y	Y
Granville County Schools	390324	J. F. Webb High	North Central	Y		Y
Granville County Schools	390334	Northern Granville Middle	North Central	Y	Y	
Granville County Schools	390364	West Oxford Elementary	North Central	Y	Y	Y
Greene County Schools	400312	Greene County Middle	Southeast	Y	Y	Y
Greene County Schools	400332	West Greene Elementary	Southeast	Y	Y	Y
Guilford County Schools	410307	Edwin A Alderman Elementary	Piedmont-Triad	Y	Y	Y
Guilford County Schools	410310	Allen Jay Elementary	Piedmont-Triad	Y	Y	Y
Guilford County Schools	410313	Southern Guilford Middle	Piedmont-Triad	Y	Y	Y
Guilford County Schools	410316	Allen Middle	Piedmont-Triad	Y	Y	Y
Guilford County Schools	410325	Swann Middle School	Piedmont-Triad	Y	Y	Y
Guilford County Schools	410328	Bessemer Elementary	Piedmont-Triad	Y	Y	Y

<b>District Name</b>	<b>School Code</b>	<b>School Name</b>	<b>State Board Region</b>	<b>Low Performing 2021–22</b>	<b>Low Performing 2018–19</b>	<b>Low Performing 2017–18</b>
Guilford County Schools	410331	Bluford Elementary	Piedmont-Triad	Y	Y	Y
Guilford County Schools	410334	Brightwood Elementary	Piedmont-Triad	Y	Y	Y
Guilford County Schools	410340	Monticello-Brown Summit Elem	Piedmont-Triad	Y		Y
Guilford County Schools	410349	Ceasar Cone Elementary	Piedmont-Triad	Y	Y	Y
Guilford County Schools	410364	Fairview Elementary	Piedmont-Triad	Y		Y
Guilford County Schools	410366	Waldo C Falkener Sr Elementary	Piedmont-Triad	Y	Y	Y
Guilford County Schools	410367	Ferndale Middle	Piedmont-Triad	Y	Y	Y
Guilford County Schools	410373	Julius I Foust Elementary	Piedmont-Triad		Y	Y
Guilford County Schools	410376	Cyrus P Frazier Elementary	Piedmont-Triad	Y		Y
Guilford County Schools	410385	Gillespie Park Elementary	Piedmont-Triad	Y	Y	
Guilford County Schools	410397	Western Guilford Middle	Piedmont-Triad	Y	Y	Y
Guilford County Schools	410402	Otis L Hairston Sr Middle	Piedmont-Triad		Y	Y
Guilford County Schools	410412	Irving Park Elementary	Piedmont-Triad	Y		Y
Guilford County Schools	410415	Jackson Middle	Piedmont-Triad		Y	Y
Guilford County Schools	410427	Johnson Street Global Studies	Piedmont-Triad	Y		Y
Guilford County Schools	410436	James Y Joyner Elementary	Piedmont-Triad	Y		Y
Guilford County Schools	410439	Kirkman Park Elementary	Piedmont-Triad	Y	Y	Y
Guilford County Schools	410454	Madison Elementary	Piedmont-Triad	Y		Y
Guilford County Schools	410460	Eastern Guilford Middle	Piedmont-Triad	Y	Y	Y
Guilford County Schools	410462	Ronald E. McNair Elementary	Piedmont-Triad	Y	Y	Y
Guilford County Schools	410469	Montlieu Academy of Technology	Piedmont-Triad	Y	Y	
Guilford County Schools	410478	Murphey Traditional Academy	Piedmont-Triad	Y	Y	Y
Guilford County Schools	410487	Northeast Guilford Middle	Piedmont-Triad	Y		Y
Guilford County Schools	410496	Northwood Elementary	Piedmont-Triad	Y	Y	Y
Guilford County Schools	410505	Oak View Elementary	Piedmont-Triad	Y	Y	Y
Guilford County Schools	410511	Parkview Village Elementary	Piedmont-Triad	Y	Y	

District Name	School Code	School Name	State Board Region	Low Performing 2021–22	Low Performing 2018–19	Low Performing 2017–18
Guilford County Schools	410514	Clara J Peck Elementary	Piedmont-Triad	Y	Y	Y
Guilford County Schools	410517	Peeler Open Elementary	Piedmont-Triad		Y	Y
Guilford County Schools	410530	Reedy Fork Elementary	Piedmont-Triad	Y	Y	Y
Guilford County Schools	410532	Rankin Elementary	Piedmont-Triad	Y	Y	Y
Guilford County Schools	410538	Sedgefield Elementary	Piedmont-Triad	Y	Y	Y
Guilford County Schools	410542	George C Simkins Jr Elementary	Piedmont-Triad	Y	Y	
Guilford County Schools	410544	Ben L. Smith High School	Piedmont-Triad		Y	Y
Guilford County Schools	410577	Sumner Elementary	Piedmont-Triad	Y	Y	Y
Guilford County Schools	410578	Triangle Lake Montessori Elem	Piedmont-Triad	Y		Y
Guilford County Schools	410583	Vandalia Elementary	Piedmont-Triad	Y	Y	Y
Guilford County Schools	410586	Washington Elementary	Piedmont-Triad	Y		Y
Guilford County Schools	410592	Welborn Middle	Piedmont-Triad		Y	Y
Guilford County Schools	410598	Wiley Accel/Enrichment	Piedmont-Triad	Y	Y	Y
Halifax County Schools	420316	Scotland Neck Elementary Leadership Acad	Northeast		Y	Y
Halifax County Schools	420324	Enfield Middle S.T.E.A.M. Academy	Northeast	Y	Y	Y
Halifax County Schools	420328	Everetts Elementary S.T.E.M. Academy	Northeast	Y	Y	
Halifax County Schools	420346	Northwest Halifax Collegiate and Technic	Northeast	Y		Y
Halifax County Schools	420348	Pittman Elementary Leadership Academy	Northeast	Y		Y
Halifax County Schools	420358	Southeast Halifax Collegiate Prep Academ	Northeast	Y	Y	Y
Halifax County Schools	420376	William R Davie Middle S.T.E.M. Academy	Northeast	Y	Y	Y
Harnett County Schools	430316	Boone Trail Elementary	North Central	Y	Y	Y
Harnett County Schools	430332	Dunn Middle	North Central		Y	Y
Harnett County Schools	430336	Erwin Elementary at Gentry	North Central	Y	Y	
Harnett County Schools	430344	Harnett Primary	North Central	Y	Y	
Harnett County Schools	430347	Harnett Central Middle	North Central	Y	Y	Y
Harnett County Schools	430351	Highland Middle	North Central	Y		Y

<b>District Name</b>	<b>School Code</b>	<b>School Name</b>	<b>State Board Region</b>	<b>Low Performing 2021–22</b>	<b>Low Performing 2018–19</b>	<b>Low Performing 2017–18</b>
Harnett County Schools	430358	Lillington-Shawtown Elementary	North Central	Y		Y
Harnett County Schools	430376	South Harnett Elementary	North Central	Y	Y	
Harnett County Schools	430380	Wayne Avenue Elementary	North Central	Y	Y	Y
Hertford County Schools	460308	Ahoskie Elementary	Northeast	Y	Y	Y
Hertford County Schools	460318	Hertford County Middle	Northeast	Y		Y
Hertford County Schools	460320	Hertford County High	Northeast	Y	Y	
Hertford County Schools	460332	Riverview Elementary	Northeast	Y	Y	Y
Hoke County Schools	470316	J W McLauchlin Elementary	Sandhills	Y		Y
Hoke County Schools	470320	West Hoke Middle	Sandhills	Y		Y
Hoke County Schools	470332	East Hoke Middle	Sandhills	Y	Y	Y
Iredell-Statesville Schools	490319	Cloverleaf Elementary	Southwest	Y	Y	Y
Iredell-Statesville Schools	490327	East Iredell Middle	Southwest	Y		Y
Iredell-Statesville Schools	490345	N B Mills Elementary	Southwest	Y	Y	Y
Iredell-Statesville Schools	490352	Third Creek Middle	Southwest	Y	Y	Y
Iredell-Statesville Schools	490354	Statesville High	Southwest	Y	Y	Y
Jackson County Schools	500316	Blue Ridge School	Western	Y	Y	
Jackson County Schools	500337	Smokey Mountain Elementary	Western	Y	Y	Y
Johnston County Schools	510308	Benson Elementary	North Central		Y	Y
Johnston County Schools	510310	Benson Middle	North Central		Y	Y
Johnston County Schools	510326	West Clayton Elementary	North Central	Y	Y	Y
Johnston County Schools	510330	Cooper Academy	North Central		Y	Y
Johnston County Schools	510332	Corinth-Holders Elementary	North Central		Y	Y
Johnston County Schools	510343	Micro Elementary	North Central		Y	Y
Johnston County Schools	510344	North Johnston Middle	North Central		Y	Y
Johnston County Schools	510390	Selma Middle School	North Central		Y	Y
Johnston County Schools	510396	West Smithfield Elementary	North Central	Y	Y	Y
Johnston County Schools	510397	Smithfield Middle	North Central		Y	Y
Johnston County Schools	510399	Smithfield-Selma High	North Central	Y		Y
Johnston County Schools	510404	South Smithfield Elementary	North Central	Y	Y	Y
Johnston County Schools	510408	Wilson's Mills Elementary	North Central		Y	Y

District Name	School Code	School Name	State Board Region	Low Performing 2021–22	Low Performing 2018–19	Low Performing 2017–18
Johnston County Schools	510412	Clayton Middle	North Central		Y	Y
Kannapolis City Schools	132304	A L Brown High	Southwest	Y		Y
Kannapolis City Schools	132314	GW Carver Elementary	Southwest	Y	Y	Y
Kannapolis City Schools	132330	Kannapolis Middle	Southwest	Y	Y	
Kannapolis City Schools	132332	Shady Brook Elementary	Southwest	Y		Y
Lee County Schools	530314	East Lee Middle	North Central	Y	Y	
Lee County Schools	530356	West Lee Middle	North Central	Y	Y	
Lenoir County Public Schools	540315	Kinston High	Southeast	Y	Y	Y
Lenoir County Public Schools	540324	North Lenoir High	Southeast	Y		Y
Lenoir County Public Schools	540325	Northeast Elementary	Southeast	Y	Y	Y
Lenoir County Public Schools	540330	Rochelle Middle	Southeast	Y	Y	Y
Lenoir County Public Schools	540338	Southeast Elementary	Southeast	Y	Y	Y
Lexington City Schools	291332	Lexington Middle School	Piedmont-Triad	Y		Y
Lexington City Schools	291352	Southwest Elementary Global Academy	Piedmont-Triad	Y	Y	
Lincoln County Schools	550312	Battleground Elementary	Southwest	Y	Y	
Macon County Schools	560316	East Franklin Elementary	Western		Y	Y
Martin County Schools	580312	E J Hayes Elementary	Northeast	Y	Y	Y
Martin County Schools	580316	South Creek Elementary	Northeast	Y	Y	Y
Martin County Schools	580344	South Creek High	Northeast	Y	Y	
Martin County Schools	580372	Riverside Middle	Northeast	Y	Y	Y
Montgomery County Schools	620339	West Middle	Sandhills	Y	Y	Y
Moore County Schools	630308	Aberdeen Elementary	Sandhills	Y	Y	
Moore County Schools	630348	Robbins Elementary	Sandhills	Y	Y	Y
Moore County Schools	630350	Southern Middle	Sandhills		Y	Y
Mount Airy City Schools	862310	Jones Intermediate	Piedmont-Triad	Y	Y	
Nash County Public Schools	640306	Baskerville Elementary	North Central	Y	Y	Y
Nash County Public Schools	640308	Benvenue Elementary	North Central	Y	Y	Y
Nash County Public Schools	640316	Cedar Grove Elementary	North Central	Y		Y
Nash County Public Schools	640320	Nash Central Middle	North Central	Y	Y	Y
Nash County Public Schools	640326	D S Johnson Elementary	North Central	Y	Y	Y

District Name	School Code	School Name	State Board Region	Low Performing 2021–22	Low Performing 2018–19	Low Performing 2017–18
Nash County Public Schools	640328	Englewood Elementary	North Central	Y	Y	Y
Nash County Public Schools	640329	G R Edwards Middle	North Central		Y	Y
Nash County Public Schools	640334	J W Parker Middle	North Central	Y	Y	Y
Nash County Public Schools	640335	Rocky Mount Middle	North Central		Y	Y
Nash County Public Schools	640336	Middlesex Elementary	North Central	Y	Y	Y
Nash County Public Schools	640346	Nash Central High	North Central	Y	Y	
Nash County Public Schools	640361	Rocky Mount High	North Central	Y	Y	
Nash County Public Schools	640376	Spring Hope Elementary	North Central	Y	Y	Y
New Hanover County Schools	650312	R Freeman Sch of Engineering	Southeast	Y	Y	Y
New Hanover County Schools	650328	Forest Hills Global Elementary	Southeast	Y	Y	Y
New Hanover County Schools	650384	A H Snipes Academy of Arts/Des	Southeast	Y	Y	Y
New Hanover County Schools	650392	Williston Middle	Southeast	Y	Y	Y
New Hanover County Schools	650404	Wrightsboro Elementary	Southeast	Y	Y	Y
Northampton County Schools	660306	Central Elementary	Northeast	Y		Y
Northampton County Schools	660308	Conway Middle	Northeast		Y	Y
Northampton County Schools	660320	Gaston STEM Leadership Academy	Northeast	Y	Y	Y
Northampton County Schools	660336	Northampton County High School	Northeast	Y	Y	Y
Northampton County Schools	660360	Willis Hare Elementary	Northeast	Y	Y	Y
Onslow County Schools	670308	Blue Creek Elementary	Southeast	Y	Y	Y
Onslow County Schools	670312	Clyde Erwin Elementary	Southeast	Y	Y	Y
Onslow County Schools	670322	Hunters Creek Middle	Southeast	Y	Y	
Onslow County Schools	670337	Heritage Elementary School	Southeast	Y	Y	
Pamlico County Schools	690312	Fred A Anderson Elementary	Southeast	Y		Y
Pasquotank County Schools	700308	Elizabeth City Middle	Northeast		Y	Y
Pasquotank County Schools	700318	Pasquotank Elementary	Northeast	Y	Y	Y
Pasquotank County Schools	700319	Pasquotank County High	Northeast	Y	Y	
Pasquotank County Schools	700320	P W Moore Elementary	Northeast	Y	Y	Y
Pender County Schools	710332	Rocky Point Elementary	Southeast	Y		Y
Pender County Schools	710348	West Pender Middle	Southeast	Y	Y	Y

District Name	School Code	School Name	State Board Region	Low Performing 2021–22	Low Performing 2018–19	Low Performing 2017–18
Person County Schools	730344	Northern Middle	North Central	Y	Y	Y
Person County Schools	730356	South Elementary	North Central		Y	Y
Pitt County Schools	740310	Belvoir Elementary	Northeast	Y	Y	Y
Pitt County Schools	740324	C M Eppes Middle	Northeast		Y	Y
Pitt County Schools	740337	E B Aycock Middle	Northeast	Y		Y
Pitt County Schools	740340	Farmville Middle	Northeast	Y		Y
Pitt County Schools	740352	Grifton	Northeast	Y	Y	
Pitt County Schools	740368	Lakeforest Elementary	Northeast	Y	Y	
Pitt County Schools	740375	Northwest Elementary	Northeast	Y	Y	Y
Pitt County Schools	740390	South Greenville Elementary	Northeast	Y	Y	Y
Pitt County Schools	740400	Wahl Coates Elementary	Northeast	Y	Y	Y
Pitt County Schools	740402	Wellcome Middle	Northeast	Y		Y
Randolph County Schools	760324	Franklinville Elementary School	Piedmont-Triad	Y	Y	
Randolph County Schools	760332	Liberty Elementary School	Piedmont-Triad	Y	Y	Y
Randolph County Schools	760357	Southeastern Randolph Middle School	Piedmont-Triad	Y	Y	Y
Randolph County Schools	760382	Uwharrie Ridge Six-Twelve	Piedmont-Triad	Y	Y	Y
Robeson County Schools	780320	Deep Branch Elementary	Sandhills	Y	Y	Y
Robeson County Schools	780326	Fairmont Middle	Sandhills	Y	Y	
Robeson County Schools	780330	L Gilbert Carroll	Sandhills	Y	Y	Y
Robeson County Schools	780341	Lumberton Junior	Sandhills	Y	Y	Y
Robeson County Schools	780352	Orrum Middle	Sandhills	Y	Y	Y
Robeson County Schools	780360	Parkton Elementary	Sandhills	Y	Y	Y
Robeson County Schools	780364	Pembroke Elementary	Sandhills	Y	Y	
Robeson County Schools	780374	Peterson Elementary	Sandhills	Y	Y	Y
Robeson County Schools	780376	Piney Grove Elementary	Sandhills	Y	Y	Y
Robeson County Schools	780392	Rex-Rennert Elementary	Sandhills	Y	Y	
Robeson County Schools	780393	Red Springs Middle	Sandhills	Y	Y	
Robeson County Schools	780394	Rosenwald Elementary	Sandhills	Y	Y	
Robeson County Schools	780400	Saint Pauls Elementary	Sandhills		Y	Y
Robeson County Schools	780410	Townsend	Sandhills	Y	Y	Y
Robeson County Schools	780417	W H Knuckles	Sandhills	Y	Y	
Rockingham County Schools	790374	Reidsville Middle	Piedmont-Triad		Y	Y
Rockingham County Schools	790386	South End Elementary	Piedmont-Triad	Y	Y	

District Name	School Code	School Name	State Board Region	Low Performing 2021–22	Low Performing 2018–19	Low Performing 2017–18
Rowan-Salisbury Schools	800314	Erwin Middle	Southwest	Y	Y	Y
Rowan-Salisbury Schools	800315	Overton Elementary	Southwest	Y	Y	Y
Rowan-Salisbury Schools	800316	China Grove Elementary	Southwest	Y	Y	
Rowan-Salisbury Schools	800328	Corriher Lipe Middle	Southwest	Y	Y	Y
Rowan-Salisbury Schools	800346	Koontz Elementary	Southwest	Y	Y	Y
Rowan-Salisbury Schools	800358	Isenberg Elementary	Southwest	Y		Y
Rowan-Salisbury Schools	800359	Dole Elementary	Southwest	Y	Y	Y
Rowan-Salisbury Schools	800360	Hurley Elementary	Southwest	Y	Y	Y
Rowan-Salisbury Schools	800362	Knollwood Elementary	Southwest	Y	Y	Y
Rowan-Salisbury Schools	800363	Knox Middle	Southwest	Y	Y	Y
Rowan-Salisbury Schools	800373	North Rowan Elementary	Southwest	Y	Y	Y
Rowan-Salisbury Schools	800376	North Rowan High	Southwest	Y	Y	Y
Rowan-Salisbury Schools	800377	North Rowan Middle	Southwest	Y	Y	Y
Rowan-Salisbury Schools	800396	Salisbury High	Southwest	Y	Y	
Rowan-Salisbury Schools	800398	Southeast Middle	Southwest	Y	Y	Y
Rowan-Salisbury Schools	800410	West Rowan Middle	Southwest	Y	Y	Y
Scotland County Schools	830304	Carver Middle	Sandhills	Y	Y	
Scotland County Schools	830328	Laurel Hill Elementary	Sandhills	Y	Y	
Scotland County Schools	830360	Wagram Elementary	Sandhills	Y	Y	
Scotland County Schools	830364	Sycamore Lane Elementary	Sandhills	Y	Y	Y
Stanly County Schools	840303	Albemarle Middle	Southwest	Y		Y
Stanly County Schools	840312	Endy Elementary	Southwest	Y		Y
Stanly County Schools	840336	Norwood Elementary	Southwest	Y		Y
Stanly County Schools	840358	South Stanly Middle	Southwest	Y		Y
Stokes County Schools	850312	Germanton Elementary School	Piedmont-Triad	Y	Y	
Thomasville City Schools	292316	Liberty Drive Elementary	Piedmont-Triad	Y	Y	Y
Thomasville City Schools	292318	Thomasville Primary	Piedmont-Triad	Y		Y
Tyrrell County Schools	890306	Columbia Middle	Northeast	Y	Y	Y
Tyrrell County Schools	890308	Tyrrell Elementary	Northeast	Y	Y	Y
Union County Public Schools	900304	Benton Heights Elementary	Southwest	Y		Y
Union County Public Schools	900306	East Elementary	Southwest	Y		Y
Union County Public Schools	900308	East Union Middle	Southwest	Y	Y	Y
Union County Public Schools	900314	Monroe Middle	Southwest	Y	Y	Y



<b>District Name</b>	<b>School Code</b>	<b>School Name</b>	<b>State Board Region</b>	<b>Low Performing 2021–22</b>	<b>Low Performing 2018–19</b>	<b>Low Performing 2017–18</b>
Vance County Schools	910316	Vance County Middle School	North Central	Y	Y	Y
Vance County Schools	910340	New Hope Elementary	North Central	Y	Y	Y
Vance County Schools	910346	E O Young Jr Elementary	North Central	Y	Y	Y
Vance County Schools	910360	E M Rollins Elementary	North Central	Y	Y	
Vance County Schools	910370	Vance County High School	North Central	Y	Y	Y
Wake County Schools	920320	Aversboro Elementary	North Central	Y	Y	Y
Wake County Schools	920326	Baileywick Road Elementary	North Central	Y	Y	
Wake County Schools	920329	Barwell Road Elementary	North Central		Y	Y
Wake County Schools	920332	Beaverdam Elementary	North Central		Y	Y
Wake County Schools	920352	Bugg Elementary	North Central		Y	Y
Wake County Schools	920370	Centennial Campus Middle	North Central	Y	Y	
Wake County Schools	920394	Dillard Drive Middle	North Central	Y	Y	
Wake County Schools	920403	East Garner Elementary	North Central	Y	Y	Y
Wake County Schools	920404	East Garner Middle	North Central	Y		Y
Wake County Schools	920408	East Millbrook Middle	North Central	Y	Y	Y
Wake County Schools	920410	Neuse River Middle	North Central	Y	Y	Y
Wake County Schools	920413	Forestville Road Elementary	North Central		Y	Y
Wake County Schools	920440	Green Elementary	North Central	Y	Y	Y
Wake County Schools	920446	Hodge Road Elementary	North Central		Y	Y
Wake County Schools	920466	Knightdale High	North Central	Y		Y
Wake County Schools	920480	Lockhart Elementary	North Central	Y	Y	
Wake County Schools	920496	Millbrook Elementary	North Central	Y	Y	
Wake County Schools	920536	Powell Elementary	North Central	Y	Y	Y
Wake County Schools	920547	Rogers Lane Elementary	North Central		Y	Y
Wake County Schools	920549	River Bend Middle	North Central		Y	Y
Wake County Schools	920560	Smith Elementary	North Central	Y		Y

<b>District Name</b>	<b>School Code</b>	<b>School Name</b>	<b>State Board Region</b>	<b>Low Performing 2021–22</b>	<b>Low Performing 2018–19</b>	<b>Low Performing 2017–18</b>
Wake County Schools	920570	Timber Drive Elementary	North Central		Y	Y
Wake County Schools	920597	Wakelon Elementary	North Central	Y	Y	
Wake County Schools	920599	Walnut Creek Elementary	North Central		Y	Y
Wake County Schools	920600	Wendell Elementary	North Central	Y	Y	Y
Wake County Schools	920601	Wendell Middle	North Central		Y	Y
Wake County Schools	920616	Wilburn Elementary	North Central	Y	Y	Y
Wake County Schools	920632	Zebulon Elementary	North Central	Y	Y	Y
Warren County Schools	930340	Northside K-8	North Central	Y	Y	Y
Warren County Schools	930348	Vaughan Elementary	North Central	Y		Y
Warren County Schools	930352	Warren County High	North Central	Y	Y	
Warren County Schools	930354	Warren County Middle	North Central	Y	Y	Y
Washington County Schools	940306	Creswell Elementary	Northeast	Y	Y	
Washington County Schools	940314	Pines Elementary	Northeast	Y	Y	Y
Washington County Schools	940316	Washington County High	Northeast	Y		Y
Wayne County Public Schools	960312	Brogden Middle	Southeast	Y	Y	Y
Wayne County Public Schools	960314	Brogden Primary	Southeast	Y		Y
Wayne County Public Schools	960316	Carver Elementary	Southeast		Y	Y
Wayne County Public Schools	960318	Carver Heights Elementary	Southeast	Y		Y
Wayne County Public Schools	960326	Dillard Middle	Southeast	Y	Y	Y
Wayne County Public Schools	960329	Eastern Wayne Elementary	Southeast	Y	Y	Y
Wayne County Public Schools	960331	Eastern Wayne Middle	Southeast	Y	Y	Y
Wayne County Public Schools	960335	Goldsboro High	Southeast	Y	Y	Y
Wayne County Public Schools	960338	Grantham Middle	Southeast	Y	Y	Y
Wayne County Public Schools	960348	Mount Olive Middle	Southeast	Y		Y
Wayne County Public Schools	960380	Southern Wayne High	Southeast	Y	Y	
Weldon City Schools	422314	Weldon Elementary Global Academy	Northeast	Y	Y	Y
Weldon City Schools	422315	Weldon STEM High School Career Academies	Northeast	Y	Y	Y

<b>District Name</b>	<b>School Code</b>	<b>School Name</b>	<b>State Board Region</b>	<b>Low Performing 2021–22</b>	<b>Low Performing 2018–19</b>	<b>Low Performing 2017–18</b>
Wilson County Schools	980308	B O Barnes Elementary	North Central		Y	Y
Wilson County Schools	980344	John W Jones Elementary	North Central	Y		Y
Wilson County Schools	980356	Margaret Hearne Elementary	North Central	Y	Y	Y
Wilson County Schools	980357	Vick Elementary	North Central	Y	Y	Y
Wilson County Schools	980390	Toisnot Middle	North Central	Y	Y	Y

### ***2021-2022 Continually Low Performing Charter Schools List***

A continually low-performing charter school is identified as low-performing in any two of the last three years. The years used for this list are the 2017–18, 2018–19 and 2021–22 school years, as 2019–20 and 2020–21 do not have data. A low-performing charter has a school performance grade of 'D' or 'F', and a growth status of 'Met' or 'Not Met'.

<b>District Name</b>	<b>School Code</b>	<b>School Name</b>	<b>State Board Region</b>	<b>Low Performing 2021–22</b>	<b>Low Performing 2018–19</b>	<b>Low Performing 2017–18</b>
Charter Schools	00A000	North Carolina Cyber Academy	Virtual	Y	Y	Y
Charter Schools	00B000	NC Virtual Academy	Virtual	Y	Y	Y
Charter Schools	06B000	Marjorie Williams Academy	Northwest		Y	Y
Charter Schools	09A000	Paul R. Brown Leadership Academy	Sandhills	Y	Y	Y
Charter Schools	13B000	Cabarrus Charter Academy	Southwest	Y	Y	
Charter Schools	13C000	A.C.E. Academy	Southwest	Y	Y	Y
Charter Schools	26C000	The Capitol Encore Academy	Sandhills	Y	Y	
Charter Schools	29A000	Davidson Charter Academy	Piedmont-Triad	Y	Y	
Charter Schools	32C000	Community School of Digital & Visual Art	North Central	Y	Y	
Charter Schools	32H000	Research Triangle Charter	North Central	Y		Y
Charter Schools	32M000	Global Scholars Academy	North Central	Y	Y	
Charter Schools	32P000	The Institute Development Young Leaders	North Central	Y	Y	Y
Charter Schools	34D000	Carter G. Woodson School	Piedmont-Triad	Y	Y	
Charter Schools	41L000	Gate City Charter	Piedmont-Triad	Y	Y	
Charter Schools	41N000	The Experiential School of Greensboro	Piedmont-Triad	Y	Y	
Charter Schools	42A000	KIPP Halifax College Preparatory	Northeast	Y	Y	Y
Charter Schools	49D000	Success Institute Charter	Southwest	Y	Y	
Charter Schools	54A000	Children's Village Academy	Southeast	Y	Y	Y
Charter Schools	60K000	Charlotte Secondary	Southwest	Y		Y
Charter Schools	60L000	KIPP Charlotte	Southwest	Y	Y	Y
Charter Schools	60N000	Aristotle Preparatory Academy	Southwest	Y		Y
Charter Schools	60P000	Eastside STREAM Academy	Southwest	Y	Y	
Charter Schools	60Q000	Invest Collegiate Transform	Southwest	Y	Y	
Charter Schools	61K000	United Community School	Southwest	Y		Y
Charter Schools	61P000	VERITAS Community School, CFA	Southwest	Y	Y	
Charter Schools	61T000	Movement Charter School	Southwest	Y	Y	
Charter Schools	61U000	UpROAR Leadership Academy	Southwest	Y	Y	Y
Charter Schools	64A000	Rocky Mount Preparatory	North Central	Y	Y	Y
Charter Schools	65B000	Wilmington Preparatory Academy	Southeast	Y		Y
Charter Schools	65C000	Classical Charter Schools of Wilmington	Southeast	Y	Y	Y
Charter Schools	65F000	American Leadership Academy-Coastal	Southeast	Y		Y
Charter Schools	65G000	Girls Leadership Academy of Wilmington	Southeast	Y	Y	Y

<b>District Name</b>	<b>School Code</b>	<b>School Name</b>	<b>State Board Region</b>	<b>Low Performing 2021–22</b>	<b>Low Performing 2018–19</b>	<b>Low Performing 2017–18</b>
Charter Schools	00A000	North Carolina Cyber Academy	Virtual	Y	Y	Y
Charter Schools	67B000	Z.E.C.A. School of Arts and Technology	Southeast	Y	Y	Y
Charter Schools	93A000	Haliwa-Saponi Tribal School	North Central	Y	Y	Y
Charter Schools	93J000	RISE Southeast Raleigh Charter	North Central	Y	Y	Y

***CARES Intensive Intervention Pilot 2021-2022***

<b>District Name</b>	<b>School Code</b>	<b>School Name</b>
Anson County Schools	40306	Anson High School
Anson County Schools	40309	Anson Middle
Anson County Schools	40311	Wadesboro Primary
Anson County Schools	40324	Morven Elementary
Anson County Schools	40330	Wadesboro Elementary
Bertie County Schools	80312	Bertie High
Bladen County Schools	090328	East Arcadia Elementary
Brunswick County Schools	100338	Supply Elementary
Charlotte-Mecklenburg Schools	600489	Bruns Avenue Elementary
Columbus County Schools	240376	Tabor City Middle
Cumberland County Schools	260336	Anne Chesnutt Middle
Cumberland County Schools	260358	Luther Nick Jeralds Middle
Cumberland County Schools	260372	Lewis Chapel Middle
Cumberland County Schools	260402	Manchester Elementary
Durham Public Schools	320344	Fayetteville Street Elementary
Durham Public Schools	320346	Lowe's Grove Middle
Guilford County Schools	410439	Kirkman Park Elementary
Halifax County Schools	420316	Scotland Neck Elementary Leadership Academy
Halifax County Schools	420324	Enfield Middle S.T.E.A.M. Academy
Halifax County Schools	420376	William R Davie Middle S.T.E.M. Academy
Hertford County Schools	460308	Ahoskie Elementary
Hertford County Schools	460332	Riverview Elementary
Iredell-Statesville Schools	490319	Cloverleaf Elementary
Martin County Schools	580312	E J Hayes Elementary
Martin County Schools	580316	South Creek Elementary
Nash County Public Schools	640306	Baskerville Elementary
Nash County Public Schools	640308	Benvenue Elementary
Nash County Public Schools	640320	Nash Central Middle
Nash County Public Schools	640326	D S Johnson Elementary
Nash County Public Schools	640328	Englewood Elementary
Nash County Public Schools	640329	G R Edwards Middle
Nash County Public Schools	640334	J W Parker Middle
Nash County Public Schools	640335	Rocky Mount Middle
Nash County Public Schools	640336	Middlesex Elementary
Nash County Public Schools	640342	CITI High School

District Name	School Code	School Name
Nash County Public Schools	640346	Nash Central High
Nash County Public Schools	640361	Rocky Mount High
Nash County Public Schools	640376	Spring Hope Elementary
Northampton County Schools	660308	Conway Middle
Northampton County Schools	660320	Gaston Elementary (Now Gaston STEM Leadership Academy)
Northampton County Schools	660325	Gaston Middle (closed)
Northampton County Schools	660336	Northampton County High School
Northampton County Schools	660360	Willis Hare Elementary
Pender County Schools	710348	West Pender Middle
Pitt County Schools	740310	Belvoir Elementary
Pitt County Schools	740324	C M Eppes Middle
Public Schools of Robeson County	780320	Deep Branch Elementary
Public Schools of Robeson County	780326	Fairmont Middle
Public Schools of Robeson County	780330	L Gilbert Carroll Middle
Public Schools of Robeson County	780336	Littlefield Middle
Public Schools of Robeson County	780341	Lumberton Junior High
Public Schools of Robeson County	780352	Orrum Middle
Public Schools of Robeson County	780360	Parkton Elementary
Public Schools of Robeson County	780364	Pembroke Elementary
Public Schools of Robeson County	780368	Pembroke Middle
Public Schools of Robeson County	780374	Peterson Elementary
Public Schools of Robeson County	780376	Piney Grove Elementary
Public Schools of Robeson County	780392	Rex-Rennert Elementary
Public Schools of Robeson County	780393	Red Springs Middle
Public Schools of Robeson County	780394	Rosenwald Elementary
Public Schools of Robeson County	780400	Saint Pauls Elementary
Public Schools of Robeson County	780410	Townsend Middle
Public Schools of Robeson County	780412	Union Chapel Elementary
Public Schools of Robeson County	780417	W H Knuckles
Thomasville City Schools	292316	Liberty Drive Elementary
Tyrrell County Schools	890304	Columbia High
Tyrrell County Schools	890306	Columbia Middle
Tyrrell County Schools	890308	Tyrrell Elementary
Vance County Schools	910316	Vance County Middle School
Vance County Schools	910346	E O Young Jr Elementary
Washington County Schools	940306	Creswell Elementary
Washington County Schools	940314	Pines Elementary

District Name	School Code	School Name
Wayne County Public Schools	960312	Brogden Middle
Wayne County Public Schools	960316	Carver Elementary
Wayne County Public Schools	960329	Eastern Wayne Elementary
Winston- Salem Forsyth County Schools	340368	Easton Elementary School
Winston- Salem Forsyth County Schools	340400	Ibrahim Elementary
Winston- Salem Forsyth County Schools	340430	Diggs-Latham Elementary
Winston- Salem Forsyth County Schools	340452	Mineral Springs Middle
Winston- Salem Forsyth County Schools	340492	Philo-Hill Magnet Academy
Winston- Salem Forsyth County Schools	340568	Winston-Salem Preparatory Acad