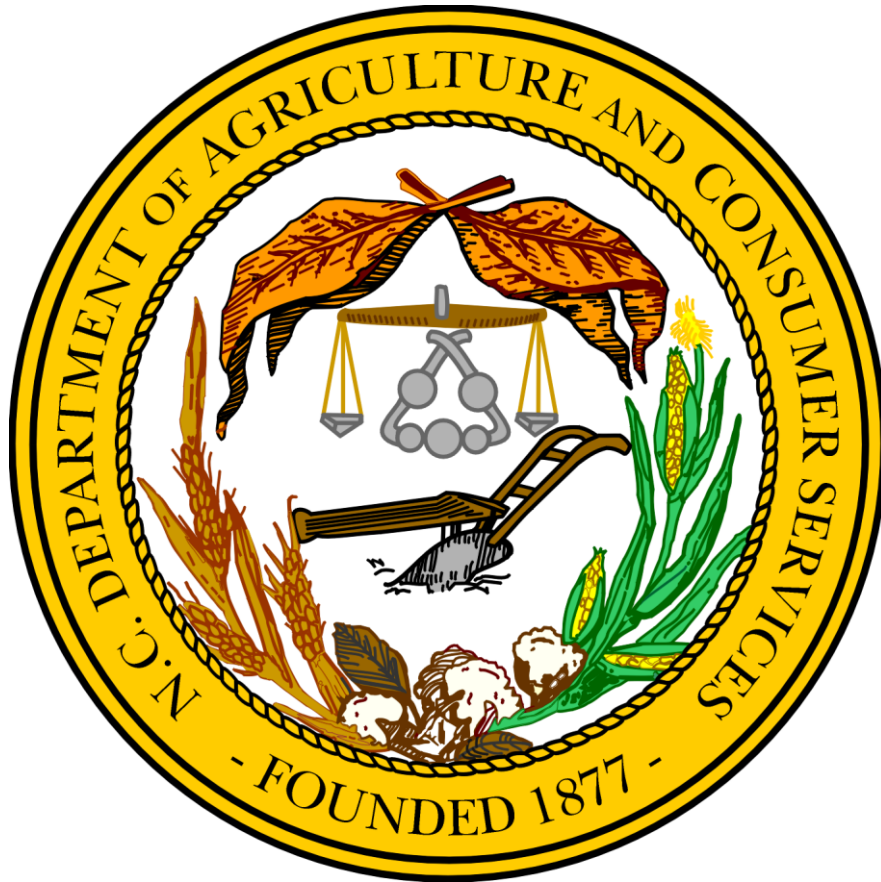


**NCDA&CS, Veterinary Division, Animal Welfare Section**



**Spay/Neuter Program Legislative Report, Calendar Year-2015**

# **Spay/Neuter Program Legislative Report, Calendar Year-2015**

## **Purpose of Report**

Pursuant to NC General Statute § 19A-62 (c), this is the legislative report for the NC Spay/Neuter Program.

### **§ 19A-62. Spay/Neuter Account established.**

(c) Report. – In March of each year, the Department must report to the Joint Legislative Commission on Governmental Operations and the Fiscal Research Division. The report must contain information regarding all revenues and expenditures of the Spay/Neuter Account.

## **Executive Summary**

In calendar year (CY) 2015, the Spay/Neuter Program paid a sum of \$404,440.21 in aid to a total of 43 local governments for the costs of 10,065 spay/neuter procedures. These are the lowest numbers for this program since 2012. Most notable in CY 2015 were changes to Spay/Neuter statutes that were passed in September of 2015 in S.L. 2015-241 (please see the section 2015 Changes to Spay/Neuter Statutes below for the language associated with these changes). Forty-two (42) counties/municipalities participated in at least one of the first three quarters of CY 2015. In the fourth quarter, that number fell to 26 participating counties/municipalities. The first three quarters averaged 2,909 procedures for which reimbursement was sought; in the fourth quarter of 2015, reimbursement was requested for only 1,337 procedures.

## **Background**

The NC Spay/Neuter program was established in 2000 at the Department of Health and Human Services (DHHS) for the purpose of providing voluntary financial assistance to counties and municipalities offering low-income persons reduced cost spay/neuter services and to provide statewide education and outreach on the benefits of spaying/neutering. To accomplish the goals of the program, a non-reverting special revenue account, the Spay/Neuter Fund, was established. This fund received a portion of fees from state rabies tags, revenue from the sale of specialty license plates, and donations. The NC Spay/Neuter program was then transferred to the North Carolina Department of Agriculture and Consumer Services in S.L. 2010-31, eliminating access to revenues from the sale of rabies tags but providing revenue from over-realized receipts from the licensing of pet food products. Currently, up to 20% of the funds may be used for an education program and an additional 20% for the funds may be used to defray the costs of administering the program. Local governments may apply for reimbursement for costs directly related to the spaying/neutering of dogs/cats owned by low-income individuals on a quarterly basis. For the first through third quarters of CY 2015, a “low-income person” was defined as one whose annual household income is below 300% of the federal poverty guidelines or one who qualifies for one or more programs of public assistance administered by the DHHS. In September of 2015, the General Assembly passed changes to the definition of “low-income person” to one whose annual household

## Spay/Neuter Program Legislative Report, Calendar Year-2015

income is below 100% of the federal poverty limit. More information regarding changes in the Spay/Neuter statutes is available later in this report. Participation for the last five years is as follows:

- 2011
  - o 27 counties/municipalities requested reimbursement for 8,304 spay/neuter procedures
  - o Reimbursed \$388,954.47
- 2012
  - o 28 counties/municipalities requested reimbursement for 9,529 spay/neuter procedures
  - o Reimbursed \$549,585.00
- 2013
  - o 41 counties/municipalities requested reimbursement for 13,052 spay/neuter procedures
  - o Reimbursed \$427,028.36
- 2014
  - o 41 counties/municipalities requested reimbursement for 11,873 spay/neuter procedures
  - o Reimbursed \$418,604.57
- 2015
  - o 43 counties/municipalities requested reimbursement for 10,065 spay/neuter procedures
  - o Reimbursed \$404,440.21

### 2013 Changes to Spay/Neuter Statutes

S.L. 2013-377, Recodify Animal Shelter Law, made various changes to the Animal Welfare Act, including providing a reimbursement cap on the amount of each surgical procedure. These changes to the Spay/Neuter statutes have made a profound difference for smaller counties/municipalities that were otherwise struggling to receive fair reimbursement percentages, and have helped distribute the limited available funds further. Figure 1, a chart titled 2015 Reimbursements by Quarter-All Entities, outlines (by quarter) the population (per 2010 census data), amount requested, amount eligible, number of procedures performed, amount reimbursed, and the percentage reimbursed for CY 2015. Counties/municipalities in the Tier 1 Group are highlighted in grey; counties/municipalities in the Tiers 2/3 Group are highlighted in light green. This chart also shows the amounts available for reimbursement, the amounts requested, and the amounts eligible as a total for each Tier Group. Additionally, the average reimbursement for each quarter, the total number of spay/neuter procedures for each quarter in 2015, and the total number of spay/neuter procedures for 2015 are indicated. Note: The amount requested and the amount eligible may be different due to the fact that the amount the county/municipality actually “requested” may not be what was eligible for reimbursement under that statute with the procedure caps in place.

### 2015 Changes to Spay/Neuter Statutes

In September of 2015, the General Assembly made the revisions the Spay/Neuter statutes in S.L. 2015-241. These changes included a change in the definition of a low-income person, changes in who a local government may contract with to provide low-cost spay/neuter services, and the addition and definition of “local veterinarian.”

# Spay/Neuter Program Legislative Report, Calendar Year-2015

## SPAY/NEUTER PROGRAM REVISIONS

SECTION 13.7.(a) G.S. 19A-63 reads as rewritten:

### **“§ 19A-63. Eligibility for distributions from Spay/Neuter Account. Account; Definitions.**

- (a) A county or city is eligible for reimbursement from the Spay/Neuter Account if it meets the following condition:
  - (1) The county or city offers one or more of the following programs to low-income persons on a year-round basis for the purpose of reducing the cost of spaying and neutering procedures for dogs and cats:
    - a. A spay/neuter clinic operated by the county or city.
    - b. A spay/neuter clinic operated by a ~~private non-profit~~ organization under contract or other arrangement with the county or ~~city~~ city, provided that the non-profit organization contracts with a local veterinarian to perform the spay/neuter procedures.
    - c. A contract or contracts with one or more veterinarians, whether or not located within the county, to provide reduced-cost spaying and neutering procedures.
    - d. Subvention of the spaying and neutering costs incurred by low-income pet owners through the use of vouchers or other procedure that provides a discount of the cost of spaying or neutering procedure fixed by a participating ~~veterinarian or other provider~~ veterinarian.
    - e. Subvention of the spaying and neutering costs incurred by persons who adopt a pet from an animal shelter operated by or under contract with the county or city.
  - (2) Reserved for future codification purposes.
- (b) ~~For the purposes of this Article, the term “low-income person” shall mean~~ The following definitions apply in this Article:
  - (1) Local Veterinarian. – A veterinarian licensed by the North Carolina Veterinary Medical Board under Article 11 of Chapter 90 of the General Statutes and practicing within the county where the services are provided. If no licensed veterinarian practices within that county, then a local veterinarian is a licensed veterinarian practicing in a county adjacent to the county where the services are provided. For the purposes of this definition, “practicing” means engaged in the practice of veterinary medicine, as define in Article 11 of Chapter 90 of the General Statutes.
  - (2) Low-income person. – an An individual who qualifies for one or more of the programs of public assistance administered by the Department of Health and Human Services pursuant to Chapter 108A of the General Statutes or whose annual household income is under three hundred percent (300%) lower than one hundred percent (100%) of the federal poverty level guidelines published by the United States Department of Health and Human Services.
- (c) Each county shall make rules or publish guidelines that designate what proof a low-income person must submit to establish that the person ~~qualifies for public assistance under subsection (b) of this section or~~ has annual household income lower than ~~three hundred percent (300%)~~ one hundred percent (100%) of the federal poverty level guidelines published by the United States Department of Health and Human Services.
- (d) Each county shall provide the opportunity to participate in the program created by this Article to all local veterinarians. Proof of the provision of this opportunity shall be included in the first reimbursement request of each calendar year.”

Prior to these changes, 42 counties/municipalities had requested reimbursement in at least one of the first three quarters of CY 2015. The total number of participating entities in the first, second, and third

## Spay/Neuter Program Legislative Report, Calendar Year-2015

quarters were 38, 39, and 38 respectively. The total numbers of procedures for the first, second, and third quarters were 3,014; 2,849, and 2,865 respectively. Since these changes there was a distinct reduction in the number of participating counties/municipalities, the number of procedures performed, and the amount of funds requested for reimbursement. 17 counties that had participated in one of the first three quarters of 2015, did not participate in the fourth quarter of 2015. Thus, only 26 counties/municipalities requested reimbursement in the fourth quarter of 2015. This is approximately a 31%-33% decrease in the number of participating entities when comparing the number of participating entities for one of the first three quarters and the fourth quarter. There was approximately a 38% decrease if comparing the total number of entities (42) that had participated in any of the first three quarters of 2015 to the number participating in the fourth quarter. The number of procedures for the fourth quarter of 2015 was 1,337. This was the lowest number of procedures for any given quarter from 2011 through 2015. It should be noted that only 23 counties/municipalities participated in the Spay/Neuter Program in 2011, when the number of procedures for any of the four quarters was comparable to the fourth quarter of 2015. Please refer to Figure 2, a graph titled 2015 Spay/Neuter Procedures, Tier 1 Group and Figure 3, a graph 2015 Spay/Neuter Procedures, Tiers 2/3 Group for a comparison of the number of procedures by quarter for each county/municipality in 2015. To compare the number of procedures in 2015 with previous years, please refer to Figure 4, a chart titled Quarterly Procedure Comparison 2011-2015.

The most common reason given by counties as to why they chose not to participate in the fourth quarter or had a reduction in the number of procedures was the change in the definition of a low-income individual.

Many counties reported that far fewer people qualified under the new definition of low-income. All entities that participated in at least one of the first three quarters of 2015 included programs of public assistance in their rules/guidelines. This meant that all the rules/guidelines for participating entities had to be re-written to remove this component and also to change from 300% of the federal poverty limit to 100% of the federal poverty limit. At least one county did not participate in the fourth quarter because they could not get their rule/guideline rewritten and approved before the deadline to submit their reimbursement request for the fourth quarter 2015. Several counties also mentioned that someone who had been unemployed for an extended period of time may not have income or proof of income. Prior to this change, these individuals usually had proof of qualifying for or currently participating in a program of public assistance. Thus they were covered under that aspect of the former definition of low-income. With this part removed, these people are not qualifying due to an inability to verify income.

### **Revenues**

Revenues accrued for the Spay/Neuter Program in Calendar Year ("CY") 2015 came from 3 sources: over-realized receipts from the NCDA&CS Food and Drug Division and a portion of the sale of Animal Lovers "I Care" license plates from NC Division of Motor Vehicles (NC DMV). The actual amounts are as follows:

NC DMV-Animal Lovers "I Care" Plates	\$162,340.00
NCDA&CS (Food & Drug and Feed Tax)	\$125,000.00
Appropriated Funds	\$125,000.00
<b>Total:</b>	<b>\$412,340.00</b>

## Spay/Neuter Program Legislative Report, Calendar Year-2015

### Revenues from NC DMV

#### G.S. 19A-62. **Spay/Neuter Account Established.**

(a) Creation-The Spay/Neuter Account is established as a non-reverting special revenue account in the Department of Agriculture and Consumer Services. The account consists of the following:

(2) Twenty dollars (\$20) of the additional fee imposed by G.S. 20-79.7 for an Animal Lovers special license plate.

A total of \$162,340.00 was accrued during CY 2015 from the sale of Animal Lovers' "I Care" license plates. This is an increase of \$3,180.00 from the year prior, CY 2014. A total of 8,117 plates were sold during CY 2015. This is an increase of 159 plates from the previous year, CY 2014, where 7,958 plates were sold. Refer to Figure 5, a chart titled Animal Lovers "I Care" License Plate Sales Comparison 2011-2015, for a comparison of license plate sales by quarter for years 2011 through 2015. The following transfers from DMV, for the period of this report (January 1, 2015 through December 31, 2015), regarding the Animal Lovers' "I Care" license plates are as follows:

Date	Amount Transferred	Plates Sold
1/13/2015	\$39,460.00	1,973
4/14/2015	\$36,900.00	1,845
7/10/2015	\$42,800.00	2,140
10/15/2015	\$43,180.00	2,159
<b>Total:</b>	<b>\$162,340.00</b>	<b>8,117</b>

### Revenues from NCDA&CS (Food & Drug and Feed Tax)

The Conference Report on the Continuation, Capital and Expansion Budgets, FY 2010 – 11, provided that the Animal Feed and Pet Food Branch in the Food and Drug Protection Division, NCDA&CS, would transfer \$250,000 annually to the Spay/Neuter Account. The Spay/Neuter Program has requested that the money be transferred in periodically rather than in a lump sum in order to present a steady revenue stream over the twelve month period. The following shows the dates and amounts of transfers from the Food and Drug Protection Division occurring in CY 2015:

1/12/2015	\$62,500.00
4/1/2015	\$62,500.00
<b>Total:</b>	<b>\$125,000.00</b>

### Revenues from Appropriated Funds (Beginning FY 2015-16)

The Joint Conference Committee Report on the Base, Expansion, and Capital Budgets on September 14, 2015 provided that \$250,000.00 of direct appropriation in recurring funding to support the Spay and Neuter Program will replace the \$250,000.00 transfer from the Food & Drug Division. The Spay/Neuter

## Spay/Neuter Program Legislative Report, Calendar Year-2015

Program has requested that the money be transferred in periodically rather than in a lump sum in order to present a steady revenue stream over the twelve month period. The following shows the dates and amounts of transfers from the appropriated funds:

8/1/2015	\$62,500.00
11/8/2015	\$62,500.00
<b>Total:</b>	<b>\$125,000.00</b>

### **Expenditures**

The expenditures for the Spay/Neuter Program in CY 2015 (January 1, 2015 through December 31, 2015) are as follows:

	1st Quarter	2nd Quarter	3rd Quarter	4th Quarter	Total
Aid To Counties	\$88,431.73	\$117,625.20	\$111,082.83	\$87,300.45	\$404,440.21
Education	\$0.00	\$0.00	\$0.00	\$759.33	\$759.33
Salaries	\$9,487.98	\$9,415.50	\$9,415.50	\$10,160.50	\$38,479.48
Insurance	\$1,346.07	\$1,345.68	\$1,349.86	\$1,345.68	\$5,387.29
Retirement	\$1,443.13	\$1,432.11	\$1,432.11	\$1,452.81	\$5,760.16
Social Security	\$721.06	\$715.52	\$715.53	\$772.89	\$2,925.00
Total:	\$101,429.97	\$130,534.01	\$123,995.83	\$101,791.66	\$457,751.47

### **Expenditures for Personnel**

The salaries, insurance, social security and retirement are for the Spay/Neuter Coordinator hired effective December 1, 2011. The figures shown in the table (above) cover the date range for CY 2015 (January 1, 2015 through December 31, 2015).

### **Expenditures for Reimbursements (Aid to Counties)**

The majority of the Spay/Neuter Program's expenditures are reimbursements to counties and municipalities for spaying or neutering dogs/cats owned by low income individuals as defined by North Carolina General Statute § 19A-63. Eligibility for distributions from Spay/Neuter Account (b).

Please refer to Figure 6, 2015 Spay/Neuter Reimbursements, Tier 1 Group and Figure 7, 2015 Spay/Neuter Reimbursements, Tiers 2/3 Group for a comparison of reimbursements by quarter in each county/municipality.

- Any county not showing on either of these graphs did not have any reimbursements in CY-2015 (January 1, 2015 through December 31, 2015).
- Any county present on the chart though not showing a bar for each quarter indicates no reimbursements were made for the quarter(s) not shown.
- These figures are for procedures administered for the period covered by this report, CY-2015 (January 1, 2015 through December 31, 2015). The actual payments for the fourth quarter (October 1, 2015 through December 31, 2015) were not made until February 2016.

## **Spay/Neuter Program Legislative Report, Calendar Year-2015**

- There were no quarters in 2015 where all counties/municipalities received 100% reimbursement. For the all quarters of 2015 reimbursement percentages were determined by the number of spay/neuter procedures per 1,000 individuals in the county/municipality (population from 2010 census data) compared to the total rate of spay/neuter procedures per 1,000 people within the total respective Tier Group. This is reflected in § 19A-64. Distributions to counties and cities from Spay/Neuter Account (c) Distribution, (2) and (3).
- A detailed listing by county of funds requested, amount reimbursed, and number of procedures for 2015, 2014, 2013, 2012, 2011, and 2010 is available on the NC Spay/Neuter website ([www.ncspayneuter.com](http://www.ncspayneuter.com)). This listing for 2015, titled 2015 Reimbursements by Quarter-All Entities is also at the end of this report.

### **Summary**

Out of 100 NC counties, a total of 43 counties/municipalities have received a combined \$404,440.21 in reimbursements via the NC Spay/Neuter Program during CY 2015.

To see the total reimbursements for each county/municipality for 2015 and the percentage of each of their total reimbursement is of the \$404,440.21 reimbursed to all entities, please refer to Figure 8, a graph titled 2015 Total Reimbursements-All Entities. To compare 2015 with past years, please refer to Figure 9, the chart titled Quarterly Reimbursement Comparison 2011-2015. While the program has still been able to reimburse more funds than 2011, it was not able to exceed 2012's or 2013's figures due to the drop in available funds for reimbursement as compared to those years. Figure 10, a chart titled Amounts Reimbursed Compared to Amounts Requested 2011-2015 compares the amount requested versus the amount reimbursed for 2011 through 2015, as well as a total comparison of all five of the indicated years. The following page lists the payments for each county/municipality for each quarter of 2015. The counties are listed alphabetically by Tier Group. The Tier 1 Group is listed first followed by the Tiers 2/3 Group (Brunswick is the first county of the Tiers 2/3 Group).



## Spay/Neuter Program Legislative Report, Calendar Year-2015

The payments for each quarter are as follows:

County/Municipality	1 <sup>st</sup> Qtr	2 <sup>nd</sup> Qtr	3 <sup>rd</sup> Qtr	4 <sup>th</sup> Qtr	Total
Tier 1 Group					
BLADEN	\$8,316.49	\$4,921.78	\$4,015.05	\$3,090.67	\$20,343.99
CASWELL	\$1,757.08	\$3,305.47	\$3,360.11	\$1,124.98	\$9,547.64
CHOWAN	\$1,344.31	\$3,348.21	\$1,660.18	\$0.00	\$6,352.70
MARTIN	\$1,884.65	\$5,919.07	\$5,706.53	\$5,852.93	\$19,363.18
RICHMOND	\$4,079.30	\$7,508.35	\$6,107.11	\$4,780.00	\$22,474.76
ROBESON	\$4,944.61	\$9,636.55	\$8,047.09	\$20,474.33	\$43,102.58
ROCKINGHAM	\$5,862.15	\$7,693.19	\$7,479.09	\$0.00	\$21,034.43
SCOTLAND	\$6,879.77	\$6,080.71	\$7,534.22	\$5,744.43	\$26,239.13
SWAIN	\$5,434.06	\$6,478.05	\$6,155.13	\$5,087.73	\$23,154.97
TARBORO, TOWN OF	\$499.44	\$648.61	\$632.49	\$185.84	\$1,966.38
VANCE	\$3,062.07	\$3,026.00	\$4,481.00	\$2,279.00	\$12,848.07
WILSON	\$151.93	\$246.62	\$363.42	\$1,131.49	\$1,893.46
Tiers 2/3 Group					
BRUNSWICK	\$1,908.21	\$1,895.26	\$0.00	\$0.00	\$3,803.47
BUNCOMBE	\$1,348.55	\$189.95	\$517.39	\$0.00	\$2,055.89
BURKE	\$3,765.89	\$3,106.80	\$2,283.77	\$3,193.00	\$12,349.46
BURLINGTON, CITY OF	\$0.00	\$0.00	\$0.00	\$1,166.49	\$1,166.49
CABARRUS	\$0.00	\$182.65	\$147.76	\$1,015.00	\$1,345.41
CALDWELL	\$2,233.93	\$4,122.15	\$5,140.51	\$2,330.00	\$13,826.59
CARTERET	\$0.00	\$0.00	\$1,329.59	\$0.00	\$1,329.59
CARY, TOWN OF	\$128.48	\$20.14	\$104.68	\$845.53	\$1,098.83
CHATHAM	\$1,220.07	\$2,220.64	\$1,391.20	\$3,910.00	\$8,741.91
CRAVEN	\$188.05	\$80.90	\$0.00	\$0.00	\$268.95
CUMBERLAND	\$756.83	\$975.07	\$763.11	\$0.00	\$2,495.01
DARE	\$0.00	\$0.00	\$3,259.00	\$2,535.00	\$5,794.00
DAVIDSON	\$701.75	\$1,001.45	\$818.92	\$3,923.00	\$6,445.12
DAVIE	\$2,206.28	\$1,787.00	\$2,071.00	\$1,686.00	\$7,750.28
DURHAM	\$477.07	\$730.95	\$350.63	\$0.00	\$1,558.65
GRANVILLE	\$614.60	\$1,495.93	\$1,908.58	\$0.00	\$4,019.11
GUILFORD	\$481.70	\$696.91	\$523.17	\$0.00	\$1,701.78
HARNETT	\$894.43	\$1,157.72	\$1,268.22	\$0.00	\$3,320.37
HAYWOOD	\$8,320.75	\$11,859.83	\$11,715.06	\$4,970.00	\$36,865.64
HENDERSON	\$1,105.42	\$1,577.19	\$1,496.11	\$0.00	\$4,178.72
IREDELL	\$1,880.63	\$0.00	\$1,613.07	\$0.00	\$3,493.70
MADISON	\$1,135.00	\$2,245.00	\$1,930.00	\$0.00	\$5,310.00
MCDOWELL	\$5,995.26	\$8,655.06	\$8,005.54	\$7,441.96	\$30,097.82
MOORE	\$1,862.32	\$3,290.16	\$0.00	\$245.00	\$5,397.48
ORANGE	\$1,385.32	\$1,523.02	\$2,173.30	\$0.00	\$5,081.64

## Spay/Neuter Program Legislative Report, Calendar Year-2015

County/Municipality	1 <sup>st</sup> Qtr	2 <sup>nd</sup> Qtr	3 <sup>rd</sup> Qtr	4 <sup>th</sup> Qtr	Total
Tiers 2/3 Group (continued)					
PERSON	\$2,009.11	\$3,783.93	\$3,201.35	\$2,208.07	\$11,202.46
RANDOLPH	\$1,009.15	\$1,529.97	\$892.57	\$332.00	\$3,763.69
STOKES	\$775.21	\$1,914.50	\$652.64	\$893.00	\$4,235.35
WATAUGA	\$0.00	\$420.00	\$0.00	\$0.00	\$420.00
WILKES	\$252.25	\$900.41	\$1,274.24	\$0.00	\$2,426.90
YADKIN	\$1,559.61	\$1,450.00	\$710.00	\$855.00	\$4,574.61
TOTAL (BOTH TIER GROUPS)	\$88,431.73	\$117,625.20	\$111,082.83	\$87,300.45	\$404,440.21

Figure 1. 2015 Reimbursements By Quarter-All Entities

COUNTY/MUNICIPALITY	AMT REQUESTED	AMT ELIGIBLE	# OF PROCEDURES	AMT REIMBURSED	% REIMBURSED
<b>Total Available in S/N Fund for Reimbursement 1st Qtr-2015:</b>		\$88,431.73		Total Eligible for Reimbursement 1st Quarter-2015:	\$179,281.78
Amt Available for Reimbursement Tier 1 Group 1st Qtr-2015:		\$44,215.86		Amt Eligible for Reimbursement Tier 1 Group 1st Qtr-2015:	\$69,130.05
Amt Available for Reimbursement Tiers 2/3 Group 1st Qtr-2015:		\$44,215.87		Amt Eligible for Reimbursement Tiers 2/3 Group 1st Qtr-2015:	\$110,151.73
<b>Total Available in S/N Fund for Reimbursement 2nd Qtr-2015:</b>		\$117,625.21		Total Eligible for Reimbursement 2nd Qtr-2015:	\$179,323.58
Amt Available for Reimbursement Tier 1 Group 2nd Qtr-2015:		\$58,812.61		Amt Eligible for Reimbursement Tier 1 Group 2nd Qtr-2015:	\$77,982.14
Amt Available for Reimbursement Tiers 2/3 Group 2nd Qtr-2015:		\$58,812.61		Amt Eligible for Reimbursement Tiers 2/3 Group 2nd Qtr-2015:	\$101,341.44
<b>Total Available in S/N Fund for Reimbursement 3rd Qtr-2015:</b>		\$111,082.83		Total Eligible for Reimbursement 3rd Qtr-2015:	\$173,833.42
Amt Available for Reimbursement Tier 1 Group 3rd Qtr-2015:		\$55,541.42		Amt Eligible for Reimbursement Tier 1 Group 3rd Qtr-2015:	\$73,699.04
Amt Available for Reimbursement Tiers 2/3 Group 3rd Qtr-2015:		\$55,541.42		Amt Eligible for Reimbursement Tiers 2/3 Group 3rd Qtr-2015:	\$100,134.38
<b>Total Available in S/N Fund for Reimbursement 4th Qtr-2015:</b>		\$87,300.45		Total Eligible for Reimbursement 4th Qtr-2015:	\$89,962.61
Amt Available for Reimbursement Tier 1 Group 4th Qtr-2015:		\$43,650.23		Amt Eligible for Reimbursement Tier 1 Group 4th Qtr-2015:	\$52,413.56
Amt Available for Reimbursement Tiers 2/3 Group 4th Qtr-2015:		\$43,650.23		Amt Eligible for Reimbursement Tiers 2/3 Group 4th Qtr-2015:	\$37,549.05
COUNTY/MUNICIPALITY	AMT REQUESTED	AMT ELIGIBLE	# OF PROCEDURES	AMT REIMBURSED	% REIMBURSED
<b>Bladen, Tier 1 (pop: 35,190)</b>					
1st Quarter	\$9,610.29	\$9,059.71	120	\$8,316.49	91.8%
2nd Quarter	\$5,116.49	\$4,921.78	63	\$4,921.78	100%
3rd Quarter	\$4,034.69	\$4,015.05	50	\$4,015.05	100%
4th Quarter	\$3,162.77	\$3,090.67	39	\$3,090.67	100%
Total:	\$21,924.24	\$21,087.21	272	\$20,343.99	
<b>Brunswick, Tier 3 (pop: 107,431)</b>					
1st Quarter	\$7,870.00	\$7,870.00	106	\$1,908.21	24.2%
2nd Quarter	\$6,080.00	\$6,080.00	75	\$1,895.26	31.2%
3rd Quarter	\$0.00	\$0.00	n/a	\$0.00	n/a
4th Quarter	\$0.00	\$0.00	n/a	\$0.00	n/a
Total:	\$13,950.00	\$13,950.00	181	\$3,803.47	
<b>Buncombe, Tier 3 (pop: 238,318)</b>					
1st Quarter	\$7,880.00	\$7,880.00	166	\$1,348.55	17.1%
2nd Quarter	\$850.00	\$850.00	17	\$189.95	22.3%
3rd Quarter	\$2,525.00	\$2,525.00	52	\$517.39	20.5%
4th Quarter	\$0.00	\$0.00	n/a	\$0.00	n/a
Total:	\$11,255.00	\$11,255.00	235	\$2,055.89	
<b>Burke, Tier 2 (pop: 90,912)</b>					
1st Quarter	\$7,631.00	\$7,631.00	177	\$3,765.89	49.3%
2nd Quarter	\$4,090.00	\$4,090.00	104	\$3,106.80	76%
3rd Quarter	\$3,561.00	\$3,561.00	87	\$2,283.77	64.1%
4th Quarter	\$3,193.00	\$3,193.00	87	\$3,193.00	100%
Total:	\$18,475.00	\$18,475.00	455	\$12,349.46	
<b>Burlington, City of, Tier 2 (pop: 49,963)</b>					
1st Quarter	\$0.00	\$0.00	n/a	\$0.00	n/a
2nd Quarter	\$0.00	\$0.00	n/a	\$0.00	n/a
3rd Quarter	\$0.00	\$0.00	n/a	\$0.00	n/a
4th Quarter	\$1,166.49	\$1,166.49	17	\$1,166.49	100%
Total:	\$1,166.49	\$1,166.49	17	\$1,166.49	
<b>Cabarrus, Tier 3 (pop: 178,011)</b>					
1st Quarter	\$0.00	\$0.00	n/a	\$0.00	n/a
2nd Quarter	\$590.00	\$590.00	12	\$182.65	31%
3rd Quarter	\$540.00	\$540.00	11	\$147.76	27.4%
4th Quarter	\$1,015.00	\$1,015.00	22	\$1,015.00	100%
Total:	\$2,145.00	\$2,145.00	45	\$1,345.41	
<b>Caldwell, Tier 2 (pop: 83,029)</b>					
1st Quarter	\$4,545.00	\$4,545.00	96	\$2,233.93	49.2%
2nd Quarter	\$6,060.00	\$6,060.00	126	\$4,122.15	68%
3rd Quarter	\$8,455.00	\$8,455.00	179	\$5,140.51	61%
4th Quarter	\$2,330.00	\$2,330.00	49	\$2,330.00	100%
Total:	\$21,390.00	\$21,390.00	450	\$13,826.59	

-Population from 2010 Census Data

-Tier 1 Group in gray; Tiers 2/3 Group in light green

-Amts eligible and requested may differ due to procedure caps

Figure 1. 2015 Reimbursements By Quarter-All Entities

COUNTY/MUNICIPALITY	AMT REQUESTED	AMT ELIGIBLE	# OF PROCEDURES	AMT REIMBURSED	% REIMBURSED
<b>Carteret, Tier 3 (pop: 66,469)</b>					
(did not apply) 1st Quarter	\$0.00	\$0.00	n/a	\$0.00	n/a
(did not apply) 2nd Quarter	\$0.00	\$0.00	n/a	\$0.00	n/a
(did not apply) 3rd Quarter	\$2,775.00	\$2,569.62	37	\$1,329.59	51.7%
(did not apply) 4th Quarter	\$0.00	\$0.00	n/a	\$0.00	n/a
Total:	\$2,775.00	\$2,569.62	37	\$1,329.59	
<b>Cary, Town of, Tier 3 (pop: 135,260)</b>					
1st Quarter	\$735.45	\$735.45	9	\$128.48	17.5%
2nd Quarter	\$106.49	\$85.22	1	\$20.14	23.6%
3rd Quarter	\$403.59	\$403.59	6	\$104.68	25.9%
4th Quarter	\$845.53	\$845.53	11	\$845.53	100%
Total:	\$2,091.06	\$2,069.79	27	\$1,098.83	
<b>Caswell, Tier 1 (pop: 23,719)</b>					
1st Quarter	\$1,757.08	\$1,757.08	25	\$1,757.08	100%
2nd Quarter	\$3,305.47	\$3,305.47	48	\$3,305.47	100%
3rd Quarter	\$3,360.11	\$3,360.11	55	\$3,360.11	100%
4th Quarter	\$1,124.98	\$1,124.98	17	\$1,124.98	100%
Total:	\$9,547.64	\$9,547.64	145	\$9,547.64	
<b>Chatham, Tier 3 (pop: 63,505)</b>					
1st Quarter	\$3,240.00	\$3,240.00	40	\$1,220.07	37.7%
2nd Quarter	\$4,245.00	\$4,245.00	52	\$2,220.64	52.3%
3rd Quarter	\$2,865.00	\$2,865.00	37	\$1,391.20	48.6%
4th Quarter	\$3,910.00	\$3,910.00	50	\$3,910.00	100%
Total:	\$14,260.00	\$14,260.00	179	\$8,741.91	
<b>Chowan, Tier 1 (pop: 14,793)</b>					
1st Quarter	\$1,480.00	\$1,344.31	21	\$1,344.31	100%
2nd Quarter	\$3,710.00	\$3,348.21	45	\$3,348.21	100%
3rd Quarter	\$1,800.00	\$1,660.18	28	\$1,660.18	100%
(did not apply) 4th Quarter	\$0.00	\$0.00	n/a	\$0.00	n/a
Total:	\$6,990.00	\$6,352.70	94	\$6,352.70	
<b>Craven, Tier 2 (pop: 103,505)</b>					
1st Quarter	\$1,145.00	\$1,004.75	10	\$188.05	18.7%
2nd Quarter	\$360.00	\$313.60	3	\$80.90	25.8%
(did not apply) 3rd Quarter	\$0.00	\$0.00	n/a	\$0.00	n/a
(did not apply) 4th Quarter	\$0.00	\$0.00	n/a	\$0.00	n/a
Total:	\$1,505.00	\$1,318.35	13	\$268.95	
<b>Cumberland, Tier 2 (pop: 319,431)</b>					
1st Quarter	\$7,794.54	\$7,789.63	125	\$756.83	9.7%
2nd Quarter	\$7,494.20	\$7,370.18	115	\$975.07	13.2%
3rd Quarter	\$6,356.48	\$6,342.32	102	\$763.11	12%
(did not apply) 4th Quarter	\$0.00	\$0.00	n/a	\$0.00	n/a
Total:	\$21,645.22	\$21,502.13	342	\$2,495.01	
<b>Dare, Tier 2 (pop: 33,920)</b>					
(did not apply) 1st Quarter	\$0.00	\$0.00	n/a	\$0.00	n/a
(did not apply) 2nd Quarter	\$0.00	\$0.00	n/a	\$0.00	n/a
3rd Quarter	\$3,259.00	\$3,259.00	55	\$3,259.00	100%
4th Quarter	\$2,535.00	\$2,535.00	49	\$2,535.00	100%
Total:	\$5,794.00	\$5,794.00	104	\$5,794.00	
<b>Davidson, Tier 2 (pop: 162,878)</b>					
1st Quarter	\$3,386.00	\$3,386.00	59	\$701.75	20.7%
2nd Quarter	\$3,256.00	\$3,256.00	60	\$1,001.45	30.8%
3rd Quarter	\$3,201.50	\$3,201.50	56	\$818.92	25.6%
4th Quarter	\$3,923.00	\$3,923.00	72	\$3,923.00	100%
Total:	\$13,766.50	\$13,766.50	247	\$6,445.12	

-Population from 2010 Census Data  
-Tier 1 Group in gray; Tiers 2/3 Group in light green  
-Amts eligible and requested may differ due to procedure caps

Figure 1. 2015 Reimbursements By Quarter-All Entities

COUNTY/MUNICIPALITY	AMT REQUESTED	AMT ELIGIBLE	# OF PROCEDURES	AMT REIMBURSED	% REIMBURSED
<b>Davie, Tier 2 (pop 41,240)</b>					
1st Quarter	\$2,349.00	\$2,349.00	47	\$2,206.28	93.9%
2nd Quarter	\$1,787.00	\$1,787.00	36	\$1,787.00	100%
3rd Quarter	\$2,071.00	\$2,071.00	38	\$2,071.00	100%
4th Quarter	\$1,686.00	\$1,686.00	33	\$1,686.00	100%
Total:	\$7,893.00	\$7,893.00	154	\$7,750.28	
<b>Durham, Tier 3 (pop: 267,587)</b>					
1st Quarter	\$4,655.41	\$4,655.41	66	\$4,777.07	10.2%
2nd Quarter	\$5,696.75	\$5,685.34	72	\$730.95	12.9%
3rd Quarter	\$3,012.94	\$3,012.94	39	\$350.63	11.6%
4th Quarter	\$0.00	\$0.00	n/a	\$0.00	n/a
Total:	\$13,365.10	\$13,353.69	177	\$1,558.65	
<b>Granville, Tier 2 (pop: 59,916)</b>					
1st Quarter	\$1,555.00	\$1,555.00	19	\$614.60	39.5%
2nd Quarter	\$2,730.00	\$2,730.00	33	\$1,495.93	54.8%
3rd Quarter	\$3,805.00	\$3,794.47	48	\$1,908.58	50.3%
4th Quarter	\$0.00	\$0.00	n/a	\$0.00	n/a
Total:	\$8,090.00	\$8,079.47	100	\$4,019.11	
<b>Guilford, Tier 3 (pop: 488,406)</b>					
1st Quarter	\$5,014.00	\$5,011.62	122	\$481.70	9.6%
2nd Quarter	\$5,273.00	\$5,273.00	125	\$696.91	13.2%
3rd Quarter	\$4,459.00	\$4,456.59	107	\$523.17	11.7%
4th Quarter	\$0.00	\$0.00	n/a	\$0.00	n/a
Total:	\$14,746.00	\$14,741.21	354	\$1,701.78	
<b>Harnett, Tier 2 (pop: 114,678)</b>					
1st Quarter	\$1,956.00	\$1,956.00	53	\$894.43	45.7%
2nd Quarter	\$1,863.11	\$1,863.11	49	\$1,157.72	62.1%
3rd Quarter	\$2,824.84	\$2,824.84	61	\$1,268.22	44.9%
4th Quarter	\$0.00	\$0.00	n/a	\$0.00	n/a
Total:	\$6,643.95	\$6,643.95	163	\$3,320.37	
<b>Haywood, Tier 3 (pop: 59,036)</b>					
1st Quarter	\$12,100.00	\$12,100.00	254	\$8,320.75	68.8%
2nd Quarter	\$12,465.00	\$12,465.00	258	\$11,859.83	95.1%
3rd Quarter	\$13,815.00	\$13,815.00	290	\$11,715.06	84.8%
4th Quarter	\$4,970.00	\$4,970.00	106	\$4,970.00	100.0%
Total:	\$43,350.00	\$43,350.00	908	\$36,865.64	
<b>Henderson, Tier 3 (pop: 106,740)</b>					
1st Quarter	\$2,990.00	\$2,990.00	61	\$1,105.42	37%
2nd Quarter	\$2,995.00	\$2,995.00	62	\$1,577.19	52.7%
3rd Quarter	\$3,095.00	\$3,095.00	67	\$1,496.11	48.3%
4th Quarter	\$0.00	\$0.00	n/a	\$0.00	n/a
Total:	\$9,080.00	\$9,080.00	190	\$4,178.72	
<b>Iredell, Tier 3 (pop: 159,437)</b>					
1st Quarter	\$4,275.00	\$4,275.00	155	\$1,880.63	44%
2nd Quarter	\$0.00	\$0.00	n/a	\$0.00	n/a
3rd Quarter	\$2,980.00	\$2,980.00	108	\$1,613.07	54.1%
4th Quarter	\$0.00	\$0.00	n/a	\$0.00	n/a
Total:	\$7,255.00	\$7,255.00	263	\$3,493.70	
<b>Madison, Tier 2 (pop: 20,764)</b>					
1st Quarter	\$1,135.00	\$1,135.00	30	\$1,135.00	100%
2nd Quarter	\$2,245.00	\$2,245.00	63	\$2,245.00	100%
3rd Quarter	\$1,930.00	\$1,930.00	57	\$1,930.00	100%
4th Quarter	\$0.00	\$0.00	n/a	\$0.00	n/a
Total:	\$5,310.00	\$5,310.00	150	\$5,310.00	

-Population from 2010 Census Data  
-Tier 1 Group in gray; Tiers 2/3 Group in light green  
-Amts eligible and requested may differ due to procedure caps

Figure 1. 2015 Reimbursements By Quarter-All Entities

COUNTY/MUNICIPALITY	AMT REQUESTED	AMT ELIGIBLE	# OF PROCEDURES	AMT REIMBURSED	% REIMBURSED
<b>Martin, Tier 1 (pop: 24,505)</b>					
1st Quarter	\$1,925.00	\$1,884.65	21	\$1,884.65	100%
2nd Quarter	\$5,919.07	\$5,919.07	72	\$5,919.07	100%
3rd Quarter	\$5,706.53	\$5,706.53	66	\$5,706.53	100%
4th Quarter	\$5,852.93	\$5,852.93	71	\$5,852.93	100%
Total:	\$19,403.53	\$19,363.18	230	\$19,363.18	
<b>McDowell, Tier 2 (pop: 44,996)</b>					
1st Quarter	\$8,403.57	\$7,295.25	76	\$5,995.26	82.2%
2nd Quarter	\$10,004.52	\$8,655.06	89	\$8,655.06	100%
3rd Quarter	\$9,205.22	\$8,005.54	88	\$8,005.54	100%
4th Quarter	\$8,533.49	\$7,441.96	81	\$7,441.96	100%
Total:	\$36,146.80	\$31,397.81	334	\$30,097.82	
<b>Moore, Tier 3 (pop: 88,247)</b>					
1st Quarter	\$4,765.00	\$4,735.62	85	\$1,862.32	39.3%
2nd Quarter	\$5,720.00	\$5,675.08	107	\$3,290.16	58%
3rd Quarter	\$0.00	\$0.00	n/a	\$0.00	n/a
4th Quarter	\$245.00	\$245.00	4	\$245.00	100%
Total:	\$10,730.00	\$10,655.70	196	\$5,397.48	
<b>Orange, Tier 3 (pop: 133,801)</b>					
1st Quarter	\$8,114.88	\$7,956.37	96	\$1,385.32	17.4%
2nd Quarter	\$6,171.89	\$6,121.55	75	\$1,523.02	24.9%
3rd Quarter	\$10,934.53	\$10,499.73	122	\$2,173.30	20.7%
4th Quarter	\$0.00	\$0.00	n/a	\$0.00	n/a
Total:	\$25,221.30	\$24,577.65	293	\$5,081.64	
<b>Person, Tier 2 (pop: 39,464)</b>					
1st Quarter	\$3,247.39	\$3,112.01	41	\$2,009.11	64.6%
2nd Quarter	\$4,080.21	\$4,080.21	55	\$3,783.93	92.7%
3rd Quarter	\$3,510.75	\$3,510.75	53	\$3,201.35	91.2%
4th Quarter	\$2,208.07	\$2,208.07	29	\$2,208.07	100%
Total:	\$13,046.42	\$12,911.04	178	\$11,202.46	
<b>Randolph, Tier 2 (pop: 147,752)</b>					
1st Quarter	\$3,724.00	\$3,724.00	74	\$1,009.15	27.1%
2nd Quarter	\$4,009.00	\$4,002.59	80	\$1,529.97	38.2%
3rd Quarter	\$2,435.00	\$2,435.00	53	\$892.57	36.7%
4th Quarter	\$332.00	\$332.00	7	\$332.00	100%
Total:	\$10,500.00	\$10,493.59	214	\$3,763.69	
<b>Richmond, Tier 1 (pop: 46,639)</b>					
1st Quarter	\$4,830.00	\$4,762.73	78	\$4,079.30	85.7%
2nd Quarter	\$7,590.00	\$7,508.35	128	\$7,508.35	100%
3rd Quarter	\$6,160.00	\$6,107.11	105	\$6,107.11	100%
4th Quarter	\$4,780.00	\$4,780.00	86	\$4,780.00	100%
Total:	\$23,360.00	\$23,158.19	397	\$22,474.76	
<b>Robeson, Tier 1 (pop: 134,168)</b>					
1st Quarter	\$21,955.00	\$21,943.59	272	\$4,944.61	22.5%
2nd Quarter	\$27,100.00	\$27,062.40	325	\$9,636.55	35.6%
3rd Quarter	\$24,115.00	\$24,100.22	290	\$8,047.09	33.4%
4th Quarter	\$23,150.00	\$23,136.49	287	\$20,474.33	88.5%
Total:	\$96,320.00	\$96,242.70	1,174	\$43,102.58	
<b>Rockingham, Tier 1 (pop: 93,643)</b>					
1st Quarter	\$11,180.00	\$11,180.00	225	\$5,862.15	52.4%
2nd Quarter	\$9,197.00	\$9,197.00	181	\$7,693.19	83.6%
3rd Quarter	\$9,251.00	\$9,251.00	188	\$7,479.09	80.8%
4th Quarter	\$0.00	\$0.00	n/a	\$0.00	n/a
Total:	\$29,628.00	\$29,628.00	594	\$21,034.43	

-Population from 2010 Census Data  
-Tier 1 Group in gray; Tiers 2/3 Group in light green  
-Amts eligible and requested may differ due to procedure caps

Figure 1. 2015 Reimbursements By Quarter-All Entities

COUNTY/MUNICIPALITY	AMT REQUESTED	AMT ELIGIBLE	# OF PROCEDURES	AMT REIMBURSED	% REIMBURSED
<b>Scotland, Tier 1 (pop: 36,157)</b>					
1st Quarter	\$7,873.86	\$7,727.48	102	\$6,879.77	89%
2nd Quarter	\$6,106.68	\$6,080.71	81	\$6,080.71	100%
3rd Quarter	\$7,534.22	\$7,534.22	100	\$7,534.22	100%
4th Quarter	\$5,744.43	\$5,744.43	74	\$5,744.43	100%
Total:	\$27,259.19	\$27,086.84	357	\$26,239.13	
<b>Stokes, Tier 2 (pop: 47,401)</b>					
1st Quarter	\$970.00	\$955.62	19	\$775.21	81.1%
2nd Quarter	\$1,914.50	\$1,914.50	38	\$1,914.50	100%
3rd Quarter	\$675.00	\$675.00	13	\$652.64	96.7%
4th Quarter	\$893.00	\$893.00	14	\$893.00	100%
Total:	\$4,452.50	\$4,438.12	84	\$4,235.35	
<b>Swain, Tier 1 (pop: 13,981)</b>					
1st Quarter	\$5,974.63	\$5,434.06	57	\$5,434.06	100%
2nd Quarter	\$6,838.11	\$6,478.05	67	\$6,478.05	100%
3rd Quarter	\$6,155.13	\$6,155.13	68	\$6,155.13	100%
4th Quarter	\$5,087.73	\$5,087.73	56	\$5,087.73	100%
Total:	\$24,055.60	\$23,154.97	248	\$23,154.97	
<b>Tarboro, Town of, Tier 1 (pop: 11,315)</b>					
1st Quarter	\$771.25	\$499.44	5	\$499.44	100%
2nd Quarter	\$1,012.00	\$648.61	7	\$648.61	100%
3rd Quarter	\$1,002.50	\$632.49	7	\$632.49	100%
4th Quarter	\$258.00	\$185.84	2	\$185.84	100%
Total:	\$3,043.75	\$1,966.38	21	\$1,966.38	
<b>Vance, Tier 1 (pop: 45,422)</b>					
1st Quarter	\$3,077.00	\$3,077.00	57	\$3,062.07	99.5%
2nd Quarter	\$3,026.00	\$3,026.00	55	\$3,026.00	100%
3rd Quarter	\$4,481.00	\$4,481.00	84	\$4,481.00	100%
4th Quarter	\$2,279.00	\$2,279.00	43	\$2,279.00	100%
Total:	\$12,863.00	\$12,863.00	239	\$12,848.07	
<b>Watauga, Tier 3 (pop: 51,079) (did not apply)</b>					
1st Quarter	\$0.00	\$0.00	n/a	\$0.00	n/a
2nd Quarter	\$420.00	\$420.00	14	\$420.00	100%
3rd Quarter	\$0.00	\$0.00	n/a	\$0.00	n/a
4th Quarter	\$0.00	\$0.00	n/a	\$0.00	n/a
Total:	\$420.00	\$420.00	14	\$420.00	
<b>Wilkes, Tier 2 (pop: 69,340)</b>					
1st Quarter	\$429.00	\$429.00	9	\$252.25	58.8%
2nd Quarter	\$1,039.00	\$1,039.00	23	\$900.41	86.7%
3rd Quarter	\$2,620.00	\$2,596.49	37	\$1,274.24	49.1%
4th Quarter	\$0.00	\$0.00	n/a	\$0.00	n/a
Total:	\$4,088.00	\$4,064.49	69	\$2,426.90	
<b>Wilson, Tier 1 (pop: 81,234)</b>					
1st Quarter	\$460.00	\$460.00	5	\$151.93	33%
2nd Quarter	\$500.00	\$486.49	5	\$246.62	50.7%
3rd Quarter	\$696.00	\$696.00	8	\$363.42	52.2%
4th Quarter	\$1,145.00	\$1,131.49	12	\$1,131.49	100%
Total:	\$2,801.00	\$2,773.98	30	\$1,893.46	
<b>Yadkin, Tier 2 (pop: 38,406)</b>					
1st Quarter	\$1,835.00	\$1,835.00	31	\$1,559.61	85%
2nd Quarter	\$1,450.00	\$1,450.00	28	\$1,450.00	100%
3rd Quarter	\$710.00	\$710.00	13	\$710.00	100%
4th Quarter	\$855.00	\$855.00	19	\$855.00	100%
Total:	\$4,850.00	\$4,850.00	91	\$4,574.61	

-Population from 2010 Census Data  
-Tier 1 Group in gray; Tiers 2/3 Group in light green  
-Amts eligible and requested may differ due to procedure caps

Figure 1. 2015 Reimbursements By Quarter-All Entities

COUNTY/MUNICIPALITY	AMT REQUESTED	AMT ELIGIBLE	# OF PROCEDURES	AMT REIMBURSED	% REIMBURSED
	Total Reimbursed 1st Qtr-2015:	\$88,431.73		Total Reimbursed 2nd Qtr-2015:	\$117,625.20
	Total Number of Procedures 1st Qtr-2015:	3,014		Total Number of Procedures 2nd Qtr-2015:	2,849
	Average Reimbursement 1st Qtr-2015:	\$2,327.15		Average Reimbursement 2nd Qtr-2015:	\$3,016.03
	Average Reimbursement Tier 1 Group 1st Qtr-2015:	\$3,684.66		Average Reimbursement Tier 1 Group 2nd Qtr-2015:	\$4,901.05
	Average Reimbursement Tiers 2/3 Group 1st Qtr-2015:	\$1,700.61		Average Reimbursement Tiers 2/3 Group 2nd Qtr-2015:	\$2,235.22
	Total Reimbursed 3rd Qtr-2015:	\$111,082.83		Total Reimbursed 4th Qtr-2015:	\$87,300.45
	Total Number of Procedures 3rd Qtr-2015:	2,865		Total Number of Procedures 4th Qtr-2015:	1,337
	Average Reimbursement 3rd Qtr-2015:	\$2,923.23		Average Reimbursement 4th Qtr-2015:	\$3,357.71
	Average Reimbursement Tier 1 Group 3rd Qtr-2015:	\$4,628.45		Average Reimbursement Tier 1 Group 4th Qtr-2015:	\$4,975.14
	Average Reimbursement Tiers 2/3 Group 3rd Qtr-2015:	\$2,136.21		Average Reimbursement Tiers 2/3 Group 4th Qtr-2015:	\$2,346.82
	Total Amt Requested 2015:	\$632,602.29			
	Total Amt Eligible 2015:	\$622,401.39			
	Total Amt Reimbursed 2015:	\$404,440.21			
	Total Number of Procedures 2015:	10,065			
	Average Reimbursement 2015:	\$2,868.37			

-Population from 2010 Census Data

-Tier 1 Group in gray; Tiers 2/3 Group in light green

-Amts eligible and requested may differ due to procedure caps



Figure 2. 2015 Spay/Neuter Procedures, Tier 1 Group

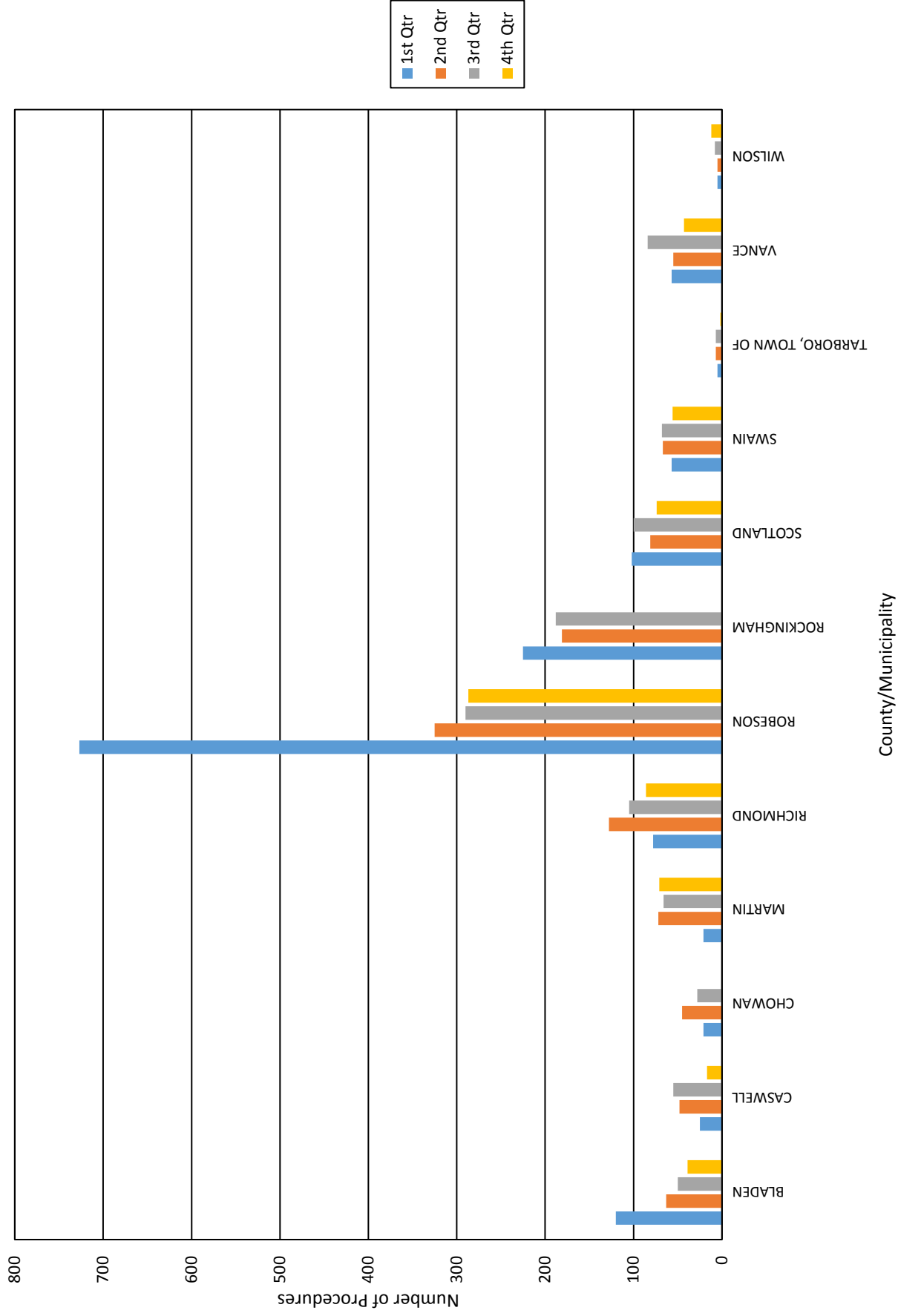


Figure 3. 2015 Spay/Neuter Procedures, Tiers 2/3 Group

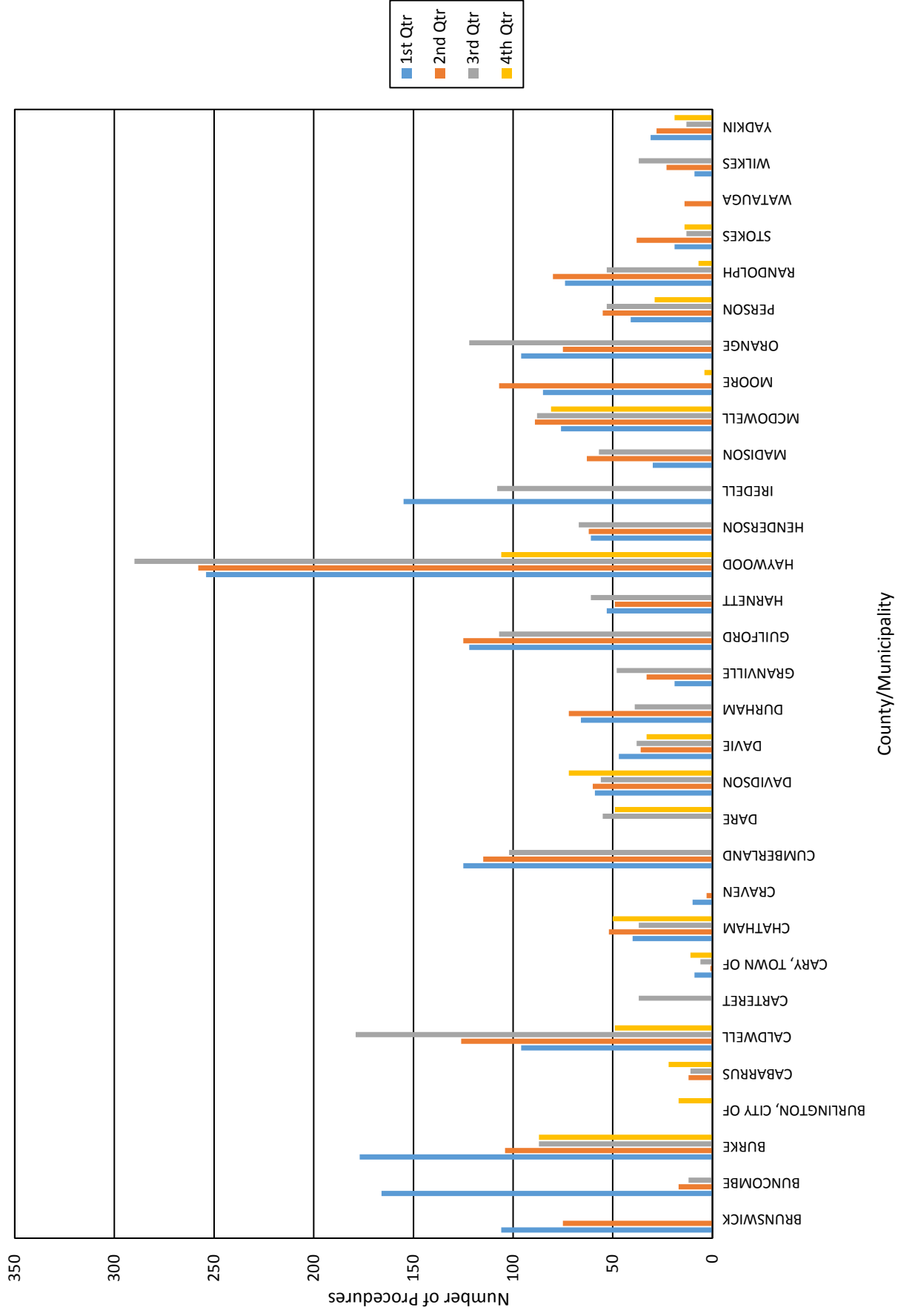


Figure 4. Quarterly Procedure Comparison 2011-2015

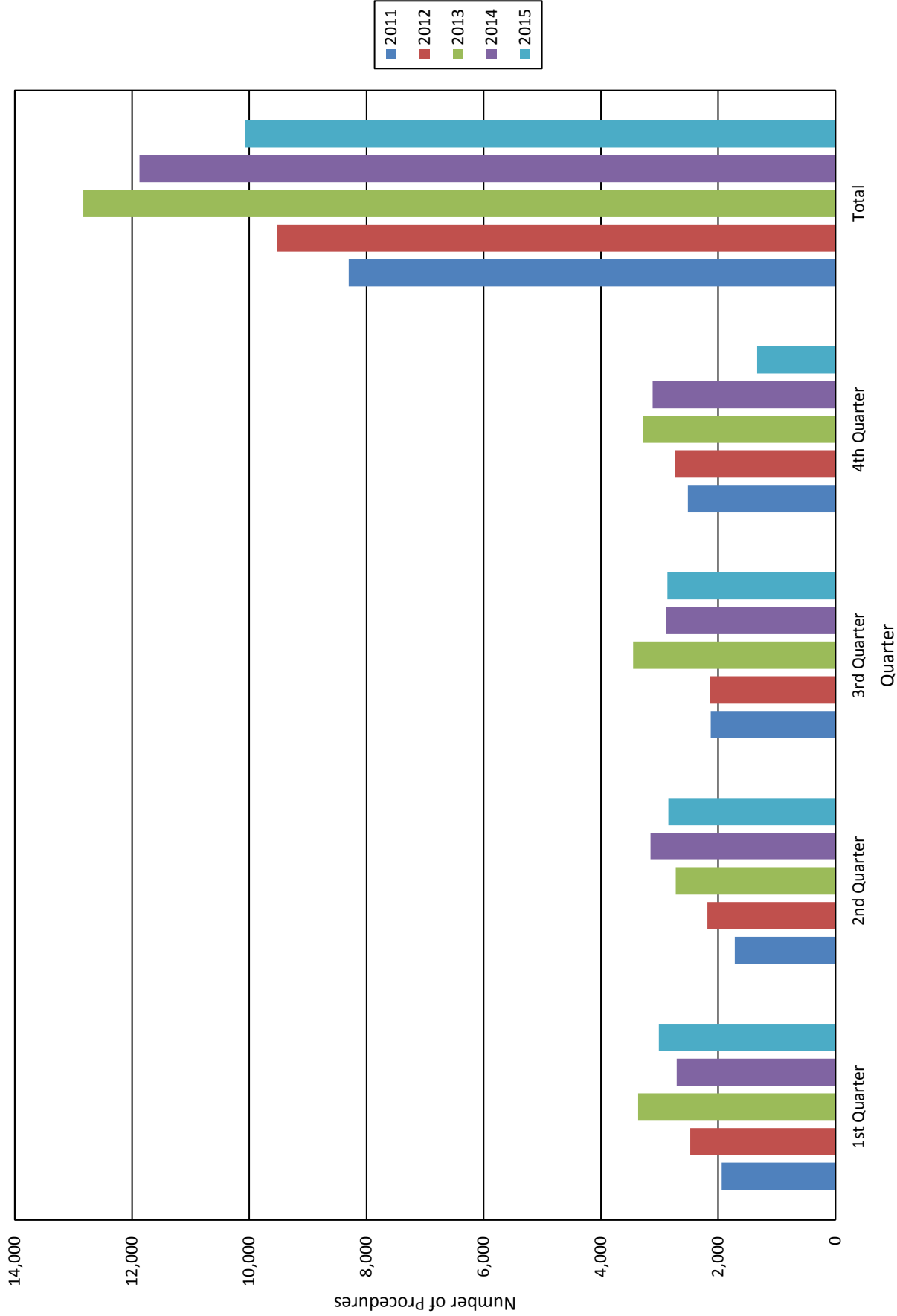


Figure 5. Animal Lovers "I Care" License Plate Sales Comparison 2011-2015

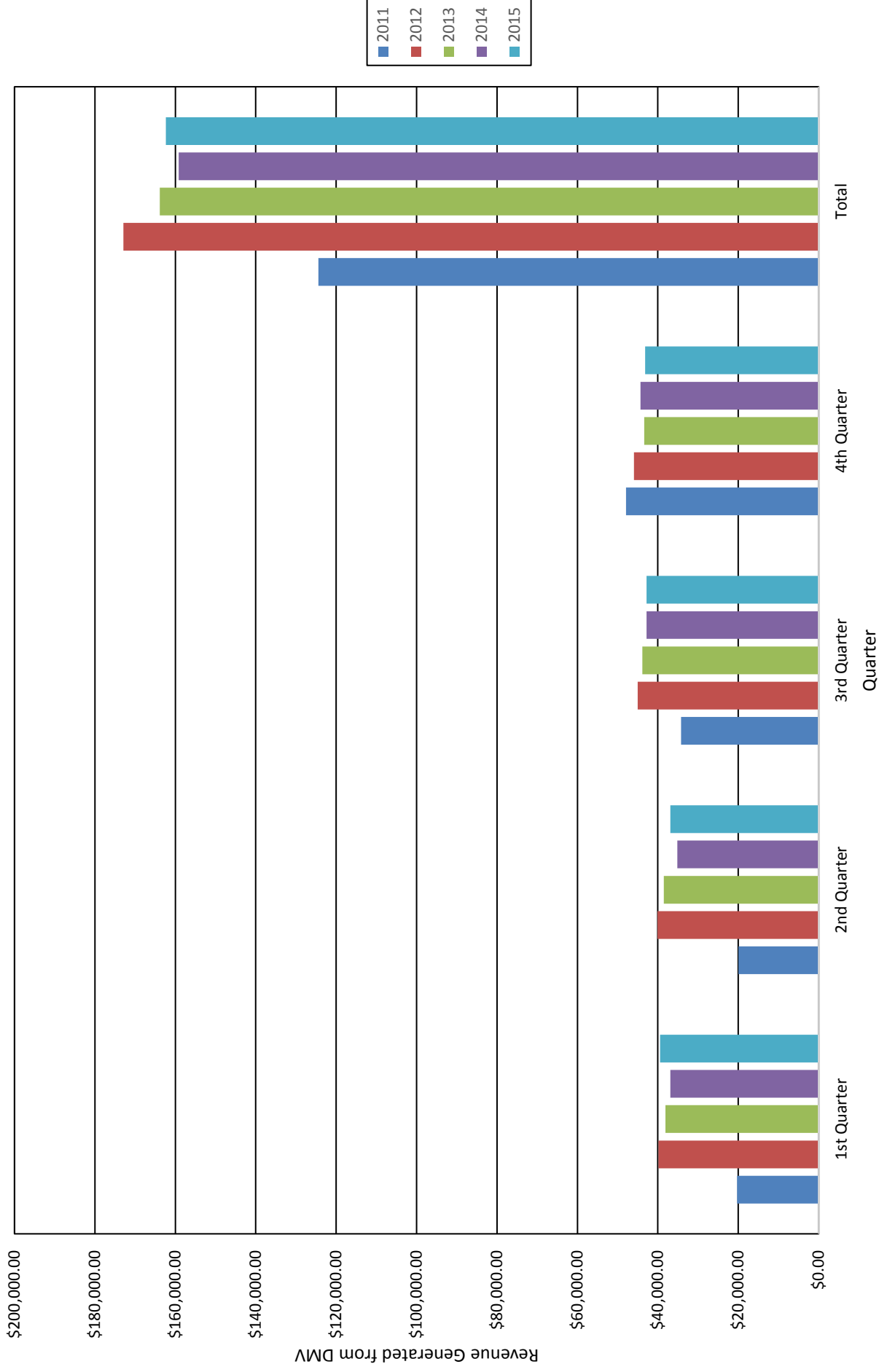


Figure 6. 2015 Spay/Neuter Reimbursements, Tier 1 Group

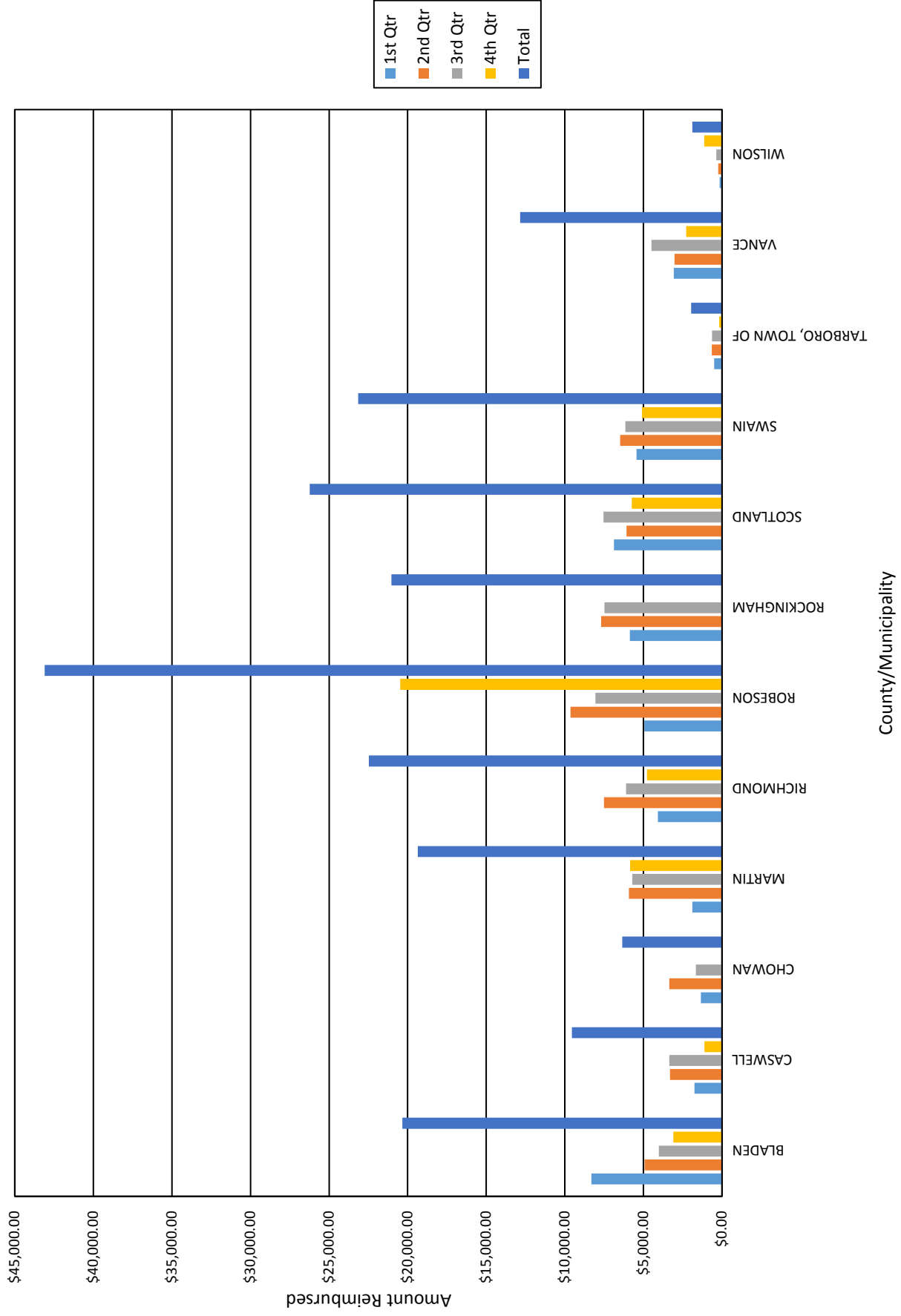


Figure 7. 2015 Spay/Neuter Reimbursements, Tiers 2/3 Group

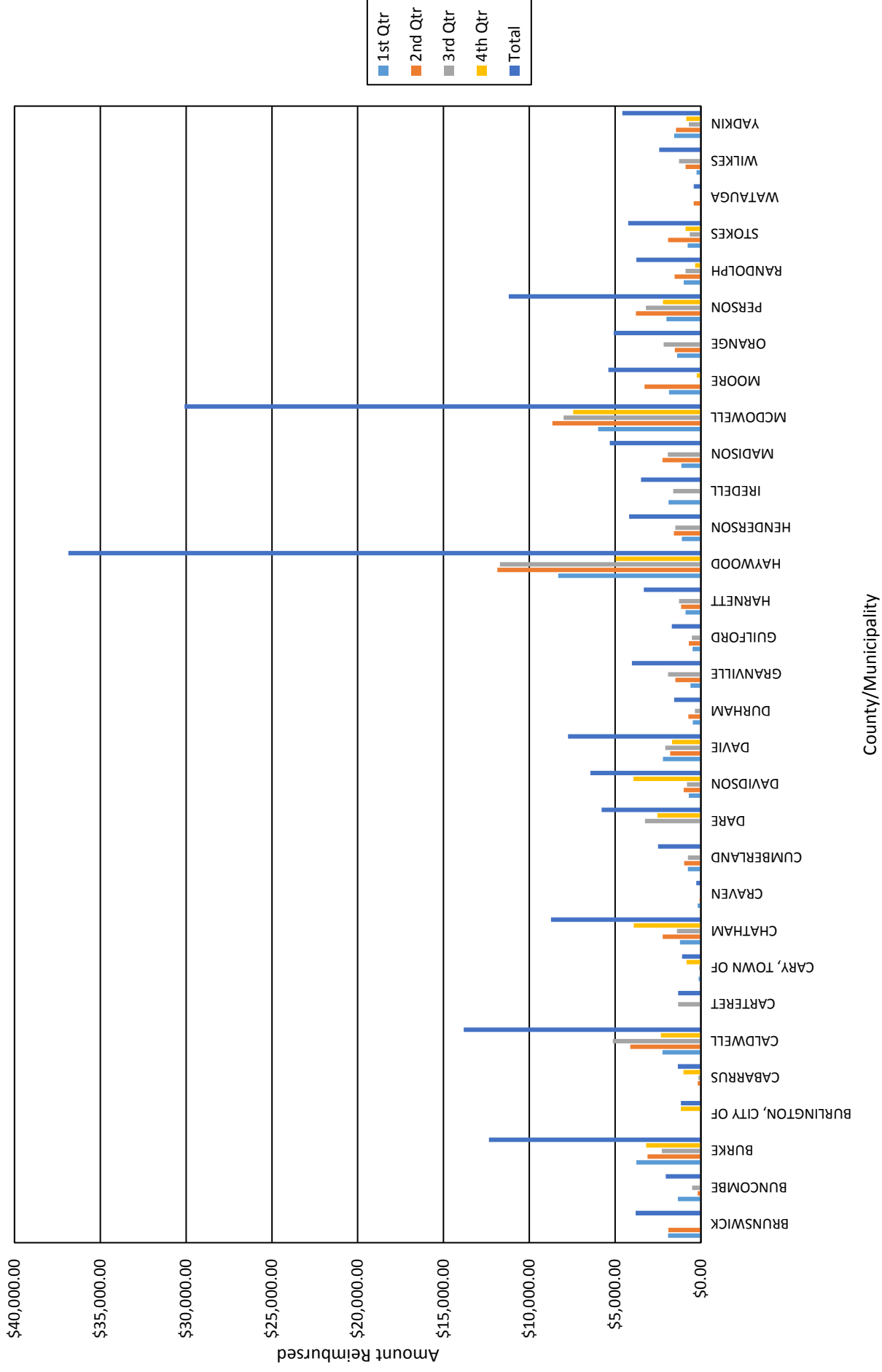


Figure 8. 2015 Total Reimbursements-All Entities

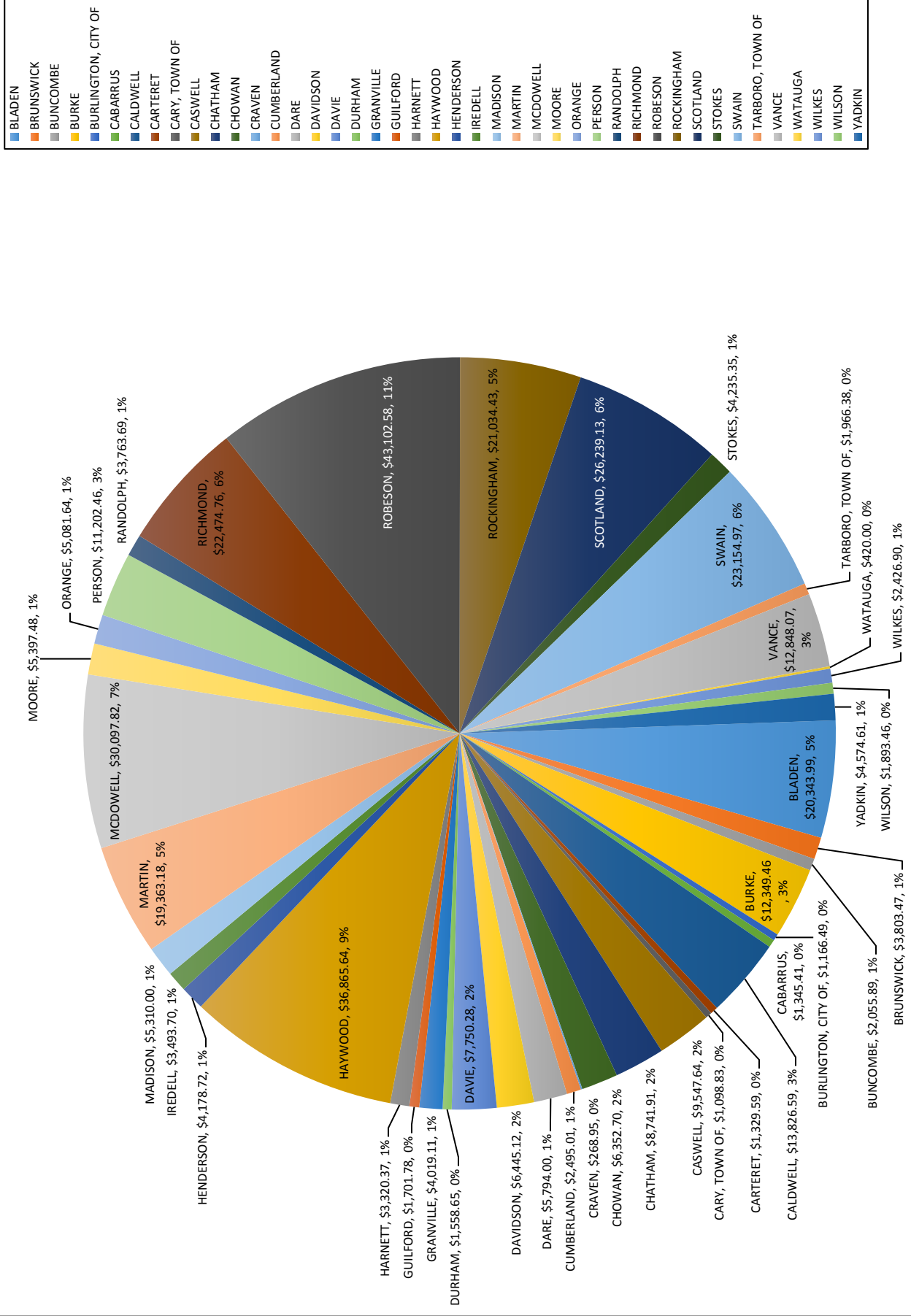


Figure 9. Quarterly Reimbursement Comparison 2011-2015

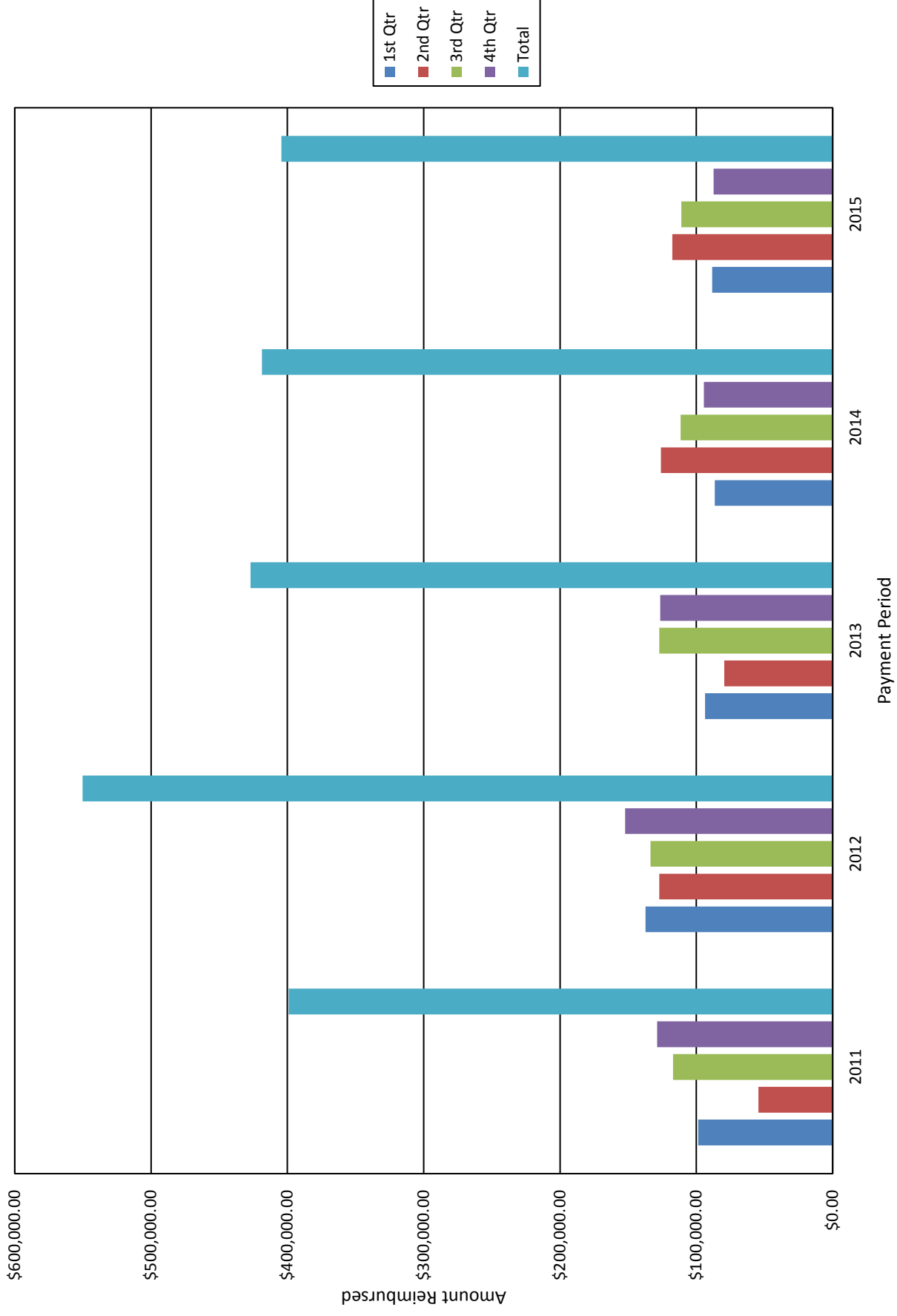




Figure 10. Amounts Reimbursed Compared to Amounts Requested 2011-2015

