



Thursday – Gov. Ops on Helene Recovery

January 30, 2025

**Governor
Stein has a
clear
vision to
drive Helene
recovery**

**We will make
communities
*safer...***

- North Carolina will ensure affected residents have secure, healthy places to live

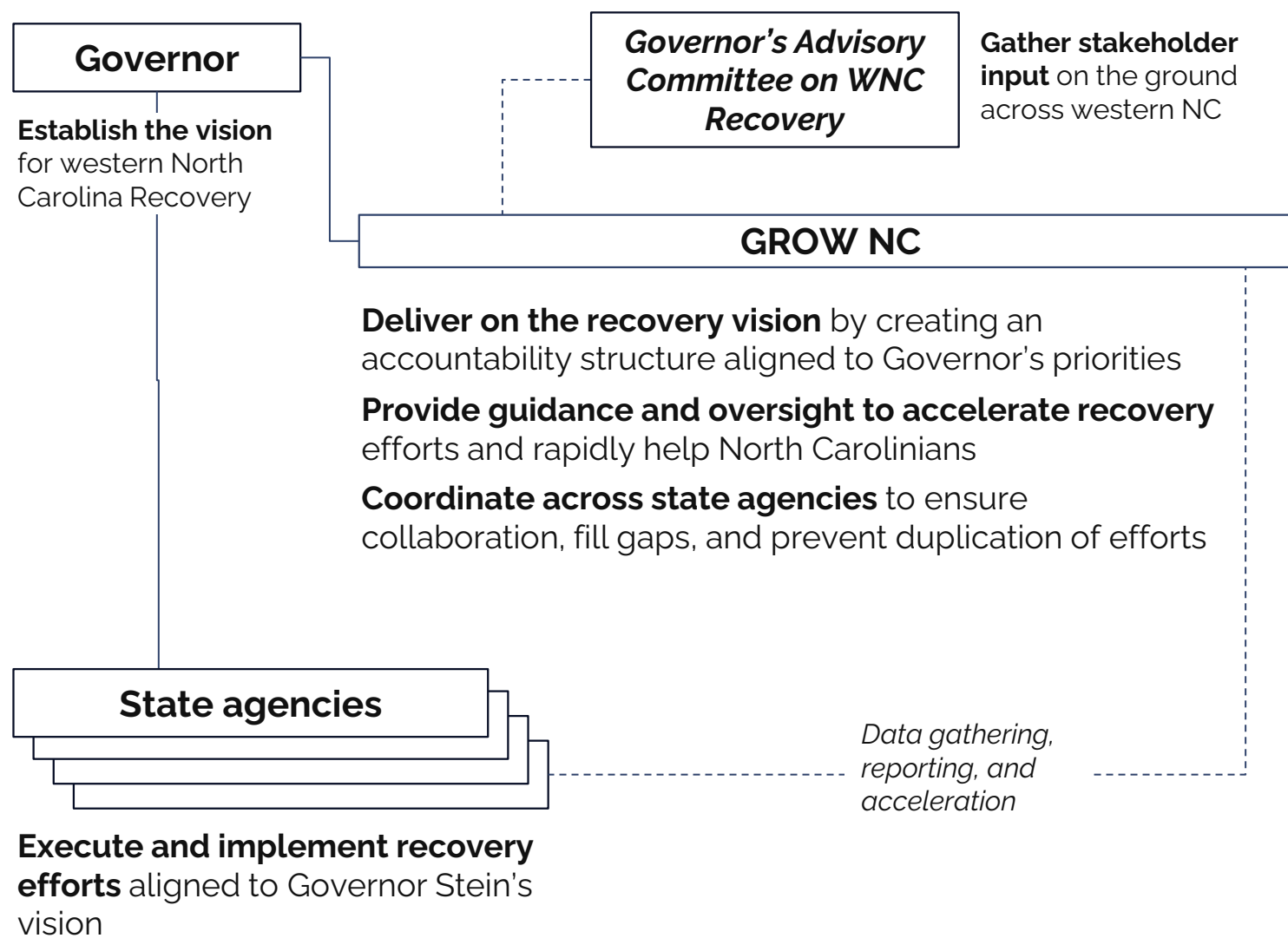
**...and *stronger* than
before...**

- The state will rebuild homes and infrastructure in a way that reduces damage in future disasters
- North Carolina will invest to revitalize businesses and spur new economic growth of key industries, helping communities grow, not just recover

**...through a
recovery that
helps North
Carolinians
*quickly.***

- The state will put the best interests of impacted residents first and reduce red tape in favor of rebuilding homes and reopening businesses quickly
- The state will work to streamline and simplify the assistance process

The Governor's Recovery Office of Western North Carolina (GROW NC) will deliver on this vision by accelerating and overseeing a unified effort



GROW NC's mission is...

...to... accelerate recovery in western North Carolina through home rebuilding, business revitalization, and infrastructure restoration

...by... securing and deploying federal, state, and philanthropic resources quickly, effectively, and transparently

...so... communities in western North Carolina can come back safer and stronger than ever before

GROW NC's functions are oriented to accelerate recovery and drive delivery

Community engagement

Engage to understand the needs of communities and maintain strong relationships

Operations

Drive and accelerate progress across agencies, provide expertise, promote collaboration

Communications

Communicate clearly and transparently with all stakeholders

Legal

Provide legal guidance on federal programs, regulatory policy, and compliance requirements

Finance & performance management

Oversee financial reporting and monitor KPIs to track progress

Data, compliance & reporting

Provide a single source of truth and establish clear data standards for accurate and consistent reporting