



NORTH CAROLINA
Department of Transportation



WNC STRONG

Helene Update

Mark Gibbs, PE

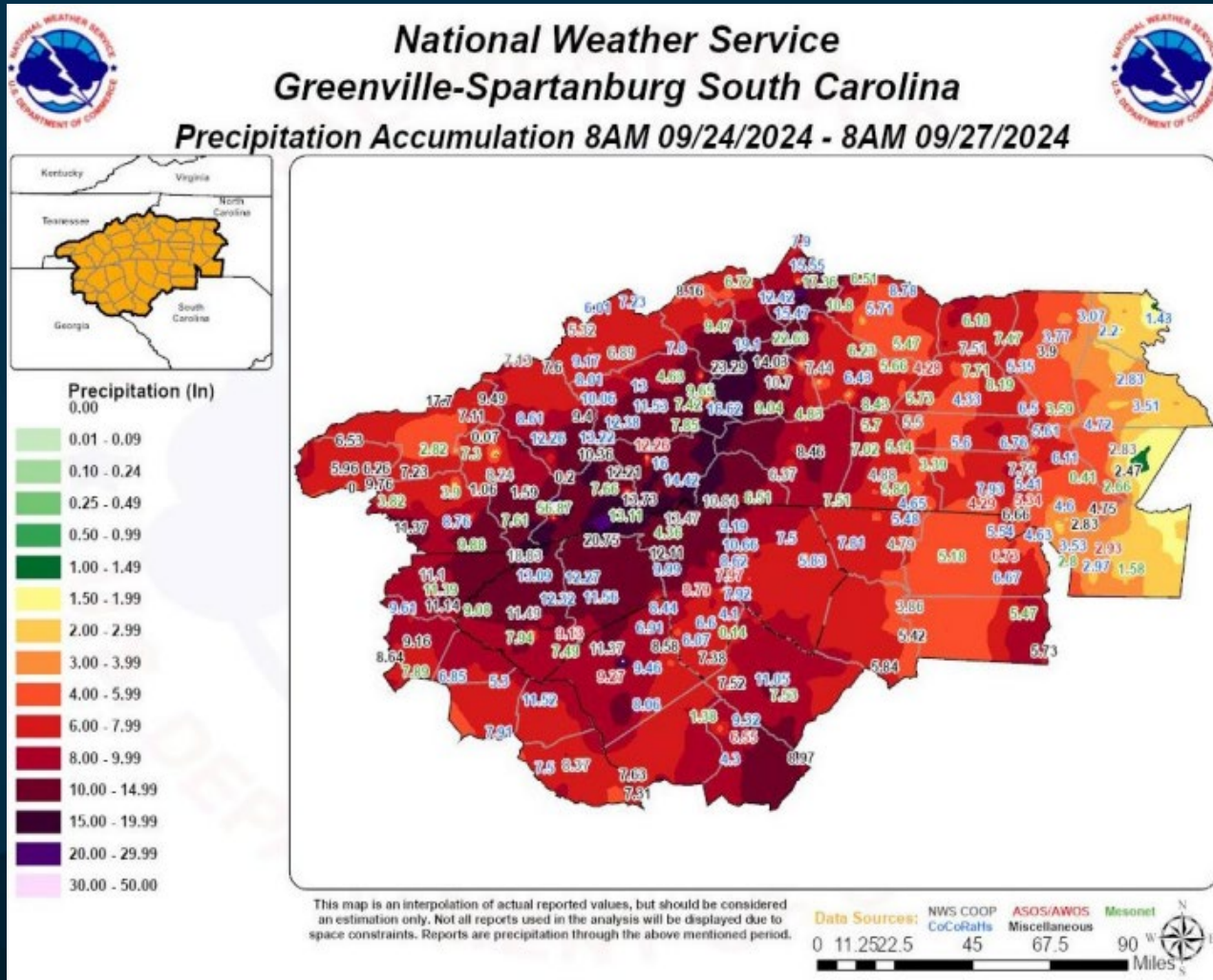
Western Deputy Chief Engineer

February 25, 2025



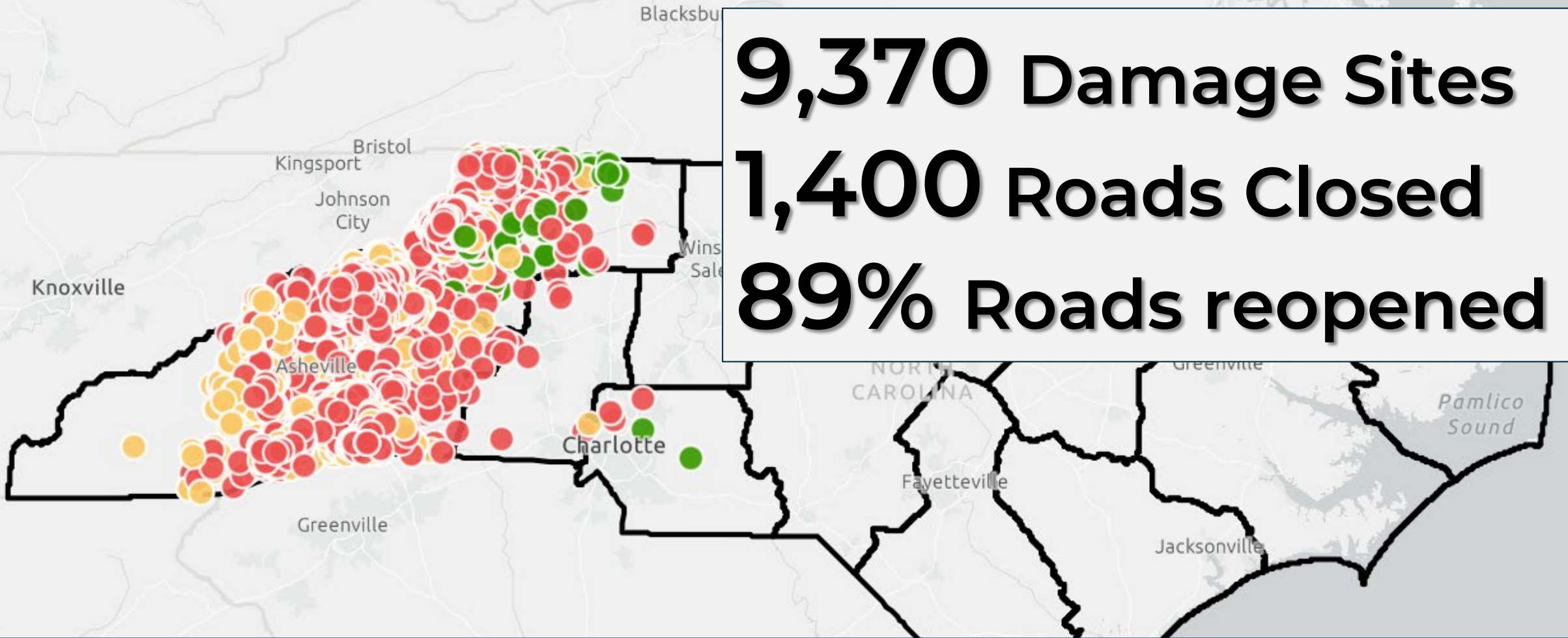
Connecting people, products and places safely and efficiently with customer focus, accountability and environmental sensitivity to enhance the economy and vitality of North Carolina

Rainfall Totals During Helene



City	County	Rain (in)
Busick	Yancey	29.58
Mt Mitchell St. Park	Yancey	24.2
Spruce Pine	Mitchell	18.23
Davidson River	Transylvania	17.7
Foscoe	Watauga	16.42
Old Fort	McDowell	15.6
Whitehead	Alleghany	15.59
Hendersonville	Henderson	15.11
Swannanoa	Buncombe	14.81
North Cove Pinnacle	McDowell	14.75
Guion Farm	Henderson	14.73
Saluda	Polk	14.58
Highlands	Macon	14.52
Grandfather	Watauga	14.47
Watauga Medical Center	Watauga	10.98
Boone Precip 2 S	Watauga	9.21

9,370 Damage Sites
1,400 Roads Closed
89% Roads reopened



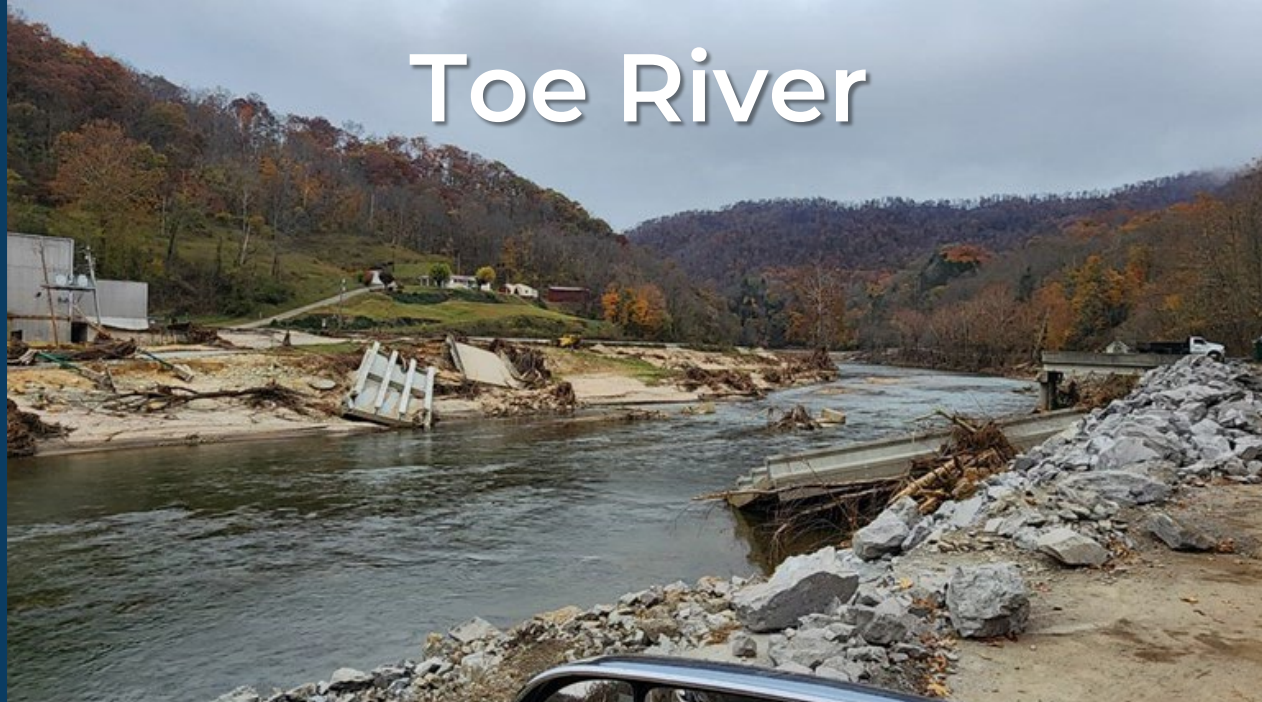
155 State-Maintained Roads remain closed

● 0 - 49% Complete

● 50-89% Complete

● >90% Complete

Toe River



US 19W



US 64/74



818 Bridges Damaged
213 Bridges complete
13 Permanently Replaced

Gap Creek Rd



884 Pipes Damaged
784 Pipes Completed
11% Remaining

Lower Brush Creek Rd



Garren Creek Rd



- **326 Contractor Firms**
- **61 Consultant Firms**
- **2000 NCDOT Employees**
(1.155M man-hours worked)
- **Kentucky Transportation Cabinet**
- **Florida DOT**
- **US Army**
- **NC National Guard**

NC 197

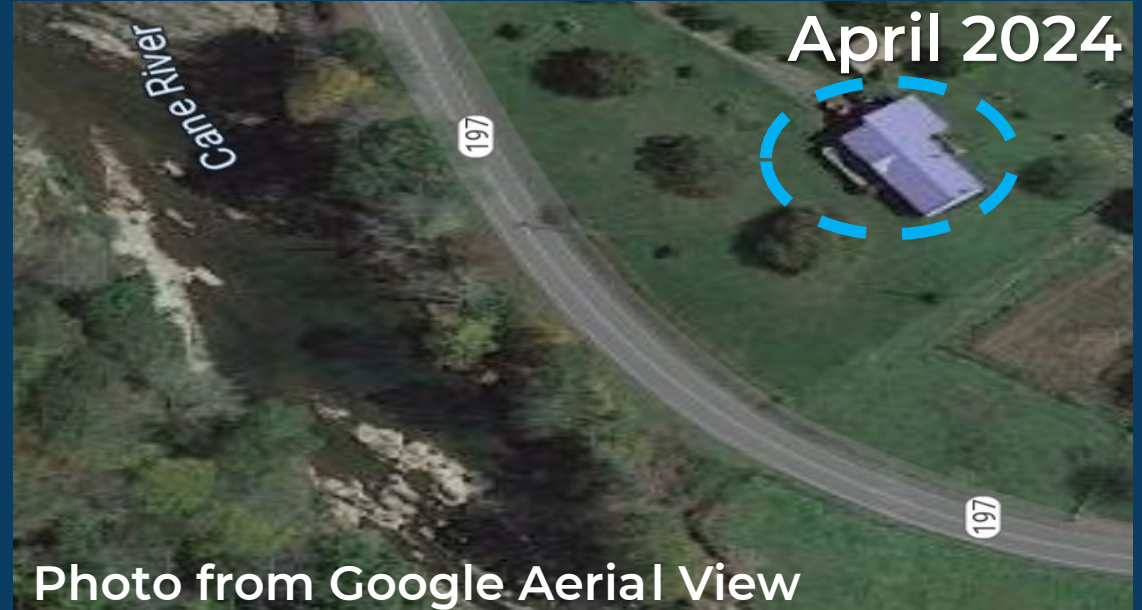


Photo from Google Aerial View



October 2, 2024

Fruitland Rd Henderson County



Filter Plant Rd Haywood County



US 276 S Transylvania County



US 64/US 74

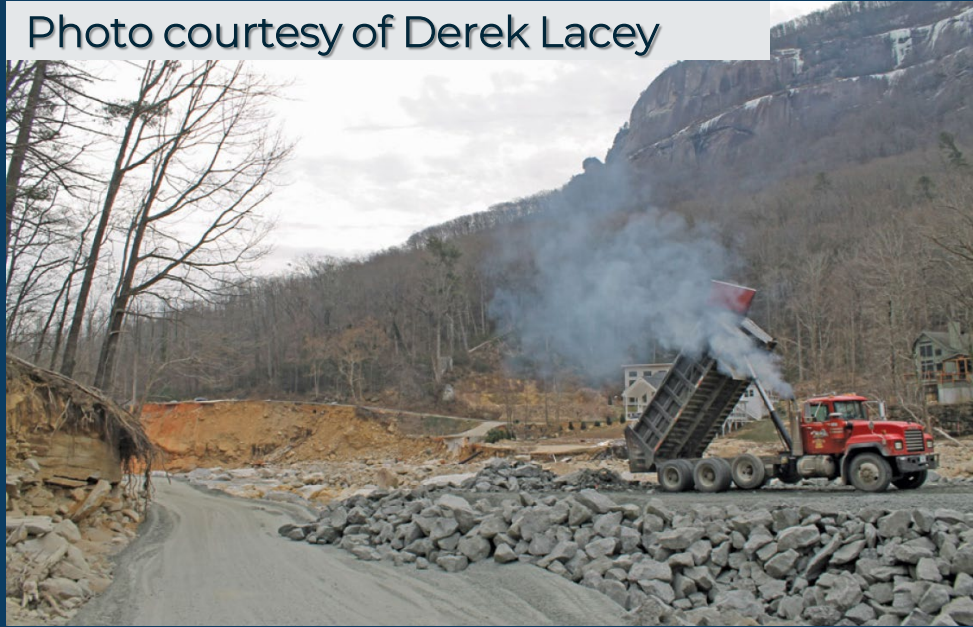


Photo courtesy of Derek Lacey

Major Corridors Damaged by Hurricane Helene

Route	County	Estimated Cost
I-40 Pigeon River Gorge	Haywood	\$1B
Toe/Nolichucky	Yancey	\$350M
US 19W North	Yancey	\$320M
US 64/74 Chimney Rock	Rutherford	\$290M
NC 197 Pensacola	Yancey	\$290M
US 19W South	Yancey	\$200M
US 74A	Henderson	\$128M
US 64	Henderson	\$37M
Total		\$2.615B



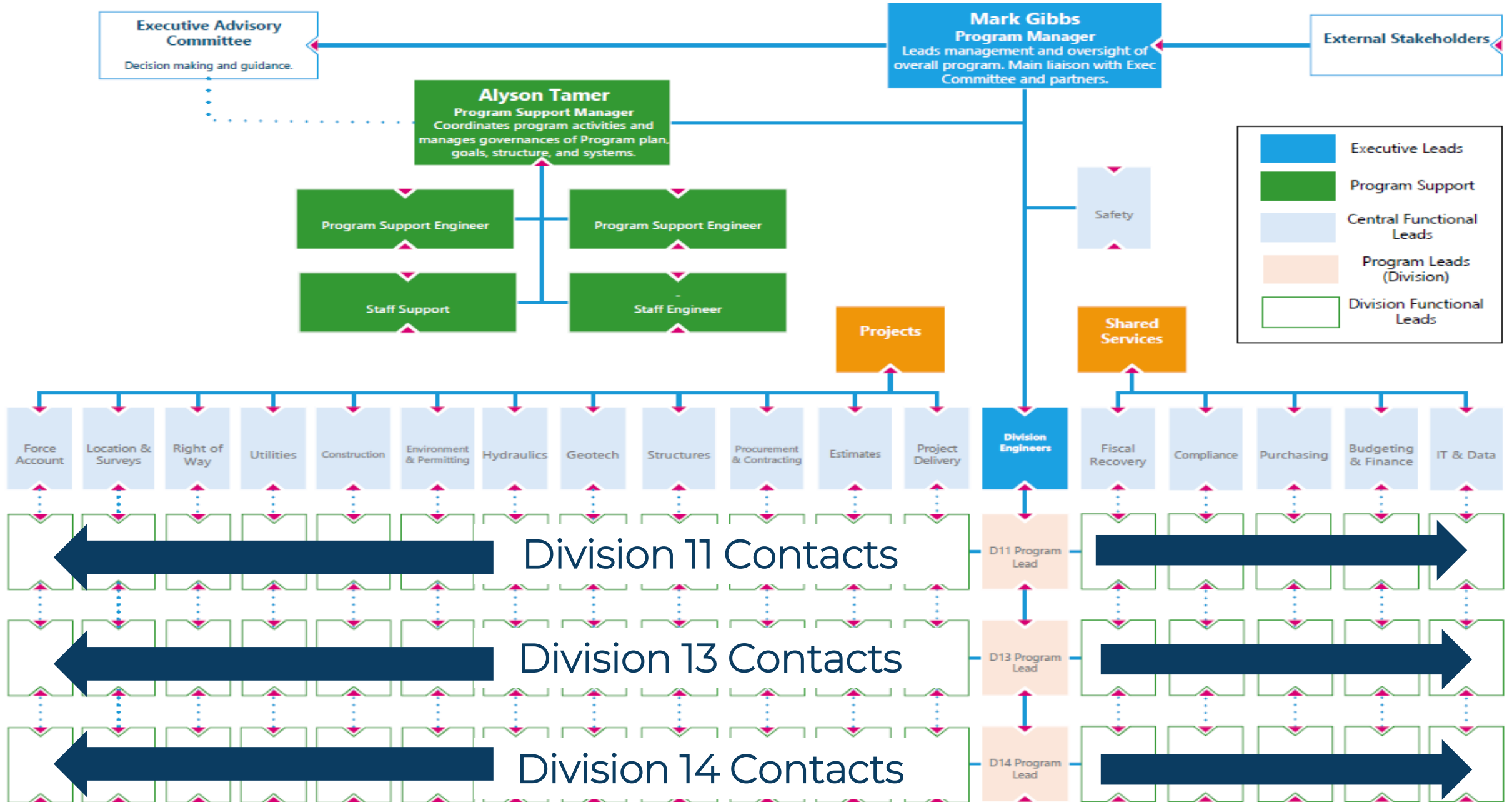
I-40 Pigeon River Gorge



Photo courtesy of Derek Lacey



Western NC Strategic Transportation Recovery Operations to meet Network Goals (WNC STRONG)



WNC STRONG - NCDOT Financial Stakeholder Dashboard

Clear all filters

Division: All

County: All

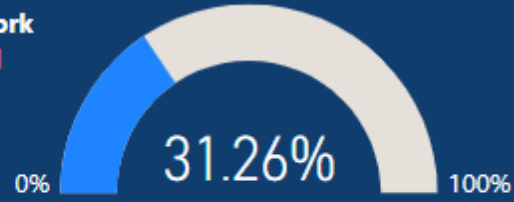
9370

Current Damage Sites

\$4.9bn

Projected Damage Sites Estimate

Percent of work completed



Damage Sites represent individual locations identified from the beginning of the Helene storm even though some NCDOT intervention to resolve. The resolution ranges from small immediate repairs to largely scale engineering needs. The percent work complete dial shows the percentage of all Hurricane Helene damage sites that have been fully addressed in the field.

6822

Total Rebuild Projects

\$4.14bn

Preliminary Estimate for Rebuild Projects

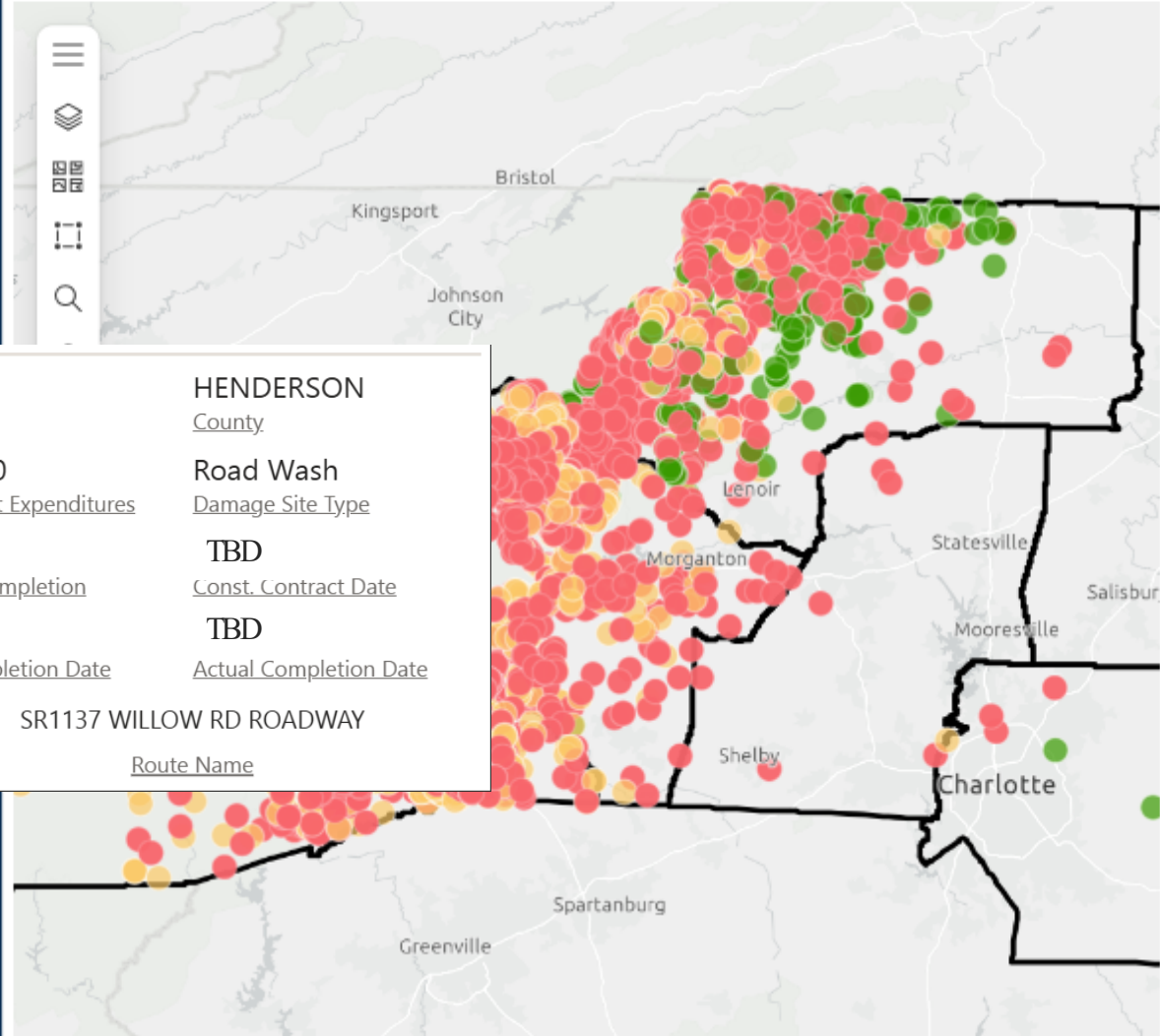
\$431.86M

Total Expenditures to Date

\$80.89M

Reimbursements to Date

Rebuild projects specific locations that require more extensive work to resolve and may also represent the combination of multiple damage sites that will be coordinated as a single rebuild project.



[View Road Closures & Reopenings Dashboard](#)

[View NCDOT Helene Major Corridor Projects Website](#)

● 0%-49% ● 50%-89% ● 90%+

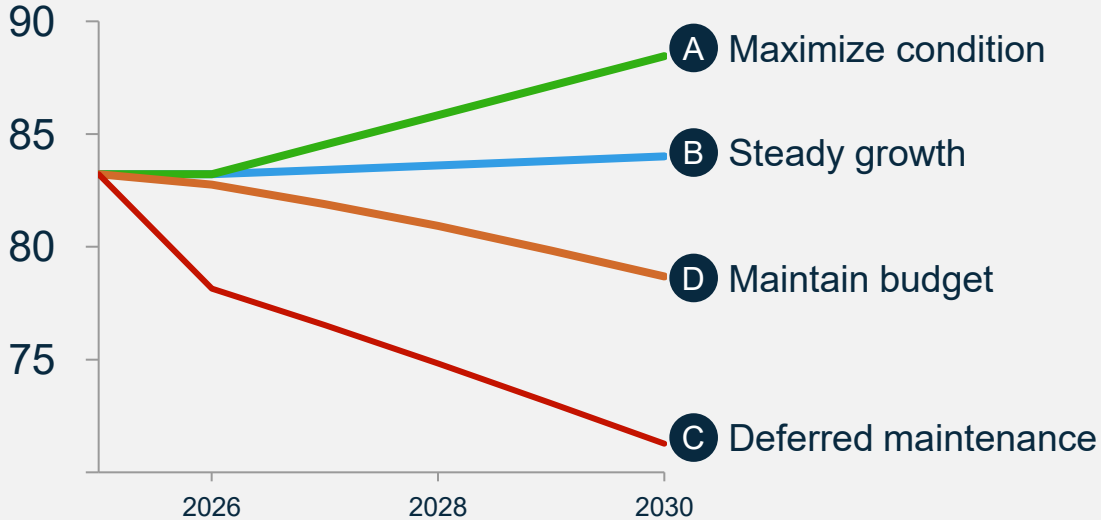
Quick Information: More information:

Esri, TomTom, Garmin, FAO, NOAA, USGS, EPA, NPS, USFWS | North Carolina Department of Information Technology | Powered by Esri

Deferred maintenance has potential to significantly impact level of service.

Redirecting \$~1.4B over the next five years from the Highway Fund (\$300m annually), leads to potential **-10 point drop in statewide route score**

State-wide Route Condition



Estimated impact from diverting ~\$300M annually over 5 years, with reductions of \$150M each in General Maintenance, Resurfacing and Pavement Preservation from 2023 levels, accounting for inflation, vehicle miles traveled (VMT) growth, and normal deterioration. Source: ArTEMIS Total Cost of Ownership model

Current Statewide Route Score: **83**



Example: US-70 in Wake County (score: 83.3)

Route Score in five years: **71**

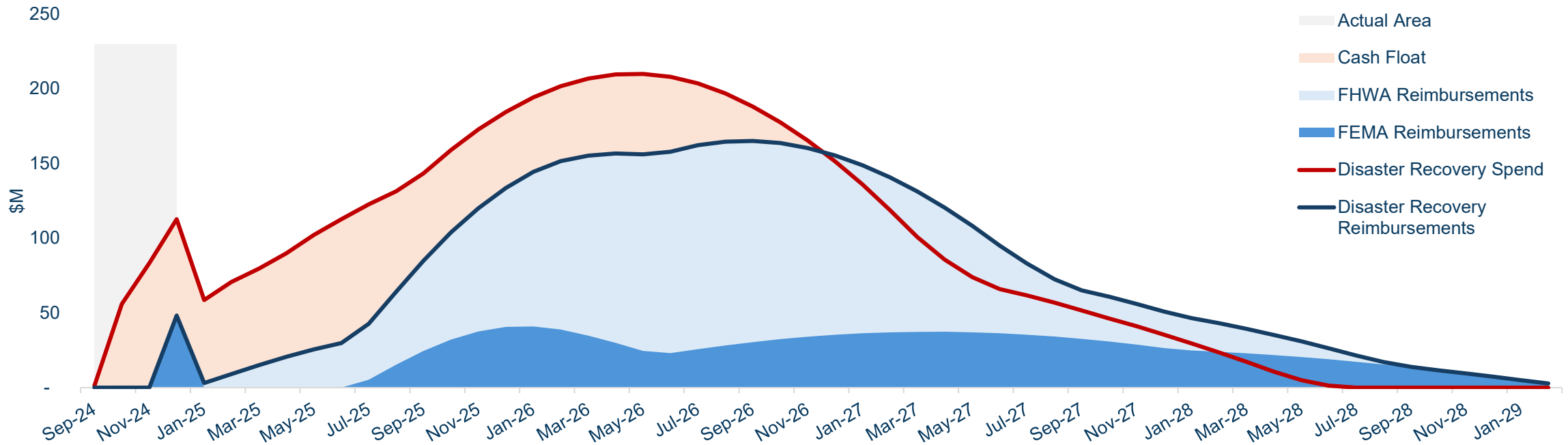


Example: NC-98 in Wake County (score: 70.7)

Helene Recovery Forecast – February 2025

Total Spend: \$4,953M
Federal Share: \$4,036M
FHWA: \$2,906M
FEMA: \$1,130M

State Share: \$917M
Max. Cash Float: \$1,403M
Max. Monthly Spend: \$210M



1. Actuals as at December 31, 2024

Hurricane Helene Recovery Financial Overview – February 21, 2025

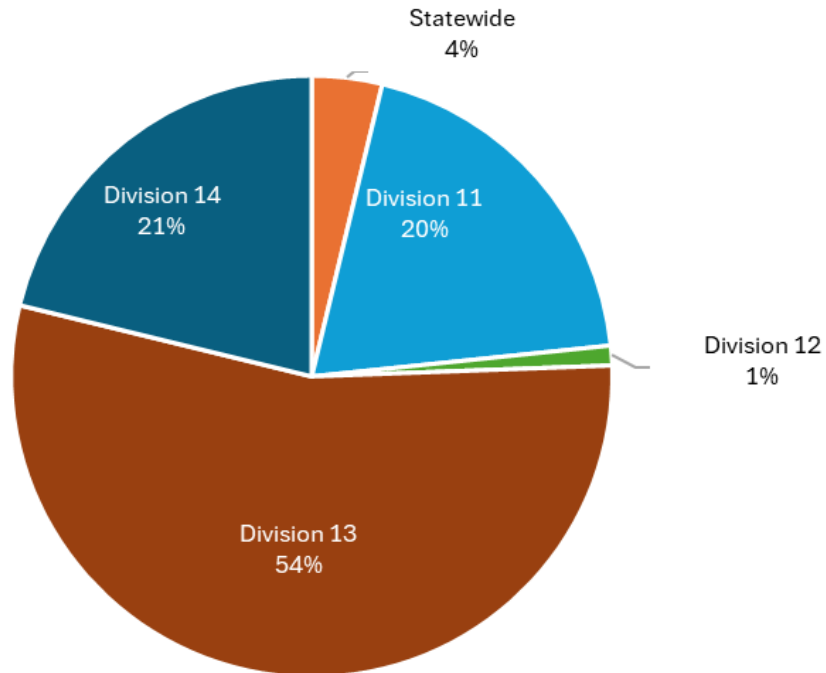
Spend to Date
\$432m

FEMA Receipts to Date
\$48m

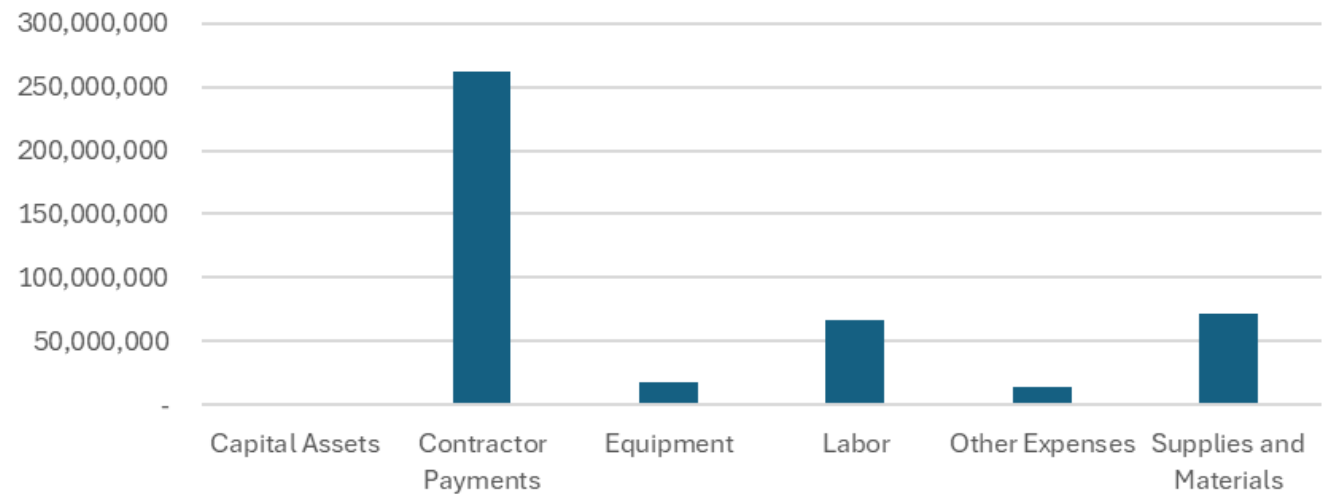
FHWA Receipts to Date
\$33m

Spend as % of Cost Estimate
8.5%

Cost by Division



Cost by Category





Mark Gibbs, PE – WNC STRONG Manager
Western Deputy Chief Engineer
mtgibbs1@ncdot.gov

Mark Newsome
NCDOT Chief Financial Officer
mnewsome2@ncdot.gov

Alyson Tamer, PE, CPM
WNC STRONG Program Support Manager
awtamer@ncdot.gov